



China's National Sea Level Network

**Report to the 18th Session of the Group of Experts for the Global
Sea Level Observing System**

Yuxi Jiang

National Marine Data and Information Service

March 12th, 2025

1. National SL Observing Network of China



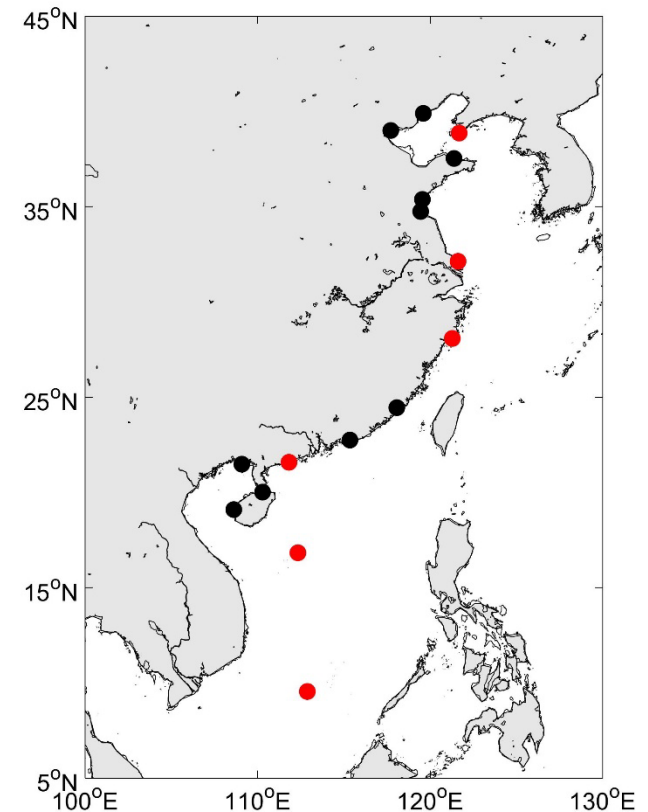
The national network of sea level observation in China is operated by National Marine Data and Information Service, Ministry of Natural Resources.

✚ **Seventeen key stations** and other basic stations along China's coast.

✚ **Six stations have been registered** in GLOSS Core Network and monthly MSL data are sent to PSMSL on time.

✚ Measure vertical land motion at most of the tide gauge locations (GNSS).

✚ Optimize the China sea level observing network

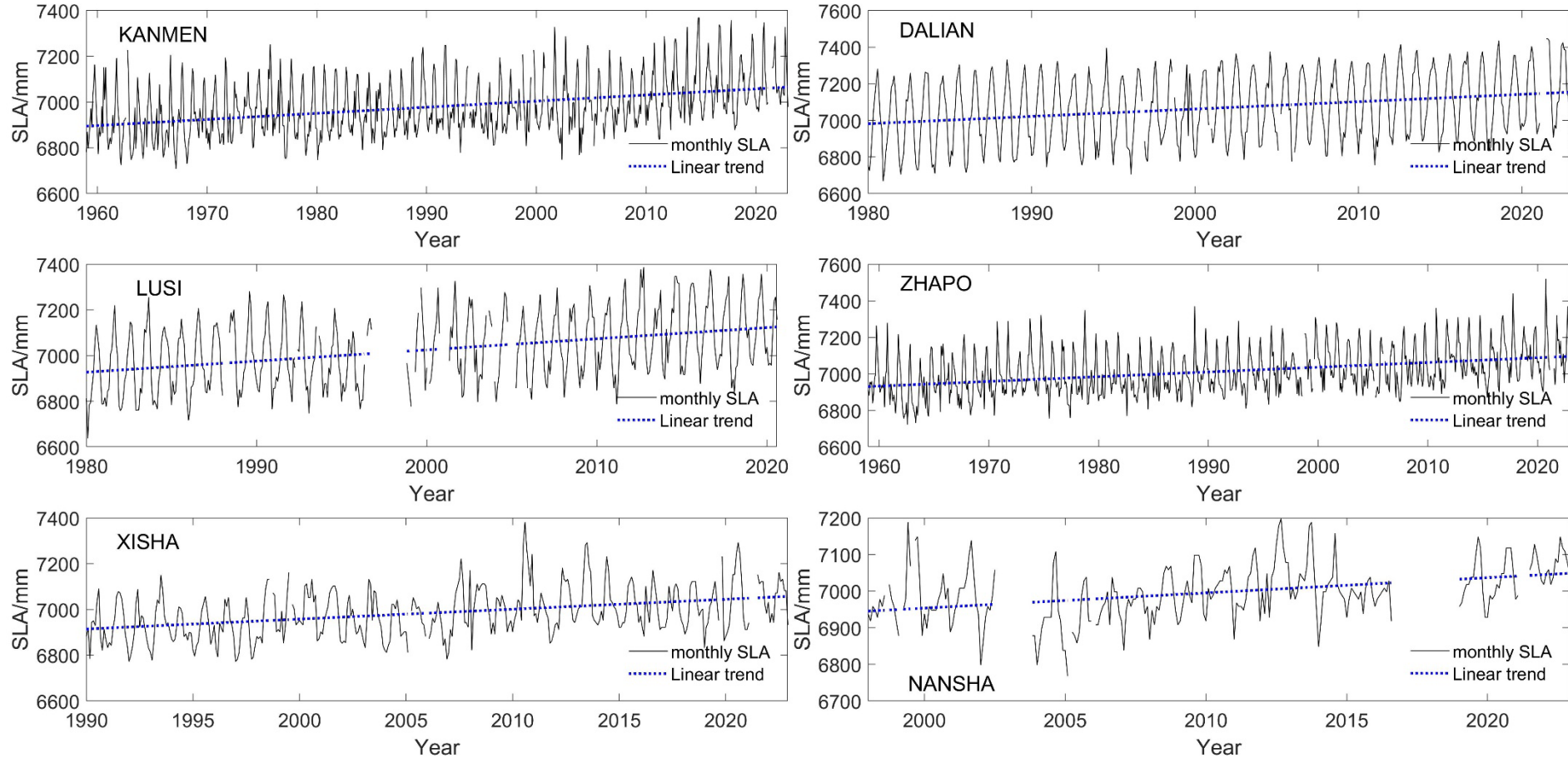




GLOSS Core Network Stations in China

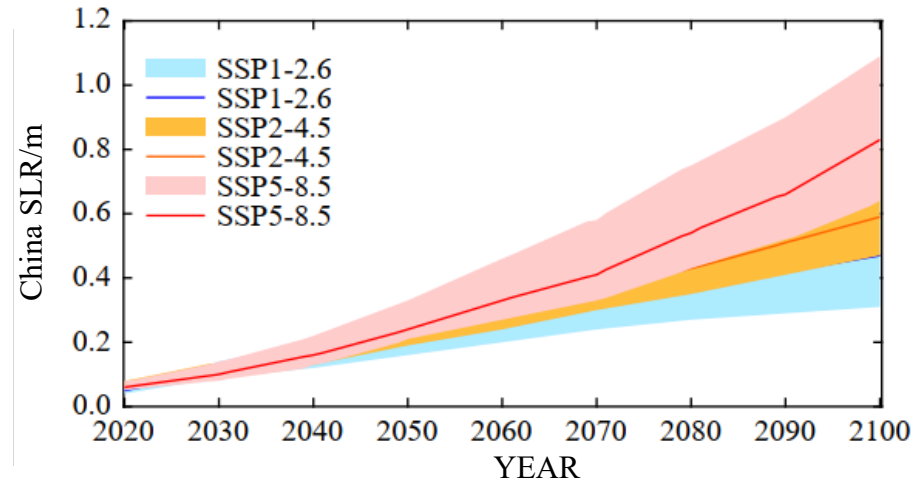
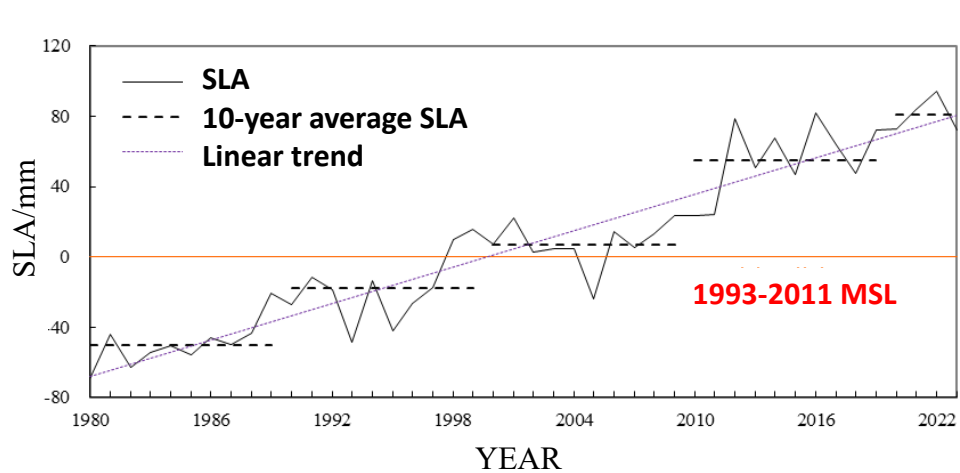
GLOSS ID	Station Name	Location	Status		
			Temporal Range	Hourly height data	Monthly MSL data
934	KANMEN	28°05'N 121°17'E	Jan 1959 till now	Jan 1975 to Dec 1999	Jan 1959 to Dec 2024
723 (1513)	DALIAN (LAOHUTAN)	38.867°N 121.683°E	Jan 1954 till now	Jan 1980 to Dec 1999	Jan 1954 to Dec 2024
979	LUSI	32°08'N 121°37'E	Oct 1959 till now	Jan 1975 to Dec 1999	Jan 1961 to Dec 2024
933	ZHAPO	21°35'N 111°50'E	Jan 1959 till now	Jan 1975 to Dec 1999	Jan 1959 to Dec 2024
1745	XISHA	16°50'N 112°20'E	Jan 1990 till now	-	Jan 1990 to Dec 2024
1730	NANSHA	9°33'N 112°53'E	Jan 1990 till now	-	Jan 1998 to Dec 2024

GLOSS Core Network Stations in China



2. Sea Level Change and Projection

- The sea-level rise along the China's coast is accelerating, with the rate increasing from 3.5 mm/yr during 1980-2023 to 4.0 mm/yr during 1993-2023.



Year	China SLR/m		
	SSP1-2.6	SSP2-4.5	SSP5-8.5
2050	0.21 [0.16-0.26]	0.22 [0.19-0.28]	0.24 [0.21-0.33]
2100	0.47 [0.31-0.64]	0.59 [0.47-0.80]	0.83 [0.64-1.09]

NOTE: Relative to 1995-2014

International Cooperation



- ✦ Participate in international cooperation in marine fields;
 - ✦ **GLOSS**, JCOMM, IODE, DBCP, NEARGOOS, ODINWESTPAC, CMOC-CHINA etc.
 - ✦ Implement EMOD-PACE&CEMDnet joint projects, collaborate with EMODnet and release *Regional Assessment of Coastal Hazards Connected to Sea Level Rise*.
 - ✦ OTGA (OceanTeacher Global Academy) Training Center.
 - ✦ Update China's coastal observation data and other data processed by NMDIS. The website linkage: <http://near-goos.coi.gov.cn>, <http://www.odinwestpac.org.cn> and <http://www.cmoc-china.cn>.



Thanks for listening!

Hui Wang, E-mail: wh_cherry@126.com

Wenshan Li, E-mail: liwenshan@nmdis.org.cn