

# THE OCEAN BIODIVERSITY DATA YOU CAN TRUST.



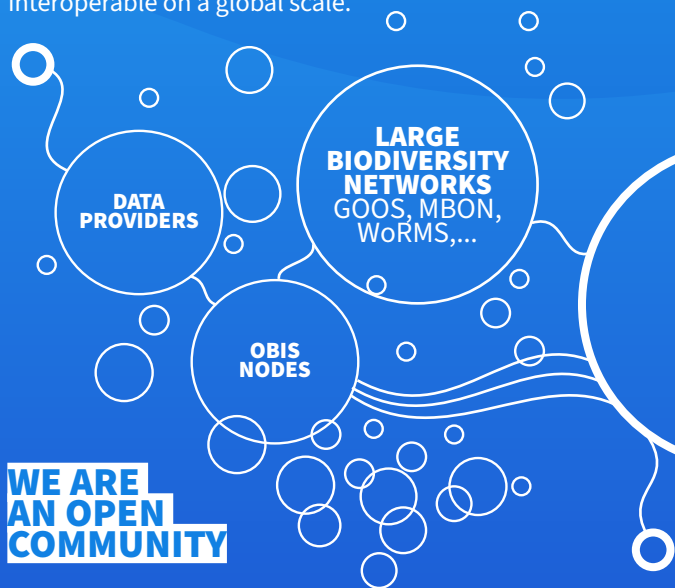
**unesco**

Intergovernmental  
Oceanographic  
Commission

UNESCO-IOC's Ocean Biodiversity Information System (OBIS) is a global platform that harnesses ocean biodiversity data to support science, conservation, and decision-making. OBIS connects a worldwide network of researchers and organizations to collect, standardize, and share marine biodiversity data. Our mission is to make this invaluable information accessible to everyone — from scientists and educators to policymakers and the public — empowering informed decisions about the future of our oceans.

## WE ARE CONNECTED

OBIS partners with major global biodiversity and ocean observation networks, coordinated under GOOS and MBON, and collaborates with TDWG and GBIF to ensure that biodiversity data is standardized, accessible, and interoperable on a global scale.



## WE ARE AN OPEN COMMUNITY

OBIS fosters an open community of researchers, organisations, and citizen scientists working together to integrate and share quality-controlled, standardised marine biodiversity data. By promoting collaboration and transparency, OBIS invites everyone to contribute to our collective knowledge and drive meaningful change for our oceans. Join us!

## WE INCREASE SCIENTIFIC CAPACITY

OBIS enhances open science capacity by applying the FAIR principles (Findable, Accessible, Interoperable, and Reusable) to standardize marine biodiversity data. This approach improves data sharing and strengthens global collaboration across institutions, building a broader knowledge base that enables more accurate biodiversity assessments and informed decision-making.

IMPACT, RISK ANALYSIS & ASSESSMENT  
SUPPORT FOR POLICYMAKING

KNOWLEDGE SHARING & COMMUNITY ENGAGEMENT

TRANSPARENCY & OPEN ACCESS

DATA STANDARDIZATION & INTEGRATION

## WE GENERATE INFORMATION FOR DECISION MAKING

OBIS empowers policymakers by providing the data needed to make informed, science-based decisions. By contributing reliable, standardized information, OBIS helps assess ongoing mitigation and conservation strategies, supports science-based projections to anticipate future challenges, and explores potential solutions. This data is critical for biodiversity assessments, helping countries and regions meet their conservation targets and international commitments.

## Support services



**Cutting-edge technologies**  
eDNA, Bioinformatics pipeline, Sampling protocols, ASV repository, DNA sequence search.



**Data access**  
Data portal, API, Mapper, R/Python packages, Parquet exports.



**Training**  
Helpdesk, Training courses, Manuals, videos



**Tools**  
Quality control, Data management, Data and metadata publication tools, Interactive products, Dissemination tools (CKAN), Data Visualization, Decision support, Data analysis platform (JupyterHub).



**Integration**  
**Ecosystem Information** (Environmental and climate variables, Biogenic habitat maps), **Area Information** (Reports on monitoring, gap analysis and sampling effort, human activities, climate risks).



**Biodiversity information**  
**Species Traits** (IUCN red list, migratory, CITES), **Species Observation** (Occurrence, abundance, biomass, behaviour).



**Modeled data**  
**Distribution Models** (Distribution ranges, shift projections and climate vulnerability), **Risk Analyses** (Early-detection and early-warning, habitat suitability and risk model), **Indicators** (Biodiversity information on protected areas, indicators and trends within special areas).



obis.org