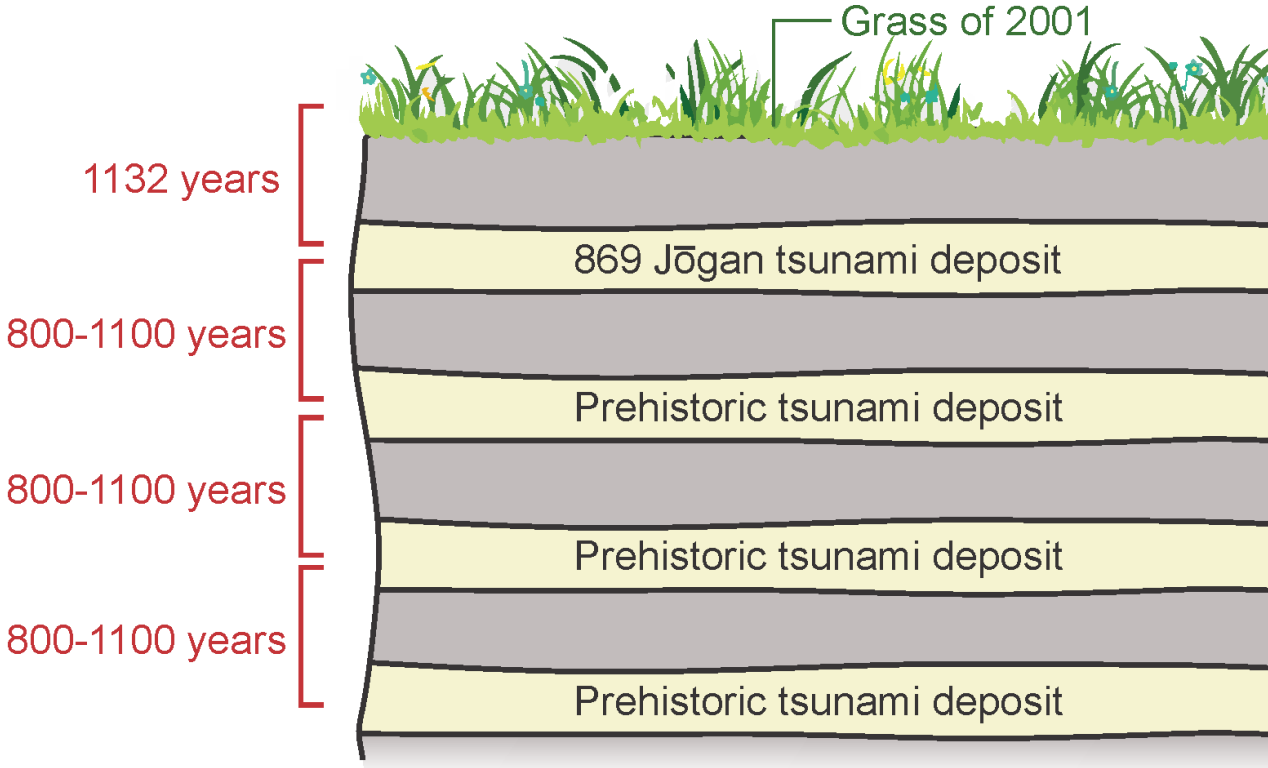
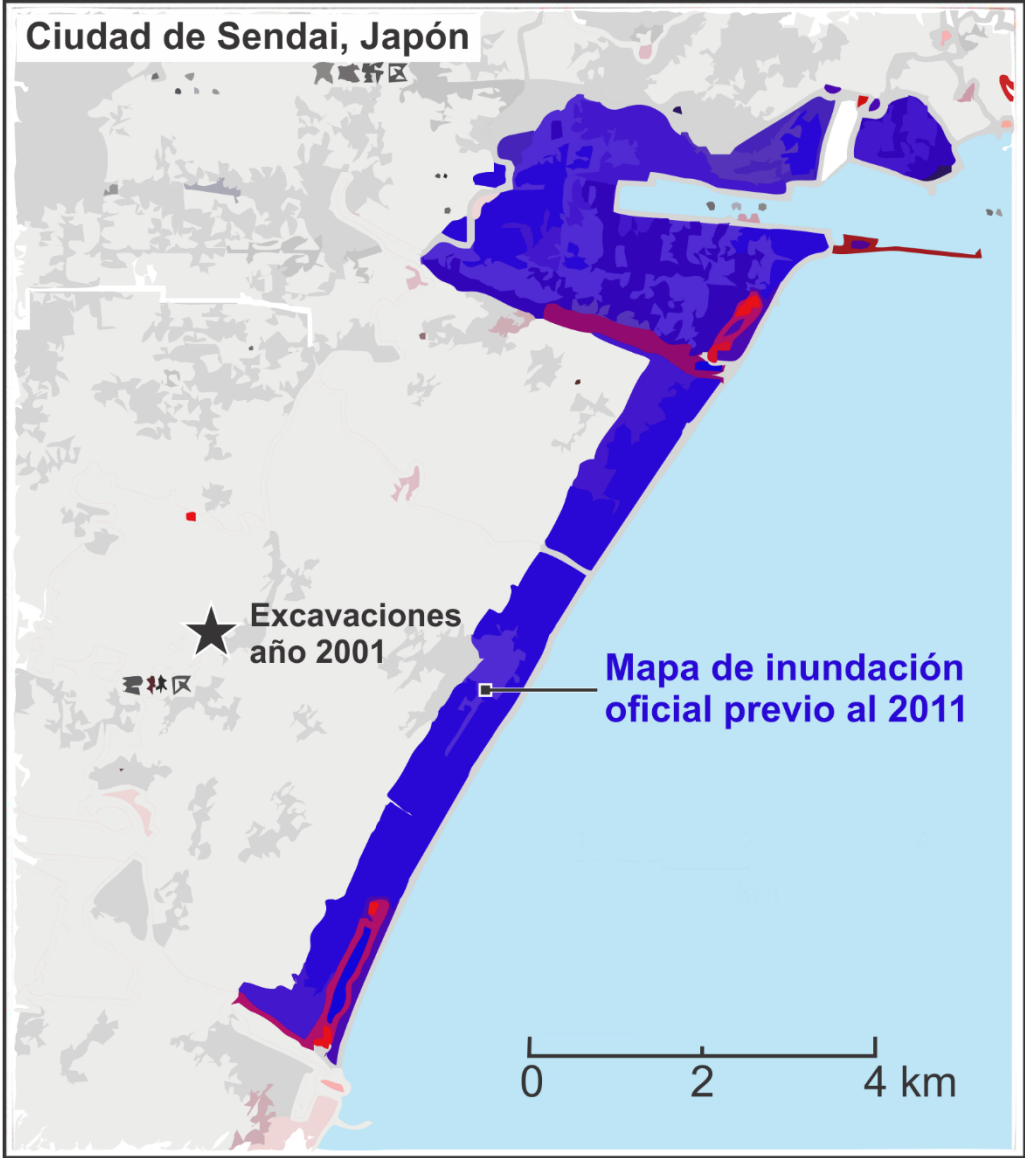
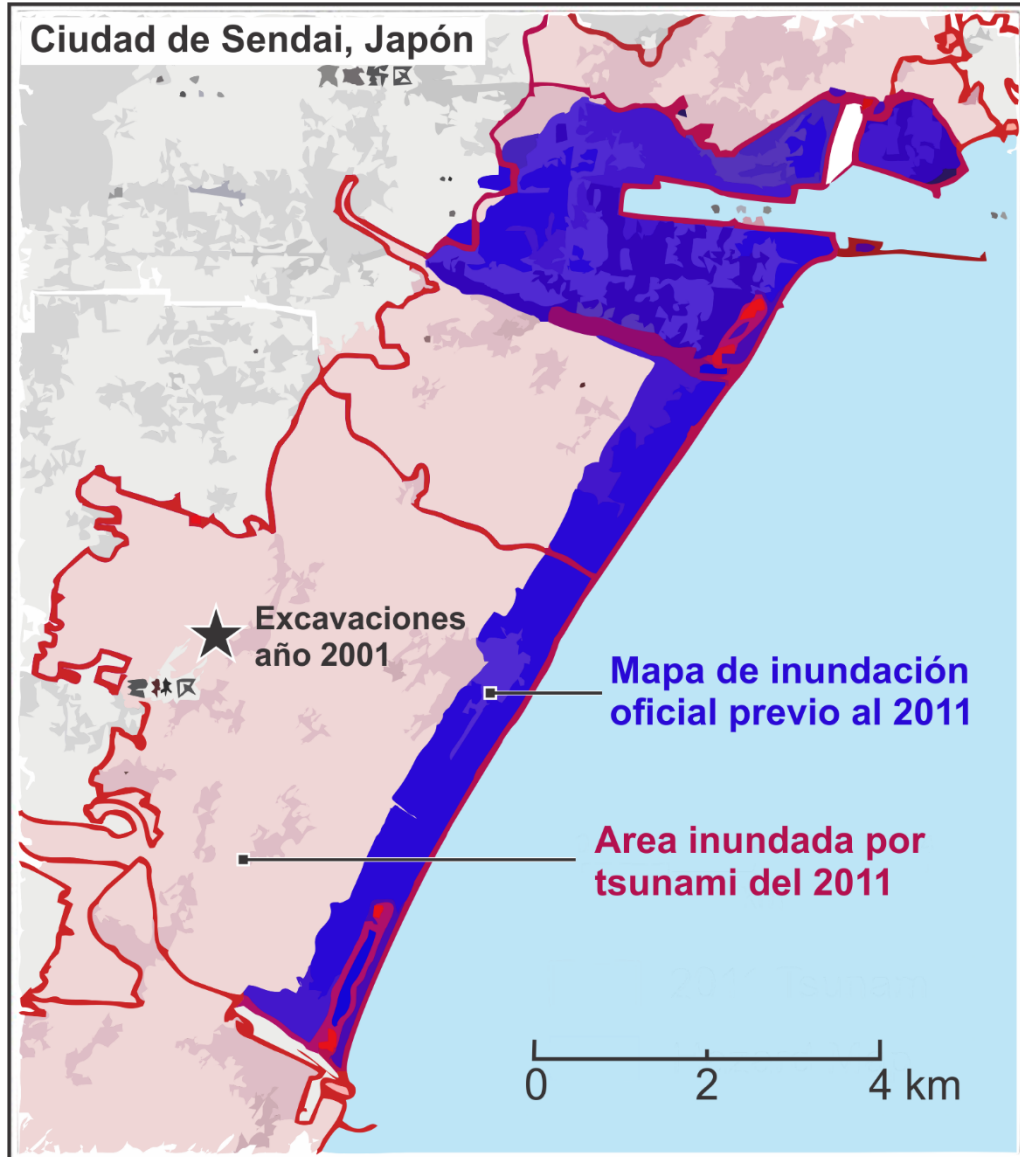


# A Japanese warning we cannot ignore



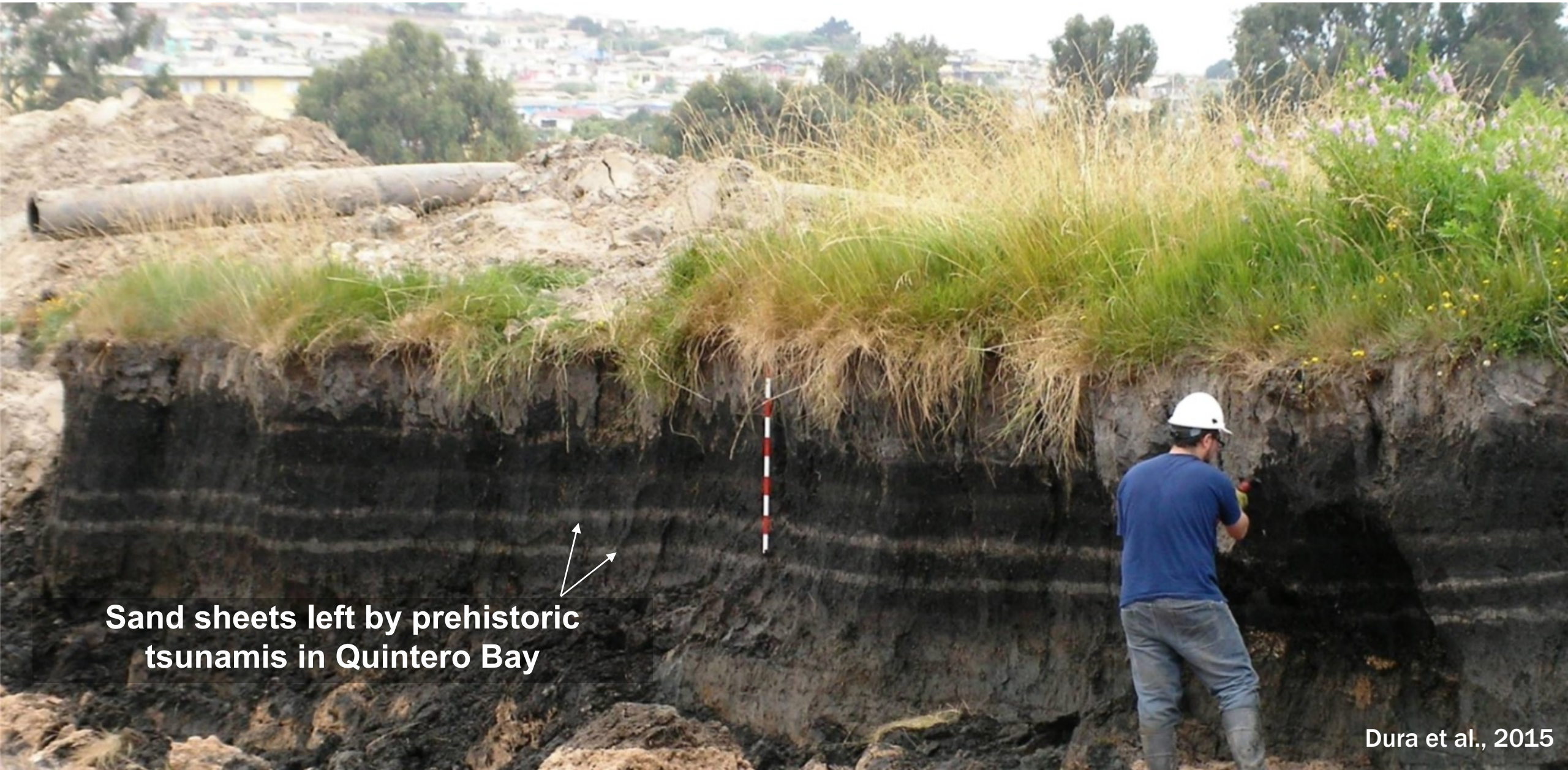
*Geological excavations in 2001 warned that:  
“Because more than 1100 years have passed since the Jōgan Tsunami, the possibility of a large tsunami running 3 km inland the Sendai Plain is high”*

# A Japanese warning we cannot ignore



The 2011 tsunami entering Sendai...  
At this location, it ran 5 km inland

# Prehistoric tsunamis inundated the coast of central Chile every 2-6 centuries

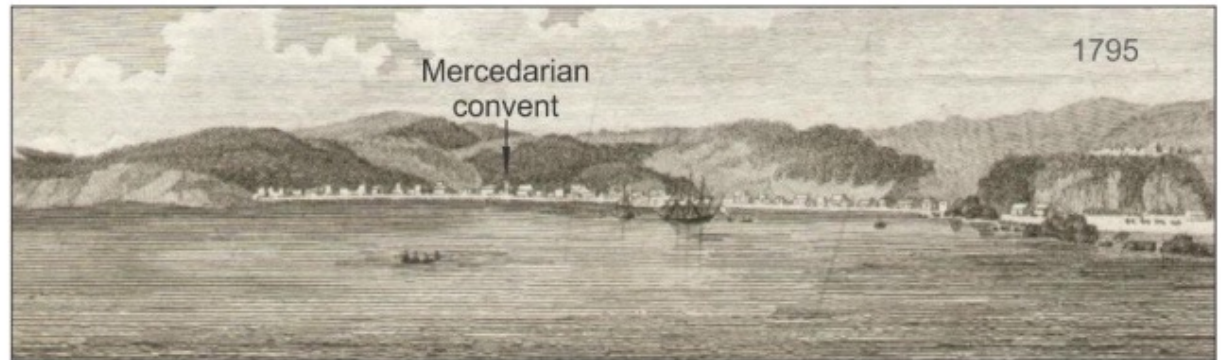
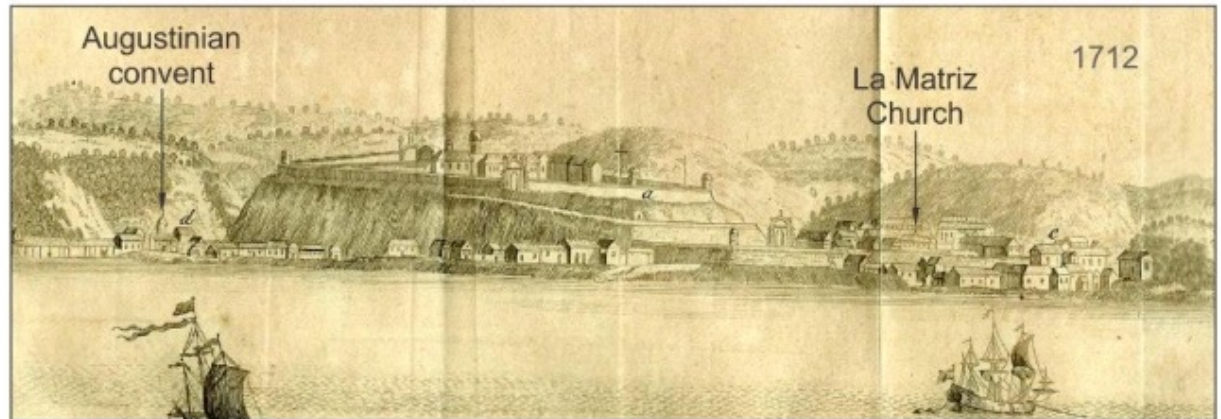
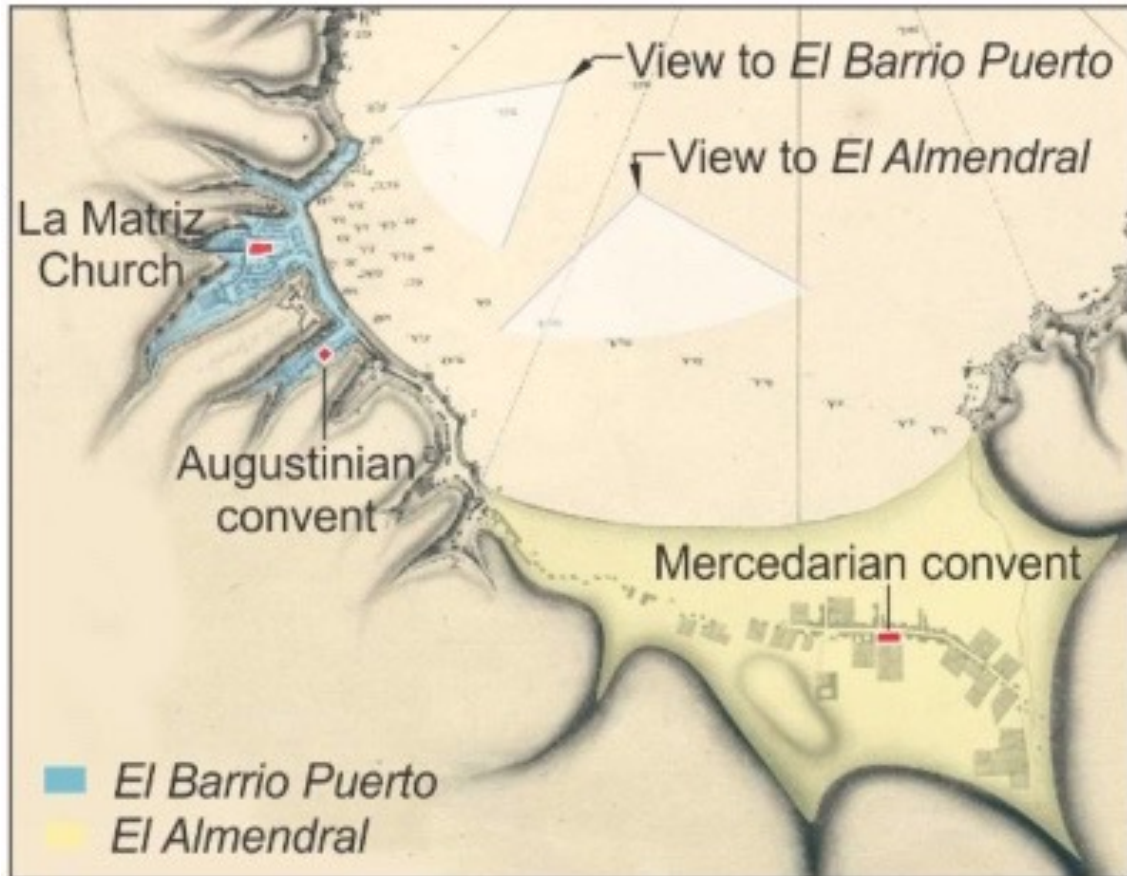


**Sand sheets left by prehistoric tsunamis in Quintero Bay**

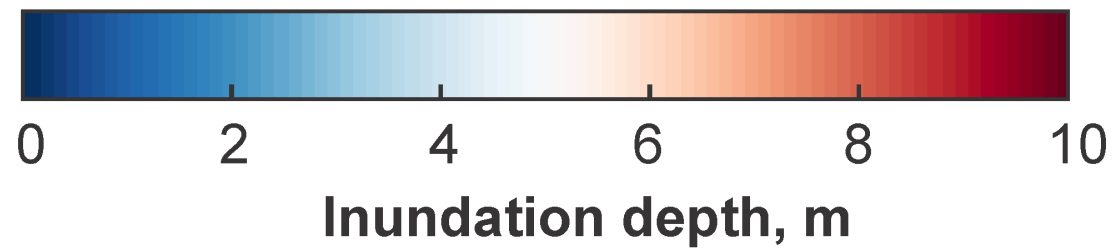
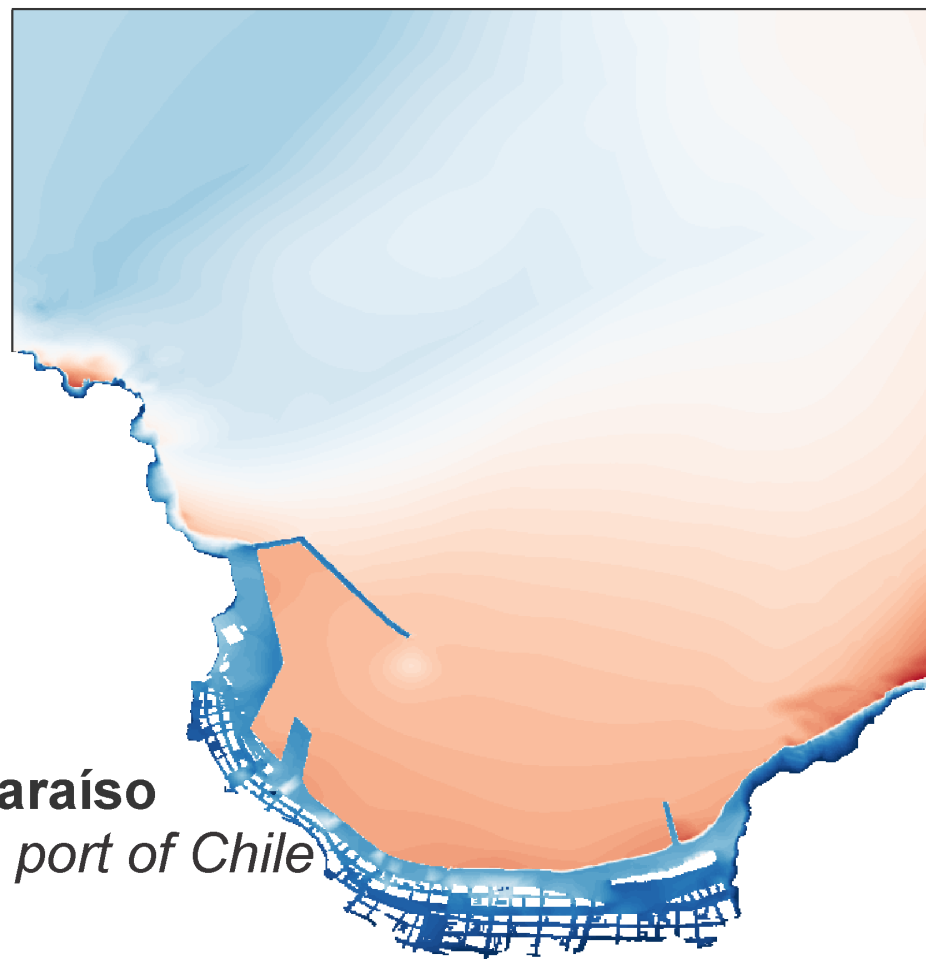
# The last major tsunami to hit Valparaíso was back in 1730

*Descriptions of the 1730 tsunami in Valparaíso (Mercedarian convent),*

*“The convent was almost entirely destroyed by the waves, which reached all the way to the main altar, dragging along the main doors and several altars. The cloister was left in ruins”*



# Numerical simulation of the 1730 tsunami



Japanese cities like Viña del Mar were heavily flooded during the 2011 Japan tsunami



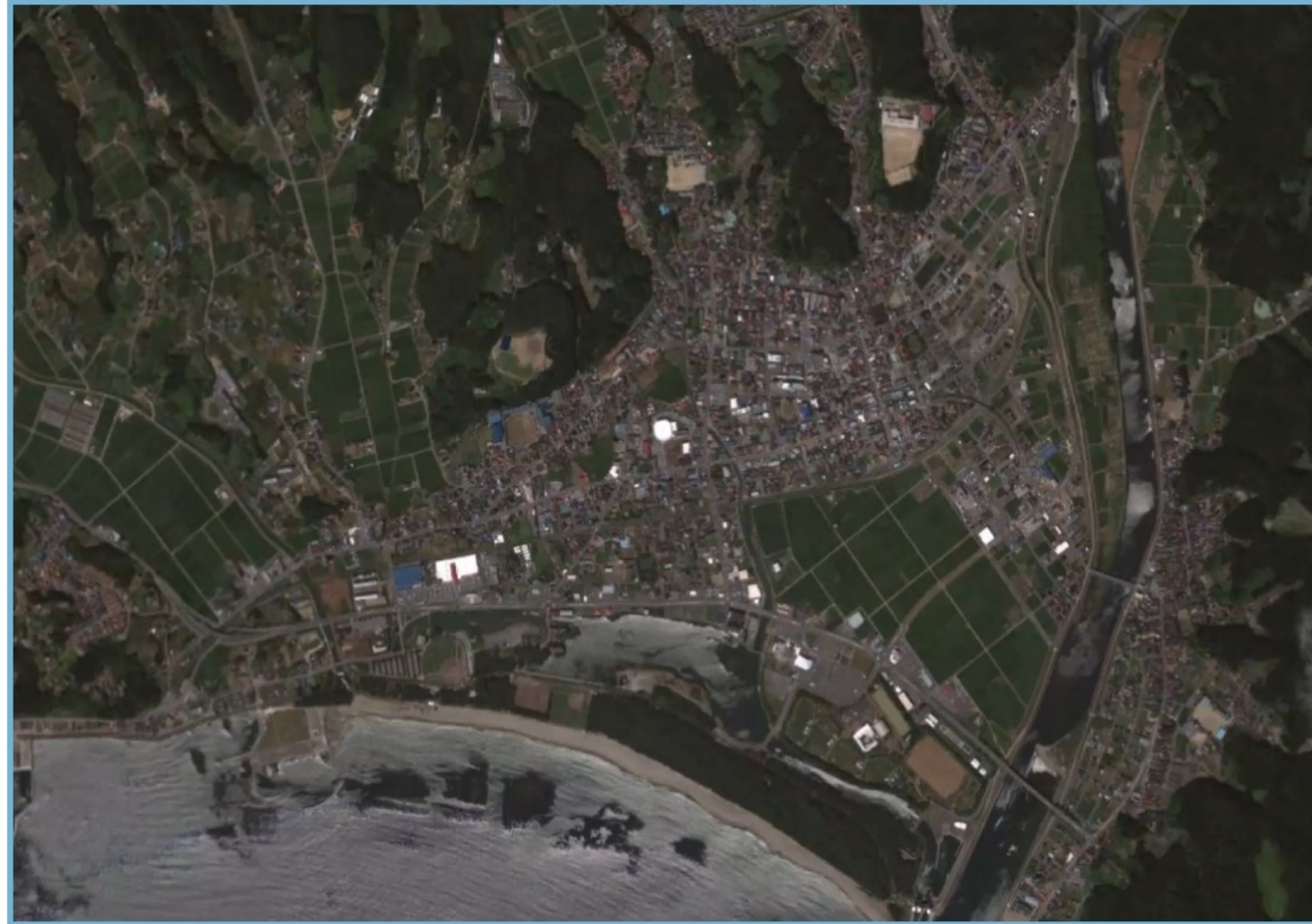
Viña del Mar before the next big tsunami

Japanese cities like Viña del Mar were heavily flooded during the 2011 Japan tsunami

Rikuzen-Takata before the 2011 tsunami



Viña del Mar before the next big tsunami



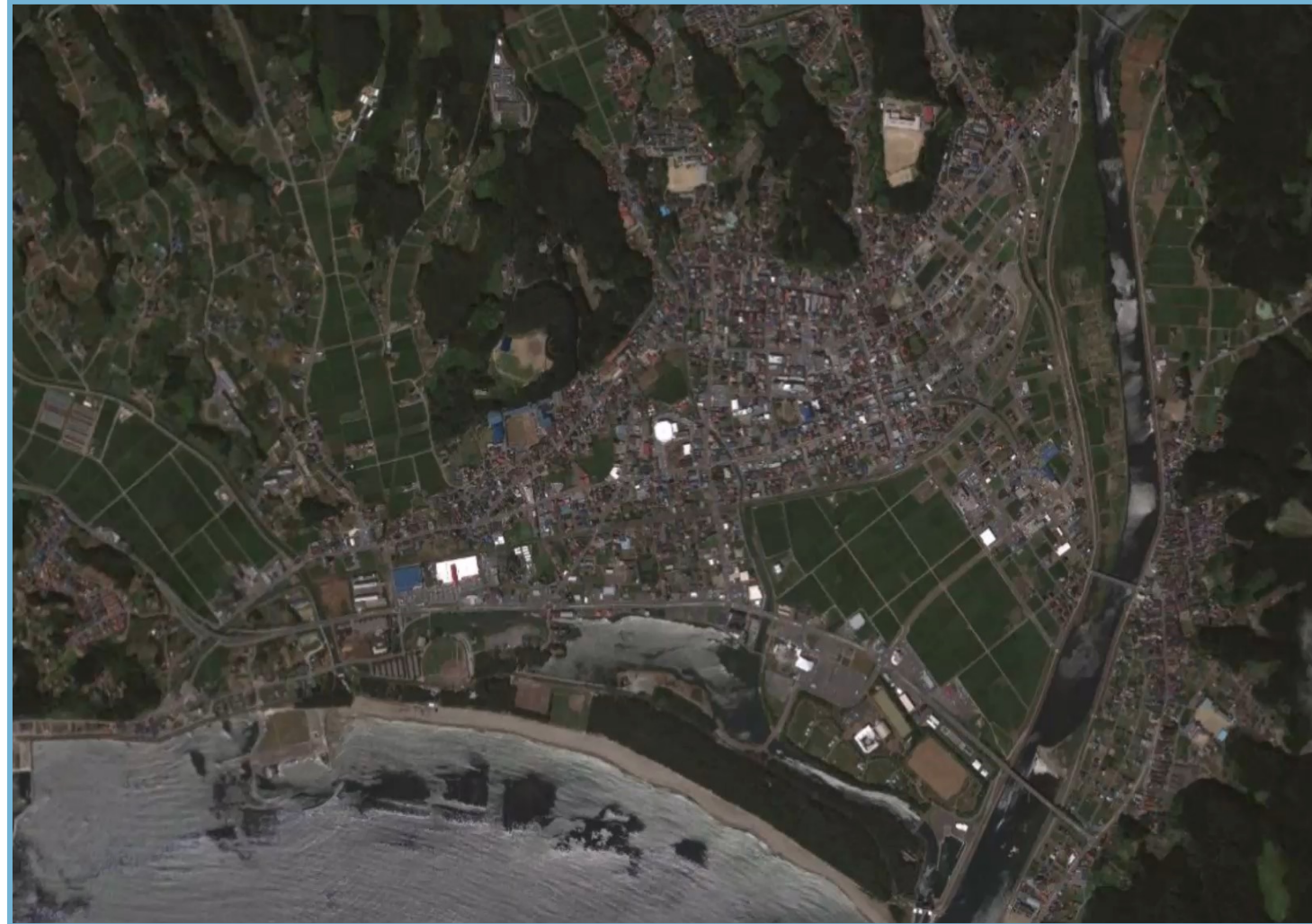
Rikuzen-Takata. Fuente: Google Earth

Japanese cities like Viña del Mar were heavily flooded during the 2011 Japan tsunami

Rikuzen-Takata before and after the 2011 tsunami



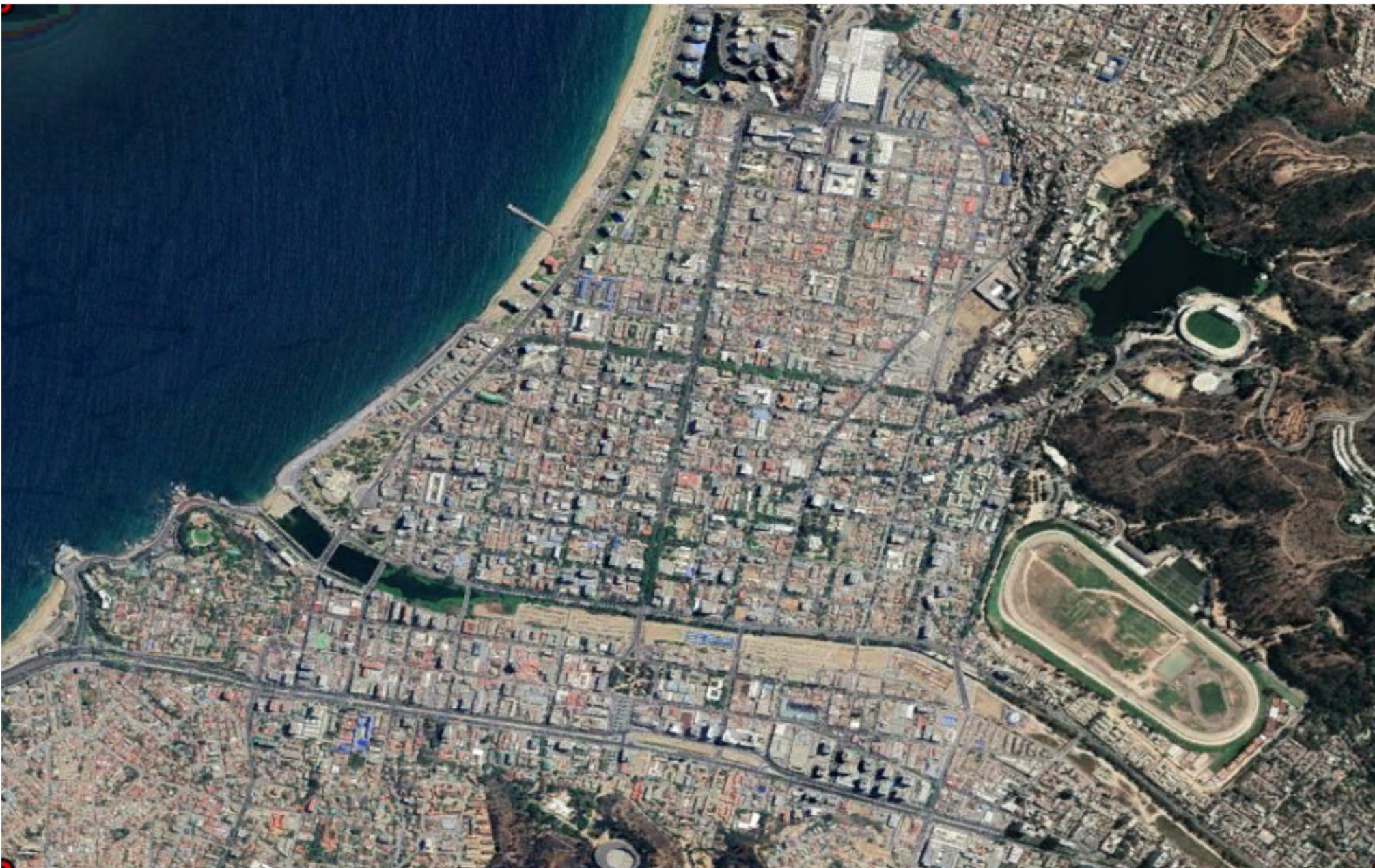
Viña del Mar before the next big tsunami



Rikuzen-Takata. Fuente: Google Earth



## VIÑA DEL MAR (>320 mil habitantes)



# RUTAS DE EVACUACIÓN OFICIALES ([www.onemi.gov.cl](http://www.onemi.gov.cl))





UNESCO / IOC  
INTERNATIONAL TSUNAMI INFORMATION CENTER (ITIC)  
ITIC TRAINING PROGRAMME HAWAII (ITP-HAWAII) TSUNAMI EARLY WARNING  
SYSTEMS AND THE PACIFIC TSUNAMI WARNING CENTER (PTWC) ENHANCED  
PRODUCTS, TSUNAMI EVACUATION PLANNING AND  
UNESCO-IOC TSUNAMI READY RECOGNITION PROGRAMME  
19-30 August 2024 SHOA, Valparaíso, Chile

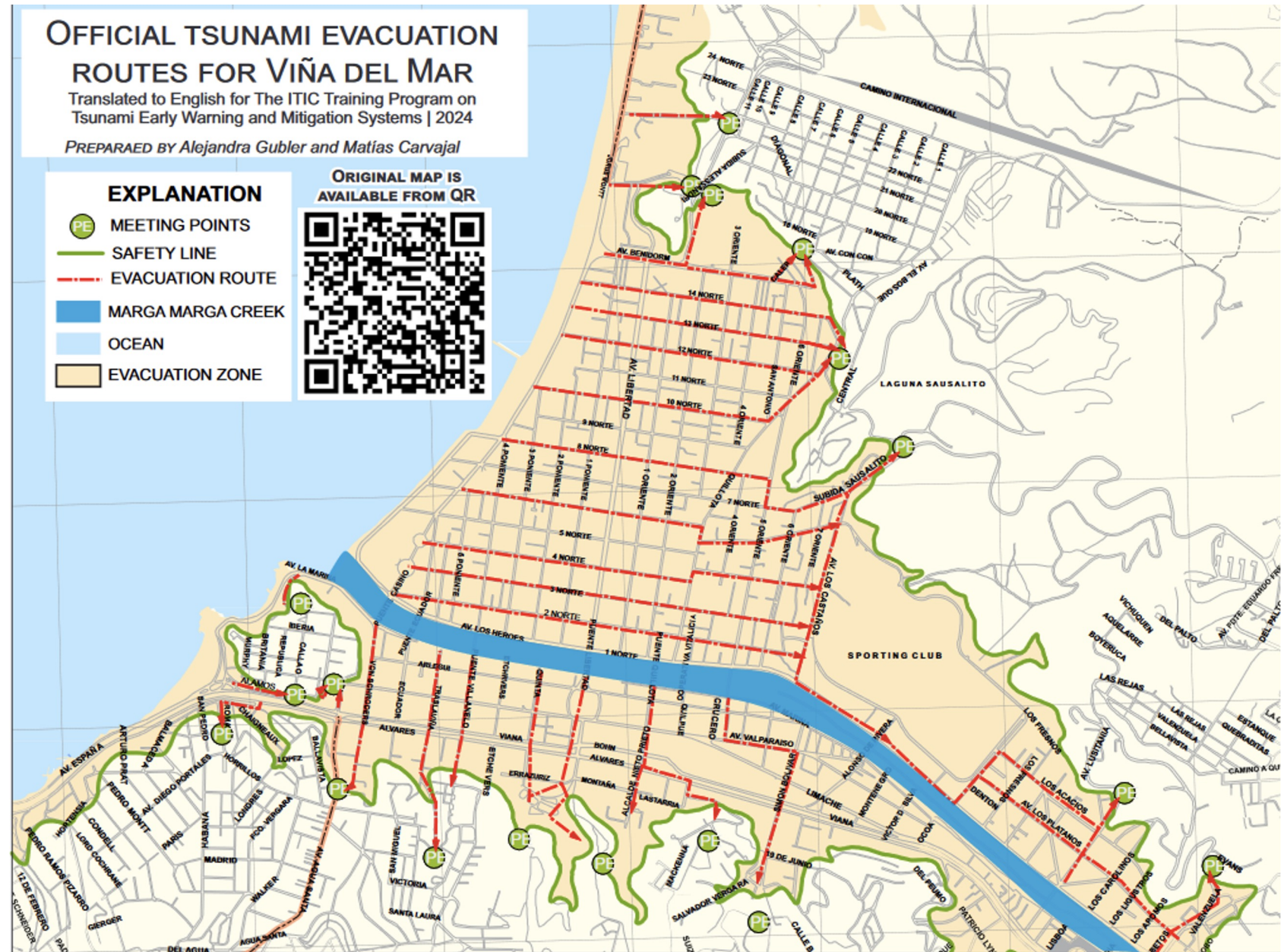
# Did you escape the wave? Evacuation Drill, City of Viña Del Mar

Matías Carvajal (1), Alejandra Gubler (2)

1. *Pontificia Universidad Católica de Valparaíso (PUCV)*
2. *Research Center for Integrated Disasters Risk Management (CIGIDEN)*

# Goal

Assess the effectiveness and practicality of Viña del Mar's official evacuation routes



# Required materials

- ❑ Mobile App installed in your smartphone (both are free)

- ❑ For Iphone:



myTracks - The  
GPS-Logger  
Dirk Stichling

- ❑ For Android:



Geo Tracker - GPS tracker

Ilya Bogdanovich Voyages et Infos locales

PEGI 3

Propose des achats dans l'application

Cette application est compatible avec l'ensemble de vos ap

- ❑ Official tsunami evacuation map for Viña del Mar

# Work groups (same as previous activity)

## GROUP 1

- Julio Castro
- Willberth Forero
- Leanka RT Henry
- Diminski Reweru
- Dulce Calan

## GROUP 2

- Claudia Collao
- Igor Olivares
- Darcy Luuga Naivins Chan-Kum Tong
- Muhammad Harvan
- Hita Zabi Ortiz

## GROUP 3

- Jaime Corales
- Steven Aguilera
- Linda Tonowane
- Kassia Johnson
- Luis Fernando Alconero

## GROUP 5

- Carolina Henríquez
- Andres Romero
- Mabiús Francis
- Joji Malodali
- Juritzy Pérez

## GROUP 4

- Jasna Haro
- Rodrigo Andres Asenjo Paredes
- Denisse Llacuachaqui
- Filimone Qaloyawa Rokoiri
- Christiam Gómez

## GROUP 6

- Alejandro Marabolí-Quezada
- Francisco Uribe
- Lisi Seumanutafa Uini
- Fabian Hinds
- Grenfel Defoe

## GROUP 7





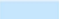
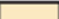
- Cesar Nuñez
- Valeria Tapia
- Mohammed Ahmed Al Madhani
- David Cruz
- Danielle Jalisa Howell

# OFFICIAL TSUNAMI EVACUATION ROUTES FOR VIÑA DEL MAR

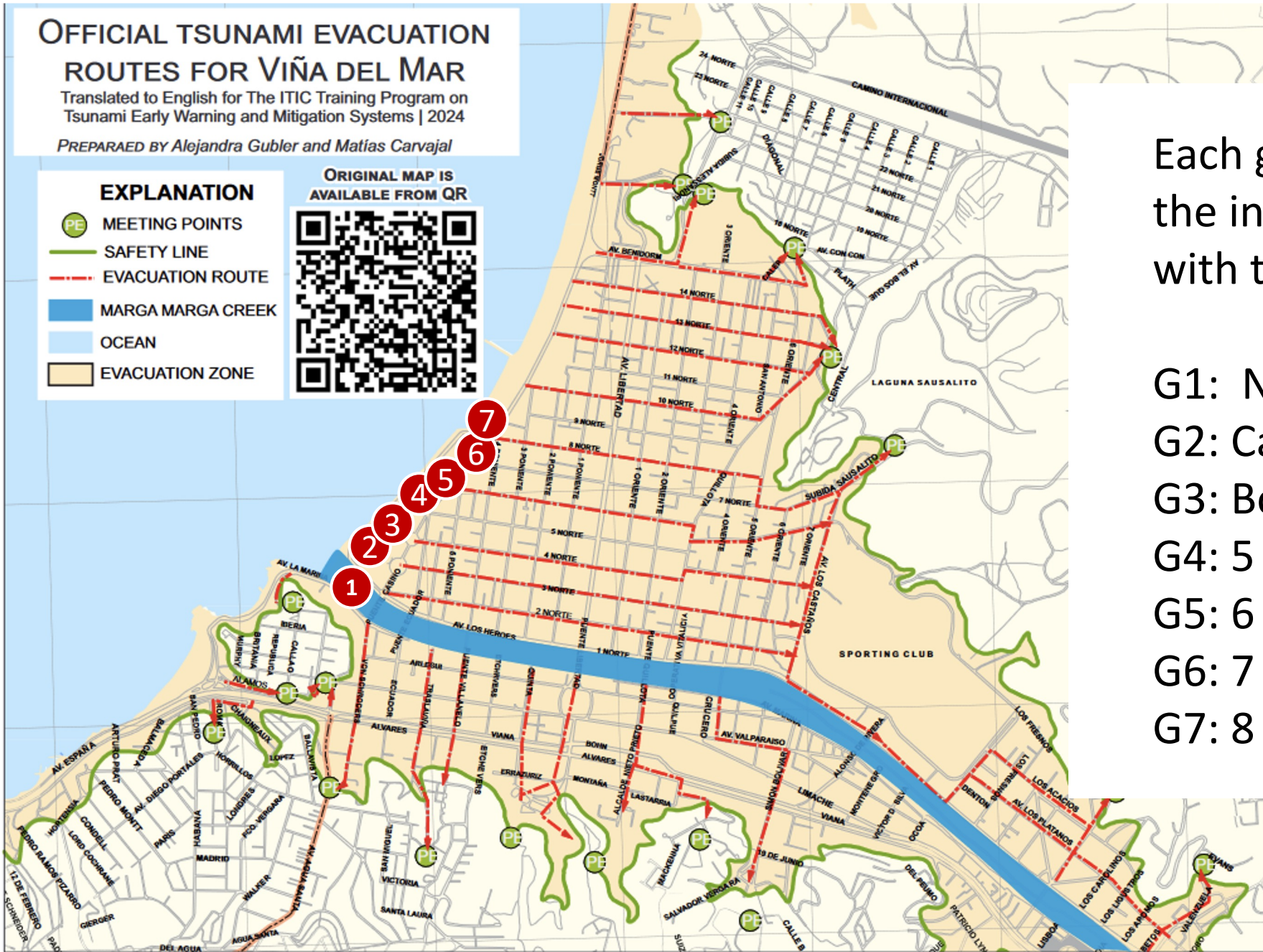
Translated to English for The ITIC Training Program on Tsunami Early Warning and Mitigation Systems | 2024

PREPARAED BY Alejandra Gubler and Matías Carvajal

## EXPLANATION

-  MEETING POINTS
-  SAFETY LINE
-  EVACUATION ROUTE
-  MARGA MARGA CREEK
-  OCEAN
-  EVACUATION ZONE

ORIGINAL MAP IS AVAILABLE FROM QR



Each group (G) should start at the intersection of Avenida Peru with the following locations:

- G1: Nogaró Restaurant
- G2: Casino
- G3: Bonafide Café
- G4: 5 norte street
- G5: 6 norte street
- G6: 7 norte street
- G7: 8 norte street

Group	place/street	Longitude	Latitude
G1	Nogaró Restaurant	-71.5617136	-33.0188954
G2	Casino	-71.5610876	-33.0182366
G3	Bonafide Café	-71.5605516	-33.0177799
G4	5 Norte	-71.5597452	-33.0171499
G5	6 Norte	-71.5586777	-33.0161824
G6	7 Norte	-71.5574995	-33.0153377
G7	8 Norte	-71.5565097	-33.0144224



# Exercise tasks

1. Each group has to go to their assigned starting point

## **Make sure you:**

- Know how the mobile App works before going to your starting point.

1. Once there, walk as a group to your meeting point following the official evacuation route:

## **Make sure you:**

- Start recording your route with the mobile App before leaving your starting point.
- Follow the route indicated in the map, which might be different than what the official signs indicate.
- On your printed map, mark the locations of any signs you encounter. Additionally, take note of any situations you consider positive or negative regarding the evacuation route
- Stop and save the recording once you reach the meeting point.
- Upload your .GPX file in the this [shared folder](#), naming the file as **GX\_lastname\_firstname**