



# INDONESIA TSUNAMI READY

Suci Dewi Anugrah  
Chair of WG3 Tsunami Ready Implementation  
ICG/IOTWMS

# UNESCO/IOC TSUNAMI READY INDICATORS

## TSUNAMI READY INDICATORS

Understanding  
the Hazard and  
Risk

### I ASSESSMENT (ASSESS)

- 1 **ASSESS-1.** Tsunami hazard zones are mapped and designated
- 2 **ASSESS-2.** The number of people at risk in the tsunami hazard zone is estimated
- 3 **ASSESS-3.** Economic, infrastructural, political, and social resources are identified

### II PREPAREDNESS (PREP)

Community  
Awareness

- 4 **PREP-1.** Easily understood tsunami evacuation maps are approved.
- 5 **PREP-2.** Tsunami information including signage is publicly displayed.
- 6 **PREP-3.** Outreach and public awareness and education resources are available and distributed.
- 7 **PREP-4.** Outreach or educational activities are held at least 3 times a year.
- 8 **PREP-5:** A community tsunami exercise is conducted at least every two years

### III RESPONSE (RESP)

Planning and  
Capacity

- 9 **RESP-1.** A community tsunami emergency response plan is approved.
- 10 **RESP-2.** The capacity to manage emergency response operations during a tsunami is in place.
- 11 **RESP-3.** Redundant and reliable means to timely receive 24-hour official tsunami alerts are in place.
- 12 **RESP-4.** Redundant and reliable means to timely disseminate 24-hour official tsunami alerts to the public are in place.

**In Practical:**  
1. Implemented  
Simultaneously  
2. Start from the  
“Easier”

# 12 IOC-UNESCO Tsunami Ready Communities in the Indian Ocean



## INDIA:

1. Venkatraipur (August, 7<sup>th</sup> 2020)
2. Noliasahi (August, 7<sup>th</sup> 2020)

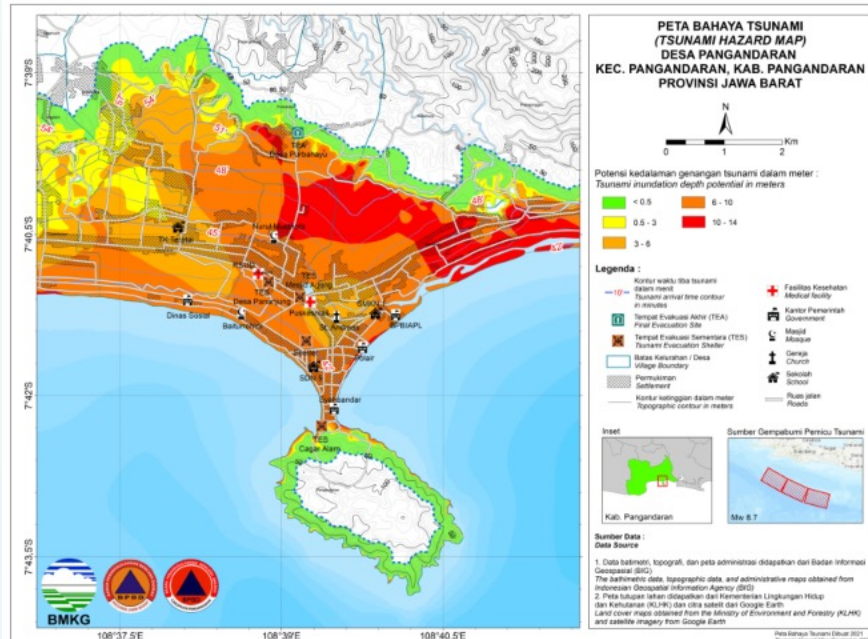
## INDONESIA:

1. Tanjung Bena Village (May, 28<sup>th</sup> 2022)
2. Glagah Village (December, 26<sup>th</sup> 2022)
3. Kemadang Village (November, 26<sup>th</sup> 2022)
4. Pangadaran Village (December, 26<sup>th</sup> 2022)
5. Panggarangan Village (November, 26<sup>th</sup> 2022)
6. Desa Tambakrejo (November, 26<sup>th</sup> 2022)
7. Kuta Mandalika Village (December, 26<sup>th</sup> 2022)
8. Purus Village (December, 26<sup>th</sup> 2022)
9. Lolong Belanti Village (December, 26<sup>th</sup> 2022)
10. Tapakih Village (December, 20<sup>th</sup> 2023)



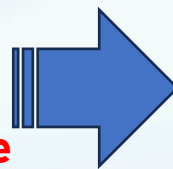
# **IDENTIFYING HAZARD TO UNDERSTAND RISK ASSESSMENT**

# HAZARD, EXPOSED, AND RESOURCE IDENTIFICATION



## 1. Developing Hazard Map of the Worst Scenario

- A map that illustrates **tsunami potential impact** in certain area, that give potential hazard information such as; (1) **Tsunami Arrival Time**; (2) **Inundation Depth**;
- Used as reference for **evacuation route planning** and temporary as well as



## 2. Estimating the exposed

- How many permanent residents living in this area?
- How many temporary residents? (Tourist/ Workers)
- Identify the disabilities
- Distribution of the exposed people

## 3. Identifying Resources

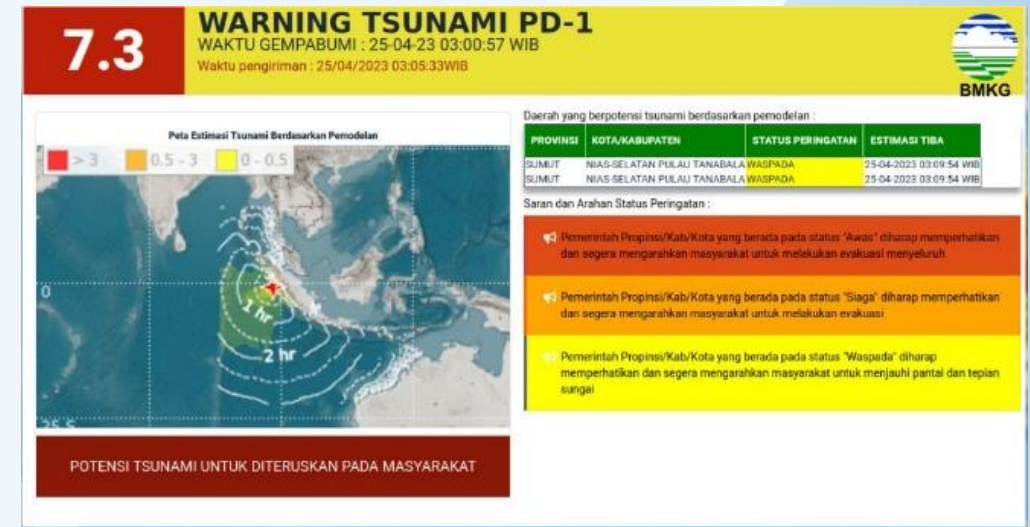
- Available local or national emergency budget,
- Public buildings that can be used as temporary shelters or for capacity- building workshops and meetings,
- local emergency operations or response plans for other hazards,
- social and volunteer organizations, local networks, parent associations of local schools, volunteer university students, etc

**The assessment indicators should be followed by Tsunami Evacuation Plan and Tsunami Emergency Operation Plan.**



# 25 April 2023 Earthquake and Tsunami Warning in Padang

- On Tuesday 25 April 2023, 03:00:57 Western Indonesian Time, the M 7.3 earthquake occurred with a tsunami warning proposal, which further updated into M 6.9 with no tsunami warning proposal.
- It struck West Sumatra and North Sumatra for more than one minute. BMKG disseminated the earthquake information using Warning Receiver System (WRS) on the short and long text format, which blast through multimode mobile phone, public display, social media, telegram, WhatsApp, and others.
- The recognized communities Purus and Lolong Belanti were fast response and able to understand the tsunami warning.
- Responded well based on capacities built through 12 Tsunami Ready indicators
- Conducted self-evacuation protocols
- Well-aware of tsunami evacuation plans, routes, and evacuation sites
- Vulnerable people evacuated by their family and assisted by Local Disaster Ready Group
- Understanding about hazard in their area reduced panic.
- Although there was no significant tsunami (detected only 11 cm), community accepted action taken was necessary



# ENGAGING OTHERS PARTIES TO STRENGTHEN PREPAREDNESS CAPACITY

- The Yogyakarta International Airport (YIA) in South Java provides a shelter evacuation for the Tsunami Ready Community of Glagah, since the airport is the only infrastructure which has a high building in their neighborhood.
- The community of Tanjung Benoa Village-Bali has a support from the hotel to utilize the hotel's roof top for evacuation place.



**Evacuation shelter for tsunami in the YIA that also used by the community surrounding as the evacuation place**



**Roof Top Hotel in Tanjung Benoa used by community as the evacuation place**





# **DEVELOPING PREPAREDNESS AND RESPONSE CAPACITY**

# MOBILE APPLICATION FOR ACCESSING RAPID INFORMATION EVACUATION MAP AND

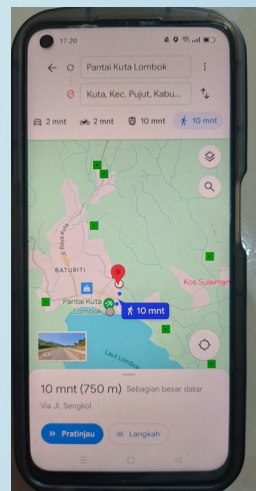
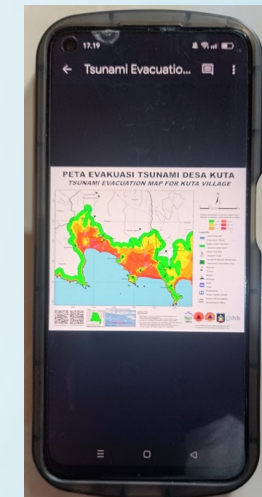
- The Community developed the evacuation map based on the tsunami hazard map
- To raise public awareness, Kuta Mandalika coastal community works closely with BMKG to develop the mobile application to help community accessing the earthquake and tsunami rapid information.
- The application is able to provide evacuation route and place for the community and tourist



Tsunami Evacuation Map of Kuta Mandalika



Kosina Desta, Mobile Apps for tsunami evacuation



# INNOVATION ON THE OUTREACH ACTIVITIES



**Tsunami game board for youth to learn the tsunami ready in Panggarangan**

- To reach the youth's awareness, a suitable method of outreach activities should be considered:
  - Using game board to understand the concept of tsunami ready in fun learning approached
  - Story telling to sustain and enhance the awareness
  - Using fancy platform (t-shirt, calender) as media of education material to promote the awareness and preparedness
- “Door to Door” outreach activities in Purus and Lolong Belanti educate all families in the neighborhoods
- Socializing the tsunami ready during religious activities



**Story Telling Workshop in Panggarangan**



**Awareness Campaign on t-shirt**



# Annual Tsunami Drill Every National Preparedness Day (April 26)



- Building a culture of tsunami resilience through the continuous drill.
- National Disaster Awareness Day in Indonesia is remembrance every April 26. On that date, the Spirit of National Resilience is practiced with conduct the emergency drill such as the earthquake, tsunami, and others.
- **Tsunami Fun Drill and Run for Live**

# MOBILE APPLICATION FOR EARLY WARNING, EARLY RESPONSE

- **Sirens for Rapid Information on Tsunami Alert** is ANDROID based mobile phone application, aims to help the local disaster management office to disseminate the tsunami information and evacuation announcement as the early warning service to the coastal community at tsunami risk.
- SIRITA application will ringing when like a Coastal Tsunami Siren as soon as BMKG issuing the tsunami early warning potential.



# **MAINSTREAMING THE PROGRAM**

# THE COMMUNITY EDUCATION ACTIVITIES OF SEKOLAH LAPANG GEMPA (SLG) ON CONTRIBUTING TO THE DEVELOPMENT OF TSUNAMI READY COMMUNITY

- The SLG (Earthquake Field School) is a capacity building activity to enhance local government and community awareness and response
- **Create Champions** from LDMO, Community, Army, stakeholders related to the disaster management and response, School, community, private sector are involved.
- The scope of the SLG:
  1. Field Survey and advocating the implementation of the 12 indicators
  2. TOT Workshop of the SLG
  3. School Exercise




**PUSAT GEMPABUMI DAN TSUNAMI KEDEPUTIAN BIDANG GEOFISIKA**  
 Jl. Angkasa 1 No. 2, Kemayoran, Jakarta 10720  
 Telp. (021) 424 6321 | Fax. (021) 424 6703

Salah satu tugas BMKG adalah menyediakan dan menyebarkan informasi gempabumi dan tsunami, memastikan informasi dapat diterima dan dipahami pihak terkait utamanya Badan Penanggulangan Bencana Daerah (BPBD).

Pemahaman yang benar mengenai informasi gempabumi dan tsunami menjadikan BPBD dapat memberikan arahan yang tepat kepada masyarakat.

**SEKOLAH LAPANG GEMPABUMI**

**METODE**

1. Paparan tentang potensi gempabumi dan tsunami serta kesiapsiagaan menghadapinya
2. Diskusi kelompok mengidentifikasi peran masing-masing kelompok
3. Table Top Exercise (TTX) simulasi dengan skenario gempabumi dan tsunami

**TUJUAN & SASARAN**

**Tujuan :** Mengukuhkan peran BPBD dan pemangku kepentingan di daerah sebagai simpul komunikasi agar dapat memahami informasi gempabumi dan peringatan dini tsunami

**Sasaran :** BPBD, Masyarakat, Sekolah, Aparat dan Media di wilayah rawan gempabumi dan tsunami.

**MANFAAT**

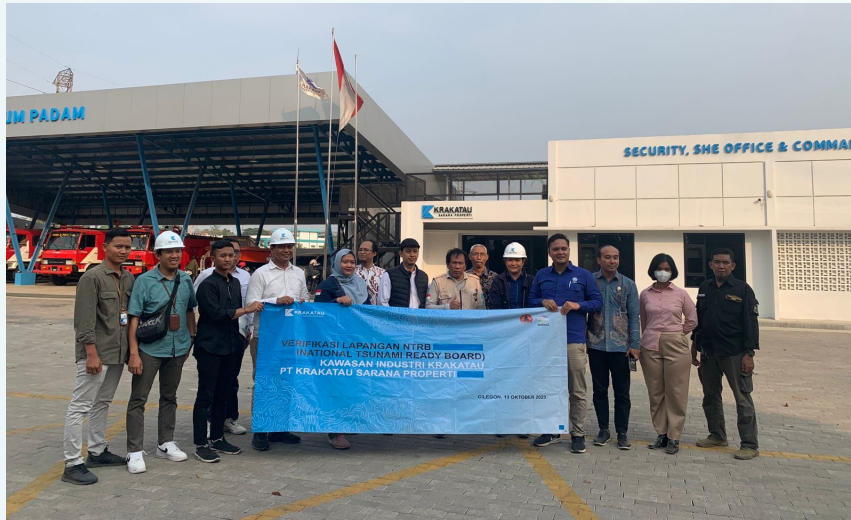
- BPBD dan pemangku kepentingan memahami informasi gempabumi dan peringatan dini tsunami dari BMKG
- Masyarakat siaga dan tanggap terhadap ancaman gempabumi dan tsunami di wilayahnya
- Media dapat berperan dalam rantai peringatan dini tsunami

**PELAKSANAAN SLG**

2015	▶ 10 Kota / Kabupaten
2016	▶ 23 Kota / Kabupaten
2017	▶ 1 Kota
2018	▶ 2 Kota
2019	▶ 30 Kota / Kabupaten
2020	▶ 1 Kota / Kabupaten
2021	▶ 30 Kota / Kabupaten
2022	▶ 18 Kota / Kabupaten

**145**

# Tsunami Ready Community Activity: Strengthening Surrounding Community in the Industrial Estate

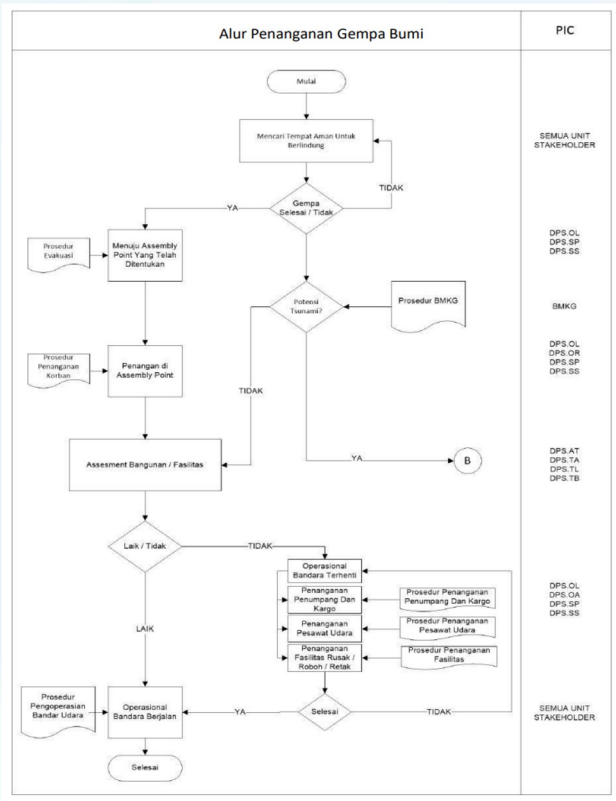


- One of the city in Indonesia that may impacted by the tsunami is the Cilegon city located in the West of Banten province. The city is the strategic area which has Cilegon Industrial estate. The PT Krakatau Sarana Properti (KSP) as the industrial community and fisherman surrounding there area now already completing the rapid information or communication mode, develop the Standard Operating Procedures and other communication chain, build the tsunami ready community, and evacuation infrastructures.
- Fisherman Community in the Cilegon Industrial Estate has facilitated the Siren, Assembly Point, and Evacuation Sign by KSP Industrial Company

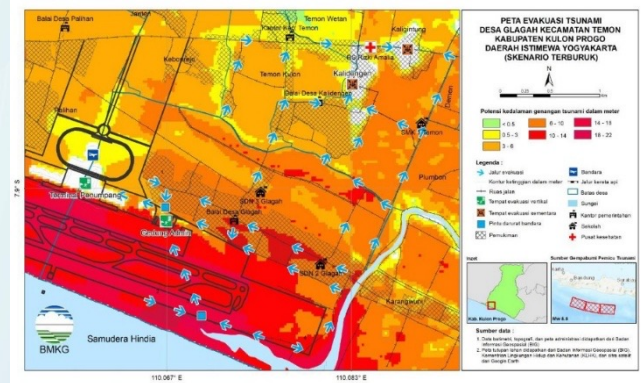


# Tsunami Ready Community Activity: Earthquake and Tsunami Evacuation Drill which involving the Surrounding Community

- Tsunami education and training in the airport must cover important aspects around tsunami, such as an introduction to the potential tsunami in the area, the history of tsunami that had occurred in the past, and the form of anticipation that must be given.
- In Bali and Yogyakarta International Airport the public education of earthquake and tsunami has been conducted, including distribute the tsunami ready book.



Airport Tsunami Management Plan



Airport Tsunami Evacuation Map

# CHALLENGES

- **Finding Resources**
  - Budget, Social Resources, Policy,
- **Create Ownership.**
  - Community should have the ownership
- **Sustainability**
  - Maintaining and improving the Tsunami Ready implementation
- **Monitoring Tsunami Ready**
  - Report regularly the Tsunami Ready Implementation

# LESSON LEARNT AND REMARKS

- Engaging many collaborators (NTWC, NDMO, industry, critical infrastructure, hotel, University) to solve the limitations of existing end-to-end tsunami early warning information delivered to the targeted coastal community at tsunami risk.
- The champion (group of preparedness, community leaders) has a dominant role in carrying out public education and awareness activities.
- Developing various innovation of the preparedness activities outreach to approach all component of the communities Utilizing the existing program as platform to develop tsunami resilience
- Building a culture of tsunami resilience through the continuous drill and providing routine tsunami education will increase the community resilience.
- Optimizing the existing program as a platform for Tsunami Ready
- Expanding Tsunami Ready Implementation to speed up the Tsunami Resilience

THANK YOU  
suci.dewi.sda@gmail.com