



UNESCO/IOC – NOAA ITIC Training Program in Hawaii (ITP-Hawaii)  
TSUNAMI EARLY WARNING SYSTEMS  
AND THE PACIFIC TSUNAMI WARNING CENTER (PTWC) ENHANCED PRODUCTS  
TSUNAMI EVACUATION PLANNING AND UNESCO IOC TSUNAMI READY PROGRAMME  
7-18 August 2023, Honolulu, Hawaii USA

# 14.4 Create Community Evacuation Maps

## Paper and Pencil Exercise

---

Carolina Hincapie-Cardenas      Desireé Bayouth-García

UNESCO/IOC – NOAA International Tsunami Information Center



# Required materials



# Exercise tasks

---

- Draw the outline of the map (**green** marker) and label it (black marker).
- Draw the outline of the coastline (**blue** marker)
- Define the tsunami evacuation zone (**- - - red** marker) in the map extent
- Identify the location of the Emergency Centers and mark them with a **yellow** label
- Identify the critical points (hospitals, schools, flammable facilities, bridges) with **red** labels and number them. Build a legend with symbology and a list of the numbered critical points

# Exercise tasks

---

- Define the Assembly Points and Evacuation Centers (**green** marker and **white** label)
- Define the Evacuation Routes (**green** marker)
- Define the hazard zone and evacuation signs to be installed
  - **Green** label = Sign that indicates the direction of evacuation (possible evacuation signal). Indicate the distance to the nearest assembly point.
  - **Red** label = Sign that indicates the hazard zone (entering or leaving).

# Exercise tasks

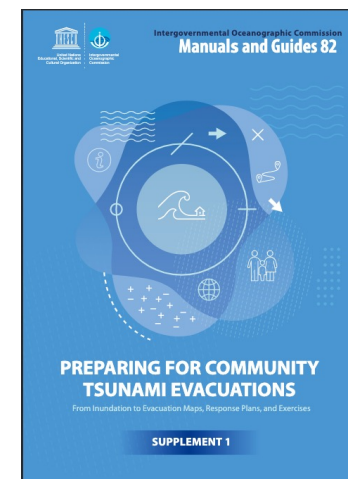
- Determine the evacuation distance from the group's scenario area to the nearest assembly point or area outside the evacuation zone.

$$\text{Evacuation Distance} = \text{Walking speed} * \left( \frac{\text{Expected tsunami arrival time}}{\text{Evacuation start time}} \right)$$

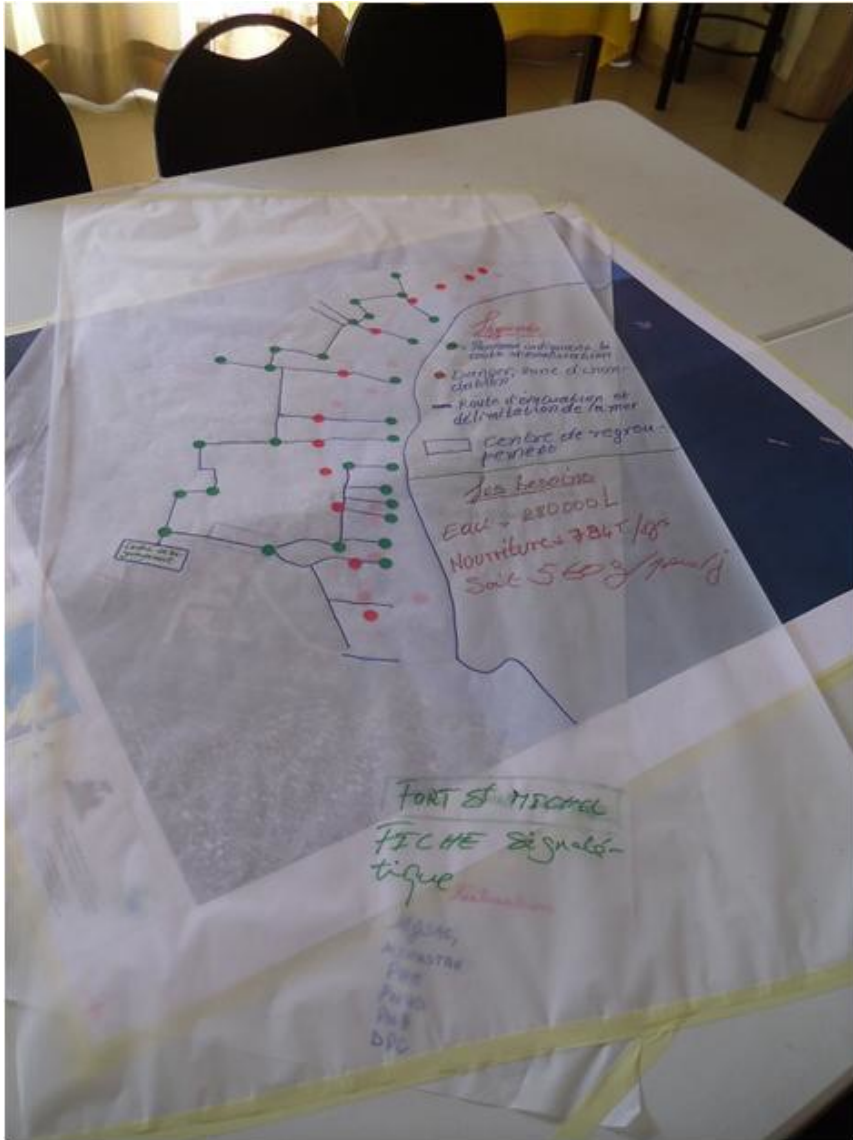
- Determine the best route based on the time you have before a local event

REFER TO  
Module 2:  
Developing Tsunami  
Evacuation Maps  
(Page 37)

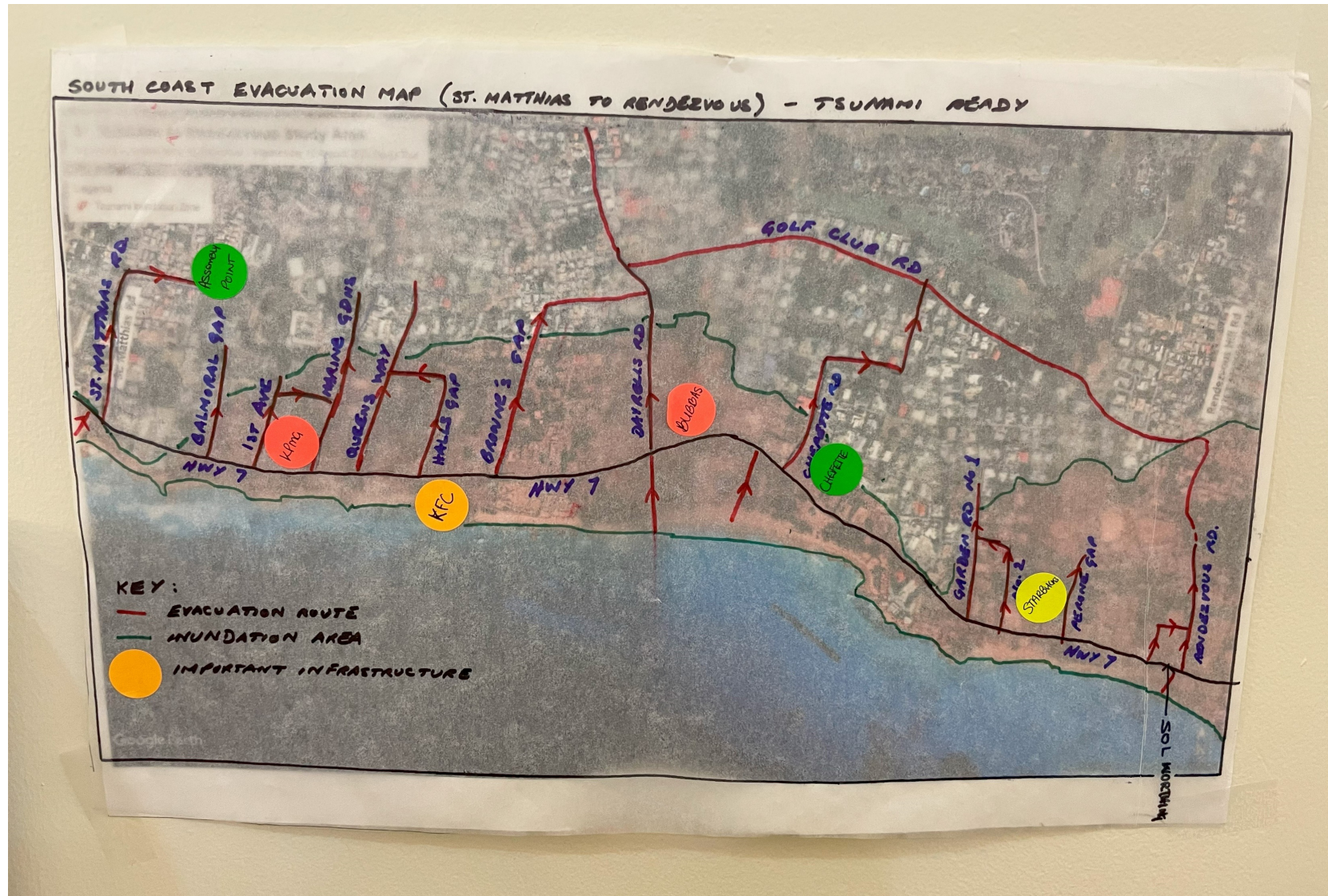
- **2.2.3 Determine  
Evacuation Time  
(Pages 39-40)**



# What does the product look like?



# What does the product look like?



# Use laptops, smartphones, Google Earth





# Area of interest

---



# Area of interest



# Work groups

---

## ■ GROUP 1

- Deslone Lanbong
- Malia Pisi
- Rickiuo Robon
- Johnny Musrasrik
- Kenson Stoddard
- Lining Sun

## ■ Scenario

- Local event while you are stuck in traffic when back to the hotel (Ala Moana Boulevard and Queen Street)

## ■ GROUP 2

- Junior Cruise
- Litiana Bainimarama
- Heileen-Annette Togiamana
- Lu'isa Taunga
- Lyndon David-Pelle
- Frank Bale

## ■ Scenario

- Local event while you are at the Makai Food Court (Ala Moana Center)

# Work groups

---

## ■ GROUP 3

- Miriam Kataunati
- Sitamipa Paea
- Soane Laitia Fifita
- Glen Perrin
- Dennis Marcelle

## ■ Scenario

- Local event while you are checking-in to the hotel (Ala Moana Hotel)

## ■ GROUP 4

- Aisea Fungavai
- Limoni Mativa
- Erouscilla Joseph
- Daniel Epprecht
- Miguel Abitang
- Truyen Pham

## ■ Scenario

- Local event while you are asleep in your hotel room in the early morning (Ala Moana Hotel, floor 5)

# Work groups – ‘paper and pencil Activity’

---

## ■ GROUP 5

- Rocky Neveserveth
- Saula Mule
- Gerardo Rodriguez
- Shaila Barzola
- Simon Boxall
- Ariffin Munirah

## ■ Scenario

- Local event while you are having dinner at Red Lobster (Ala Moana Boulevard and Hobron Lane)

## ■ GROUP 6

- Sharl Noboa
- Tauempa Tutakiao
- Nathan Tisam
- Eumni Kim
- Kristel Espinoza Hernandez
- Racquel Davis

## ■ Scenario

- Local event while you are enjoying your day at the beach next to the Hilton Lagoon



UNESCO/IOC – NOAA ITIC Training Program in Hawaii (ITP-Hawaii)  
TSUNAMI EARLY WARNING SYSTEMS  
AND THE PACIFIC TSUNAMI WARNING CENTER (PTWC) ENHANCED PRODUCTS  
TSUNAMI EVACUATION PLANNING AND UNESCO IOC TSUNAMI READY PROGRAMME  
7-18 August 2023, Honolulu, Hawaii USA

# Thank You

---

Carolina Hincapie-Cardenas      Desireé Bayouth-García

UNESCO/IOC – NOAA International Tsunami Information Center

