

# ST. KITTS AND NEVIS TSUNAMI WARNING FOCAL POINT

Presented by

Supt. Lyndon David

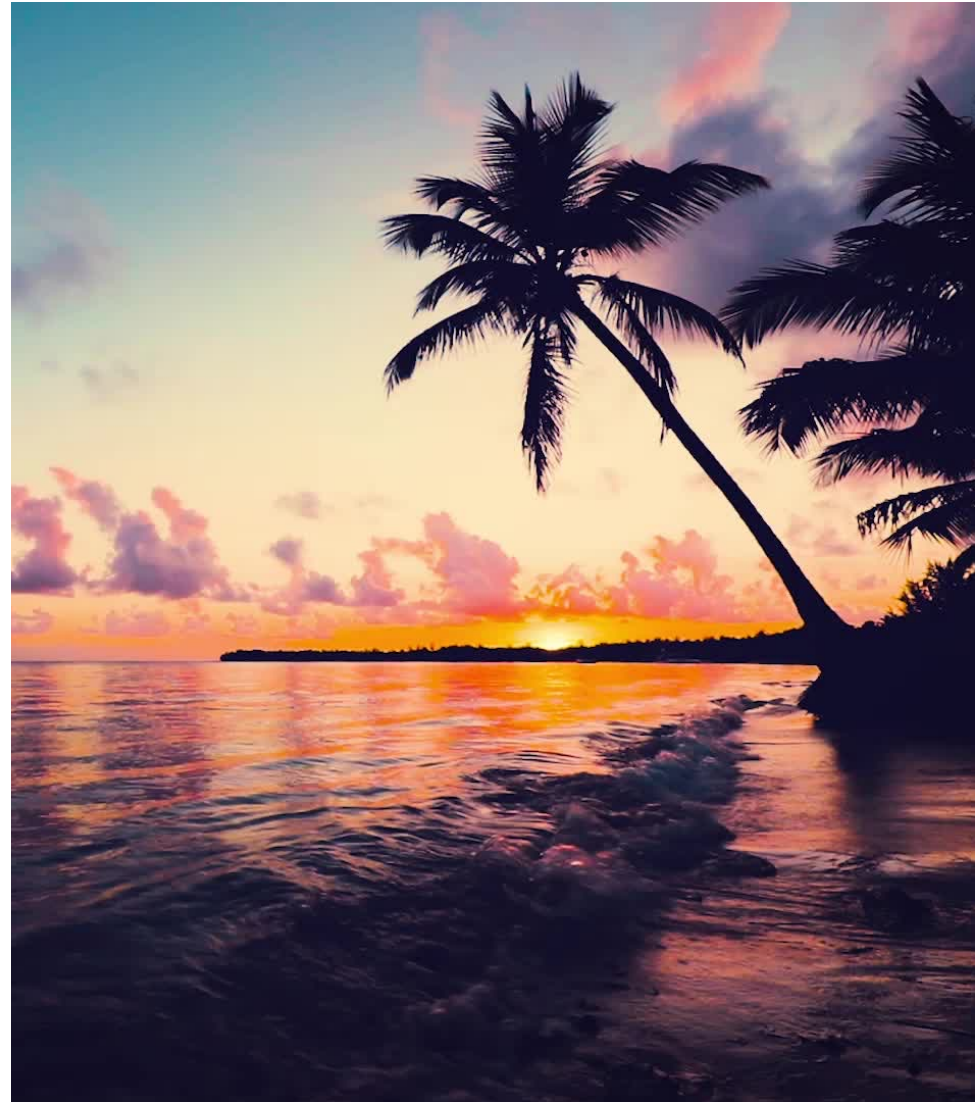
Tsunami Warning Focal Point Coordinator

6 August 2023



# INTRODUCTION

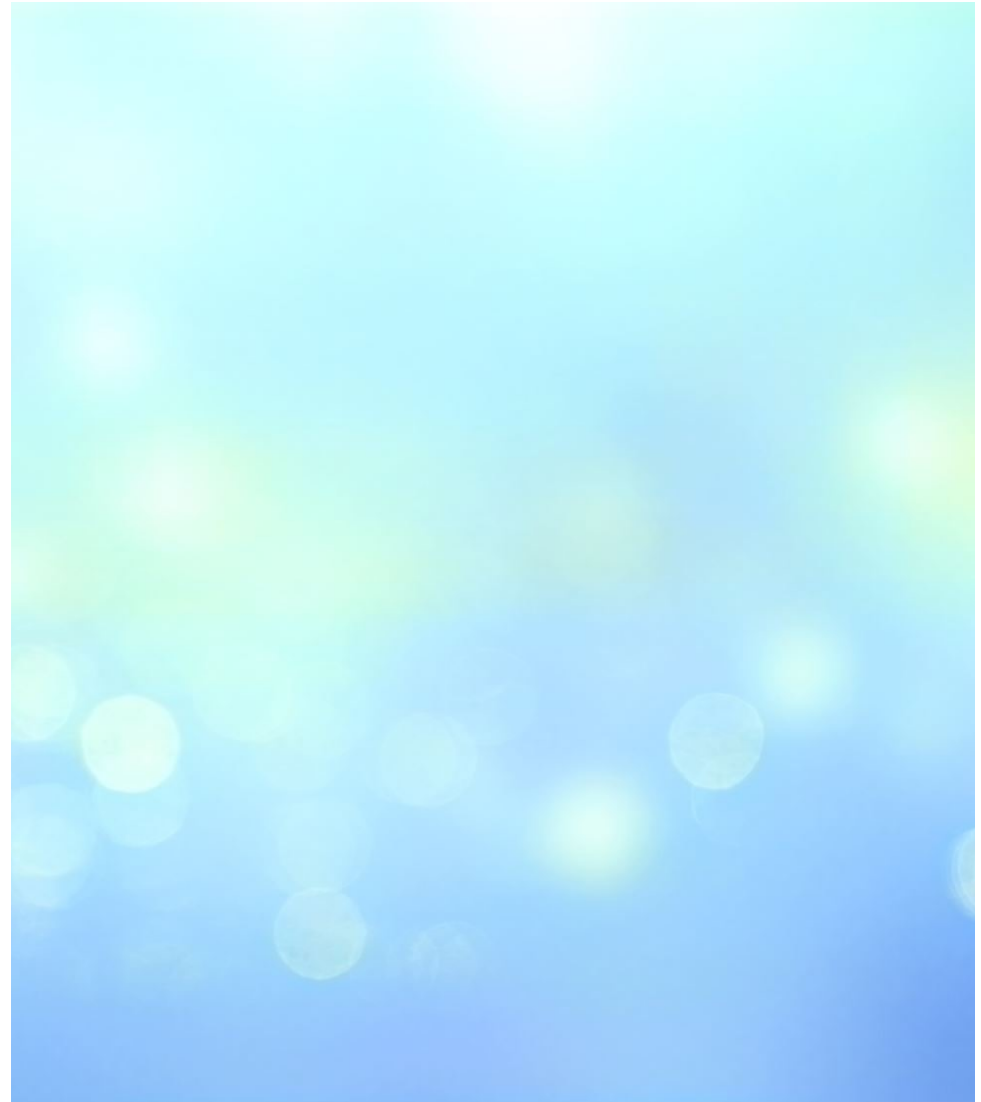
- Constitutionally my country has four (4) names: Saint Kitts and Nevis, The Federation of St. Kitts and Nevis, St. Christopher and Nevis, and the Federation of Saint Christopher and Nevis.
- An island nation with two islands in the West Indies that are a part of the Lesser Antilles' Leeward Islands chain.
- The smallest sovereign Federation in the world covering 261 square kilometers.
- King Charles III is head of state who is represented by a Governor General..
- The only country that has sovereign federation in the Caribbean.



# INTRODUCTION

The capital is Basseterre which is situated on St. Kitts.

The primary port for cargo and passenger entry is Basseterre. Across a narrow channel known as The Narrows, Nevis, a smaller island, is located about 3 kilometers (2 miles) southeast of Saint Kitts.



# INTRODUCTION

- Focal point information
  - In 2016, St. Kitts and Nevis obtained Tsunami recognition due to hard work done by NEMA and its associated partners.
  - In 2021, St. Kitts and Nevis was recertified.



# BRIEF HISTORY



The first British colony in the Caribbean was established in 1623 on what is now Saint Kitts and Nevis.

1623

The two-island federation and the United States have had cordial diplomatic ties ever since Saint Kitts and Nevis gained independence in 1983.

1983

1967

Saint Kitts and Nevis, along with Anguilla, became a self-governing state in association with Great Britain in 1967, ending centuries of British and French colonial rule.



# CULTURE

- The West African traditions of the slave population imported during the colonial era are responsible for the culture of St. Kitts and Nevis.
  - The native Caribs protected their homeland by attacking the colonies.
  - The British took over St. Kitts and Nevis by 1782 and remained in charge until independence in 1983.
  - On St. Kitts, Carnival is in full swing during the holiday season.
  - Mid-December sees the opening gala, and festivities continue until New Year.
- 



## LANGUAGE

- Only English is used in official documents.
- People in Saint Kitts and Nevis speak a variant of Creole English known as Saint Kitts Creole (Dialect).
- The accent used in the islands has a West Indian inflection.

# GEOGRAPHY

- St. Kitts and Nevis has a landmass of 270 square kilometers.
- St. Kitts, the larger island, measures 180 square kilometers and is situated at latitude 17.30 N and longitude 62.80 W.
- Nevis is 93 square kilometers and is situated 3 kilometers south-east of St. Kitts at latitude 17.10 North and longitude 62.35 West.



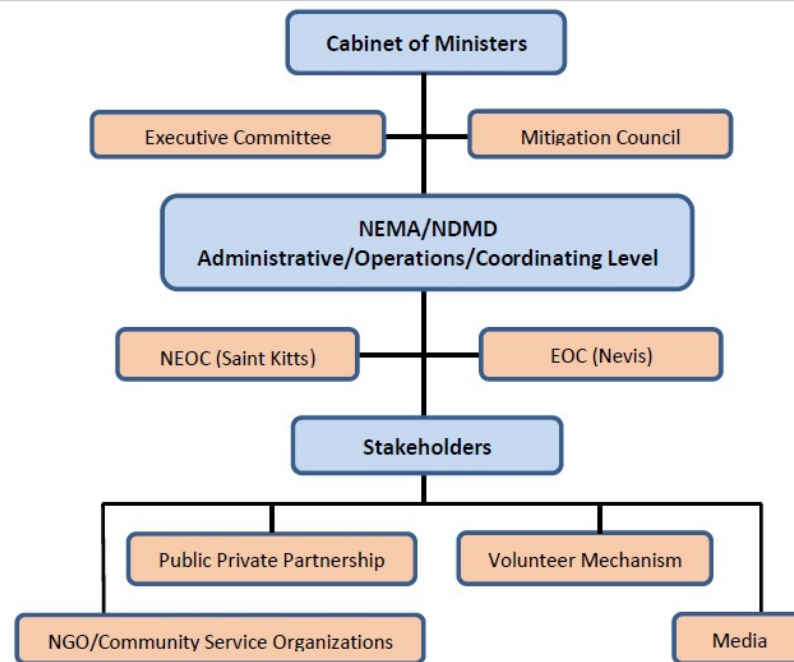
# MAP OF ST. KITTS AND NEVIS



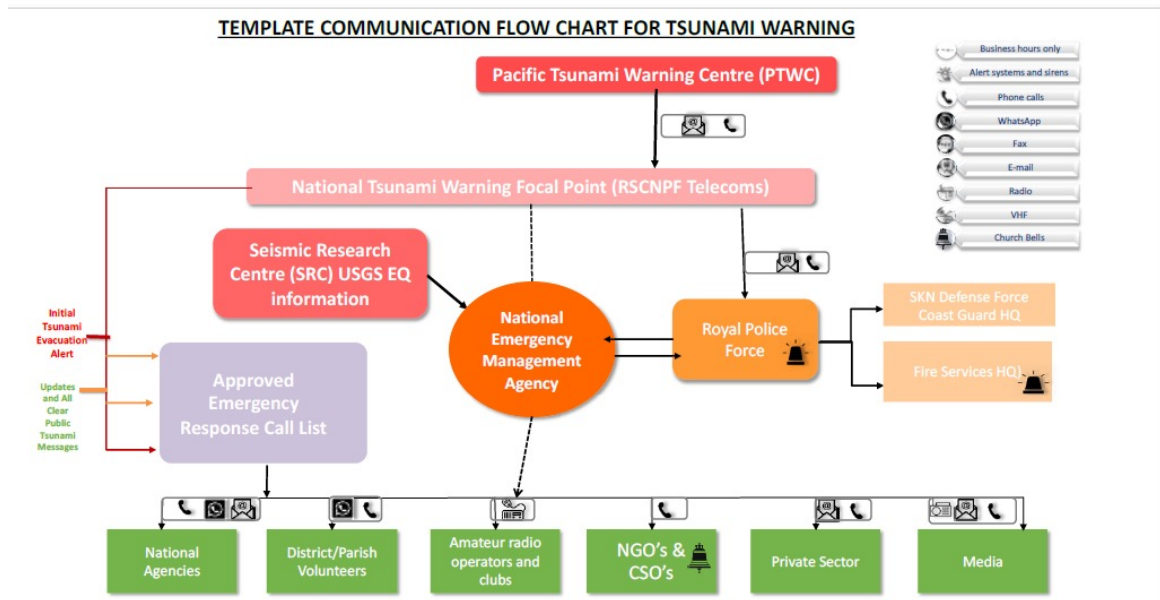
## CONCISE INFORMATION

|               |   |
|---------------|---|
| Official Name | Federation of Saint Christopher and Nevis |
| Capital       | Basseterre                                |
| Population    | 48300                                     |
| Area          | 261 km <sup>2</sup>                       |
| Currency      | East Caribbean Dollar                     |
| Religion      | Protestant                                |
| Language      | English                                   |
| Major Cities  | Basseterre,<br>Cayon,Charlestown          |

# ST. KITTS AND NEVIS NATIONAL EMERGENCY COORDINATION AND MANAGEMENT



# COMMUNICATION FLOW CHART FOR TSUNAMI WARNING





## Welcome to the Central Forest Reserve National Park

An area rich in fauna and flora bio-diversity, the home of numerous plant species some of which are endemic to the island and the Lesser Antilles. The CFRNP also houses a number of scenic rainforest trails for an enhanced eco-tourism experience.

The Central Forest Reserve consists of all the land area on the island of St. Kitts that is 1000 feet above sea level. The area covers 25% of the total land area of St. Kitts, which effectively spreads over the central portion of the island. Except for the South East Peninsula, the Reserve influence the entire island.

One of the most important ecological functions of the Central Forest Reserve is its role of providing most of the water to the country. The water which flows along the deep, steep slopes of the mountains and hills of the Central Forest Reserve, feeds into water sheds and catchments and is distributed for use by the islanders. As you hike through the hills of the Central Forest Reserve, you will be surrounded with the melodious sounds of birds, and a vast variety of plants.

You will experience the exquisite ambiance of tropical panoramas and the breath-taking view of a majestic volcano.

The forested area of St. Kitts has traditionally been used for small-scale collection of trees, plants, and plant parts for a variety of purposes. Some of these include:

- Wood for carving toys, trinkets, craft materials and furniture.
- Charcoal production.
- Recreational activities such as camping, picnics, hiking etc.
- Herbs, barks and roots for flavoring of drinks and food products, or for medicinal purposes.
- Sticks for traditional fish traps construction.











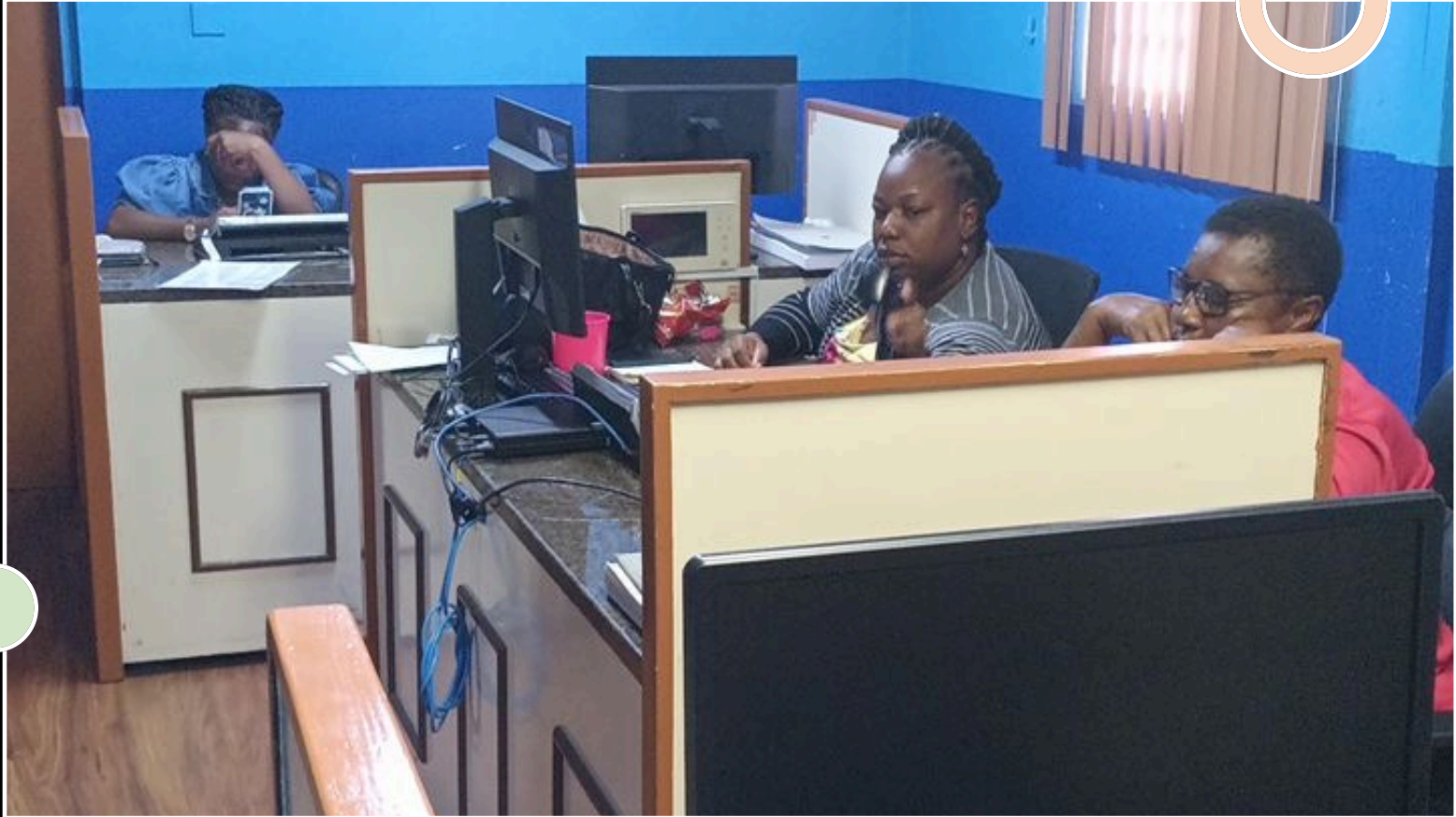














END

- Thank you very much for your attention.

• **QUESTIONS?**