



NATIONAL DISASTER MANAGEMENT OFFICE

#EARLYWARNING #EARLYACTION

TSUNAMI READY WORKSHOP



OVERVIEW

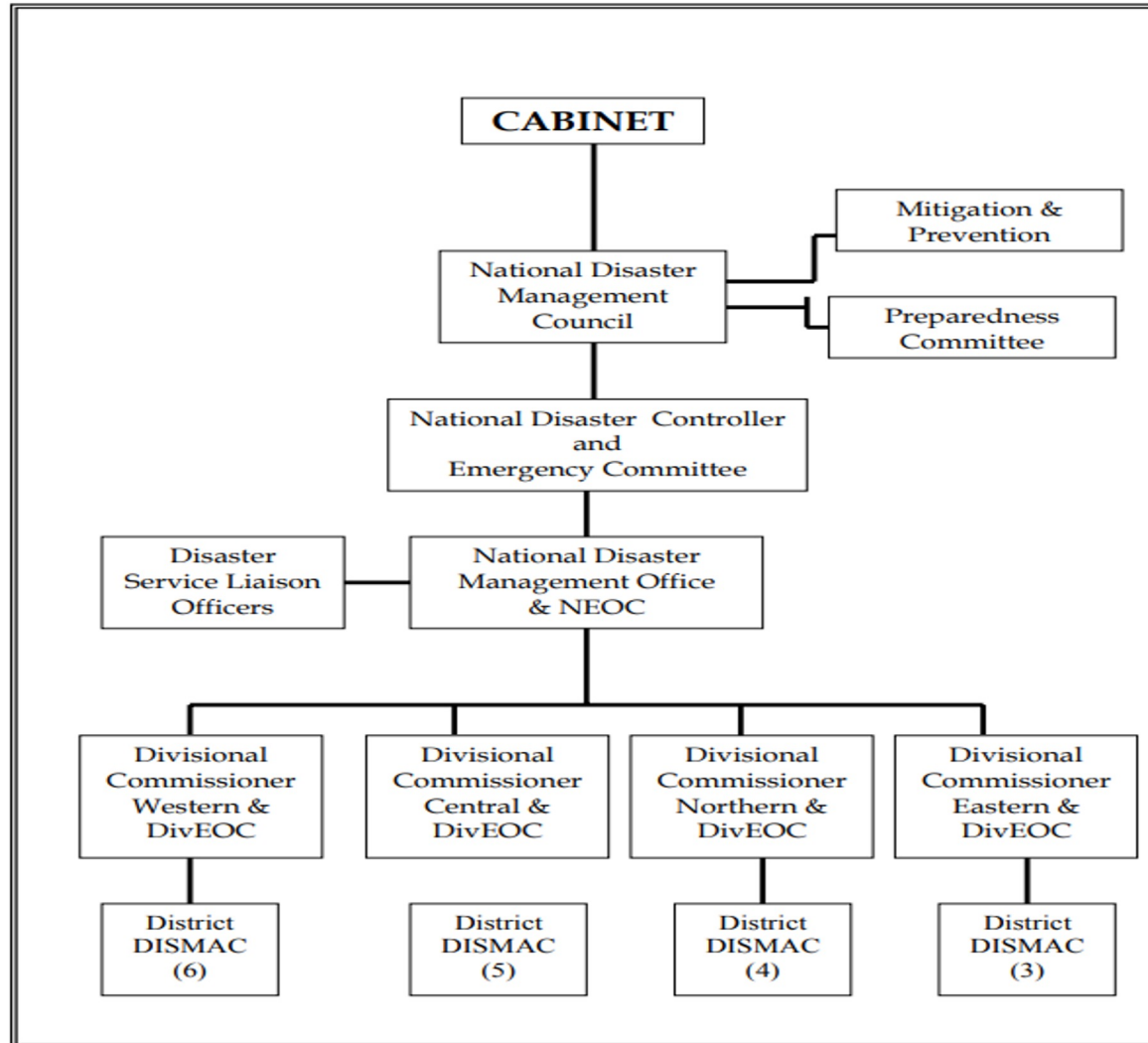
- 1. Guiding international, regional and national policies and mandates**
- 2. DRM Structure**
- 3. Role of NDMO**
- 4. Response Arrangements (slow onset event)**
- 5. Current Tsunami Response Arrangements**
- 6. Tsunami Preparedness initiatives**

NDMO Principles & Policies

- International Alignments:
 - Sendai Framework for DRR
 - Paris Agreement
 - SDG's
 - SAMOA Pathway
- National Policies:
 - NDMA & NDMP
 - National Humanitarian Policy for DRM
 - National Tsunami Response Plan
 - National DRR Policy
 - Draft Drought Plan



DISASTER MANAGEMENT STRUCTURE



Role of the NDMO

- The National Disaster Management Office was established as the coordinating arm of the Fiji Government in times of natural disasters.
- The Office is governed under the Natural Disaster Management Act 1998 and the National Disaster Management Plan 1995 (both currently under review).
- These policy instruments detail the authority, establishment and boundaries for the NDMO to work in building national disaster management capacities that would allow for the successful implementation of national disaster management programs and in due course, establish the framework and platform for building disaster resilience at all levels in the economy i.e. at the national, divisional, provincial, district, village/settlements and to individual household units.

Stage 1: ALERT (White)

NATIONAL LEVEL

- The NEOC will be activated, initially during office hours, to coordinate information and provide operational support.
- The general public and specific communities at risk will be informed of the disaster threat and of counter measures to be taken. Information will be prepared by NEOC for distribution through relevant channels, in particular national broadcasting
- The Emergency Committee of NDMC will convene to review preparedness arrangements, and prepare for coordinated disaster response.
- Each of the Agencies will take necessary precautions in line with their agency disaster plans.

DIVISIONAL LEVEL

- The DivEOC will be activated, initially during office hours to coordinate information and provide operation support
- Agencies and the population at risk will be warned through the relevant channels.
- The Divisional Disaster Management Council will convene to review preparedness arrangements, and prepare for coordinated disaster response.
- Each of the Agencies will take necessary precautions in line with their agency disaster plans.

DISTRICT LEVEL

- The District Emergency Operations Centre will be activated, initially during office hours to coordinate information and provide operational support
- Agencies and the population at risk will be warned by the District Officer through relevant channels
- The District Disaster Management Council will convene to review preparedness arrangement, and prepare for a coordinated disaster response
- Each of the Agencies will take necessary precautions in line with their agency disaster plans

Stage 2: WARNING (Yellow)

NATIONAL LEVEL

- The NEOC will be operational on a 24 hour basis, to coordinate information and provide operational support.
- The general public and specific communities at risk will continue to be informed of the disaster threat and of counter measures to be taken. Information will be prepared by NEOC for distribution through relevant channels.
- Each of the Agencies will inform their staff, put people on stand-by and take necessary precautions in line with their agency disaster plan.

DIVISIONAL LEVEL

- The DivEOC will be operational on a 24 hour basis to coordinate information and provide operational support
- Agencies and the population at risk will continue to be informed of the threat through the relevant channels
- Each of the Agencies will inform their staff, put people on stand-by and take channels. necessary precautions in line with their agency disaster plan.

DISTRICT LEVEL

- The District Emergency Operations Centre will be operational on a 24 hour basis to coordinate information and provide operational support.
- Agencies and the population at risk will continue to be informed of the threat through the relevant channels.
- Each of the Agencies will inform their staff, put people on stand-by and take necessary precautions in line with their agency disaster plan.

Stage 3: ACTION (Red)

NATIONAL LEVEL

- National Disaster Controller has the government resources at his disposal.
- He can instruct Agencies to make equipment and manpower available for specific emergency operations.
- The emergency operation is coordinated through the Emergency Committee of NDMC, with possible requests by the NEOC to agencies for immediate action.

Divisional level

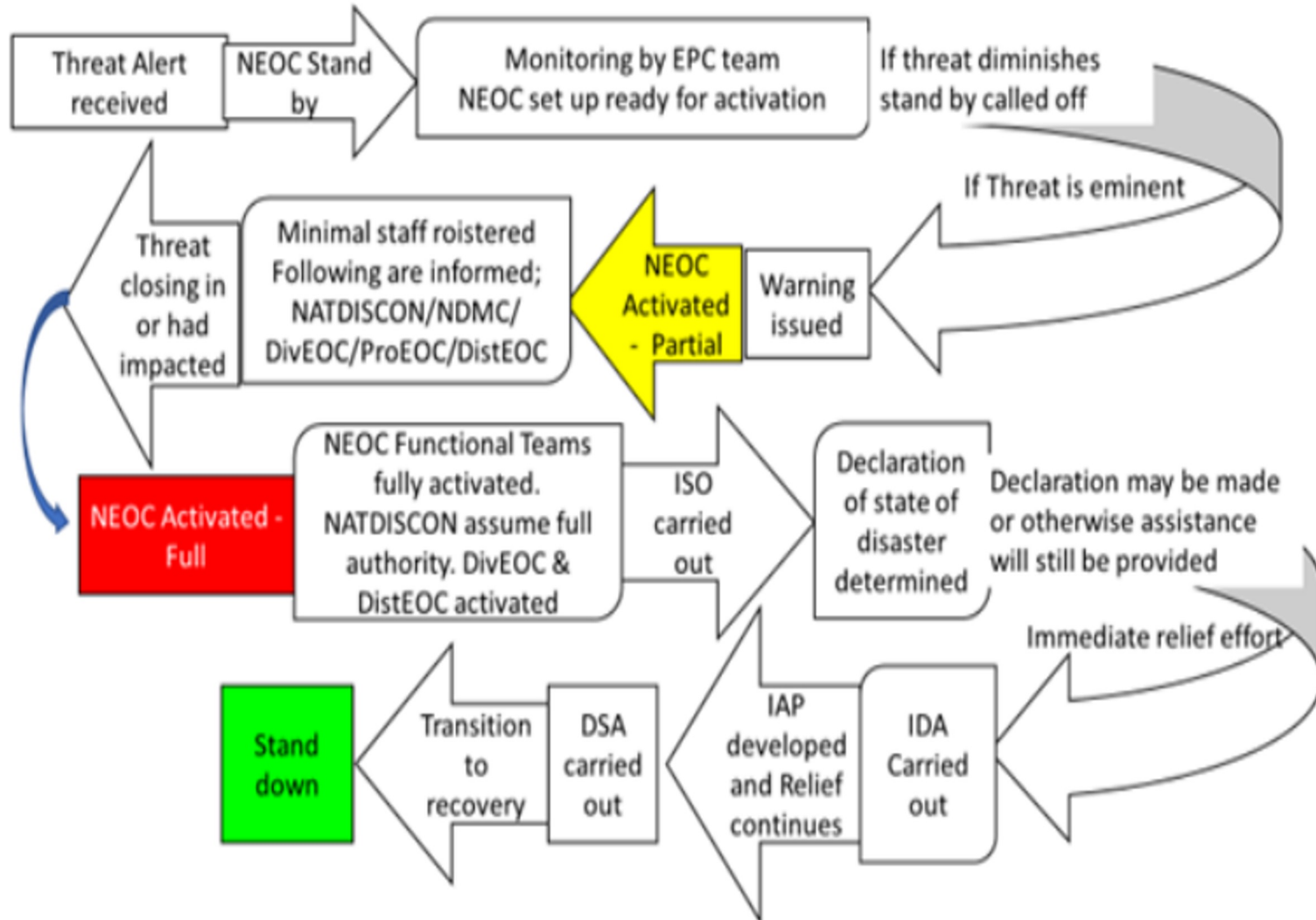
- Divisional Commissioner, can instruct Agencies, at Divisional level, to make manpower and equipment available.
- The emergency operation is coordinated by the Commissioner through the Divisional Disaster Management Council, with possible direct requests from the Emergency Operations Centre to agencies for immediate action.

Stage 4: STEP DOWN (Green)

Stage 4 will be activated when, according to the National Disaster Controller, the emergency operation, with its associated activities and responsibilities can be terminated and when relief and rehabilitation activities can be implemented under normal government rules. This will be no longer than two weeks after the start of Stage 3, except with specific approval from Cabinet.

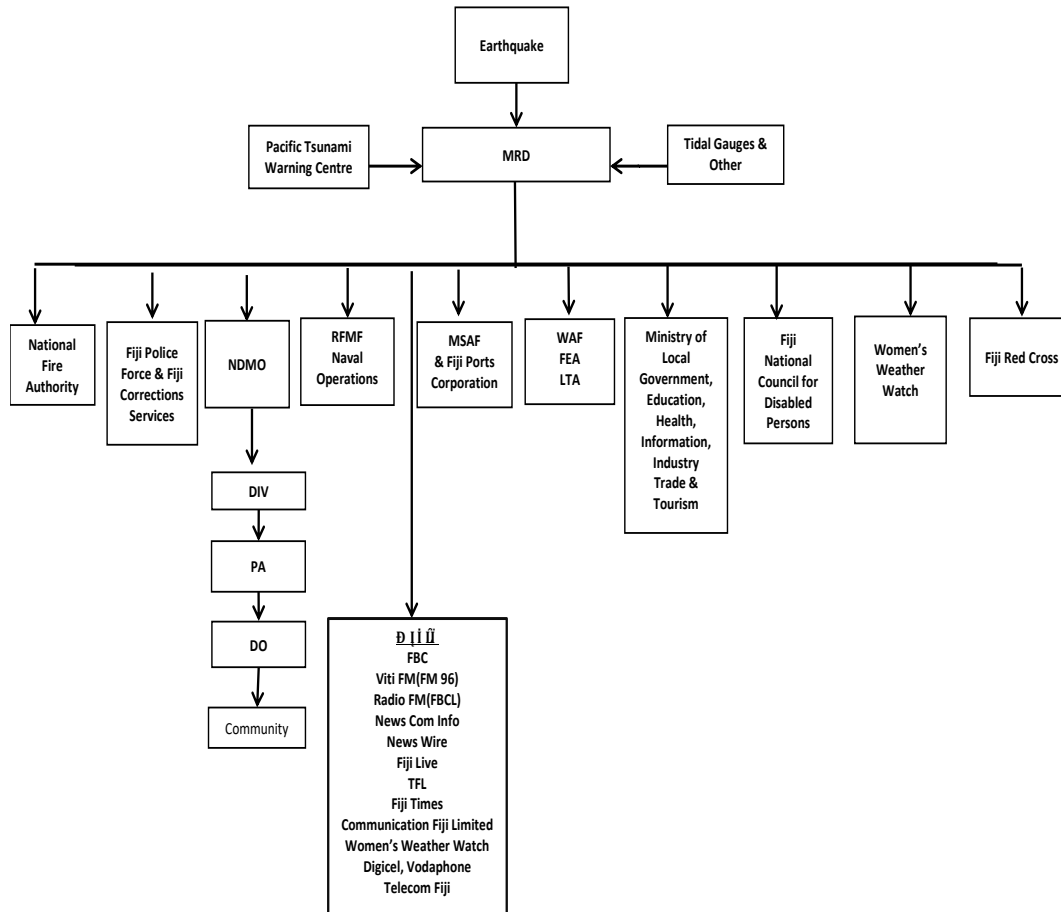


NEOC Activation Procedures Flow



Tsunami message flowchart

MRD TSUNAMI MESSAGING FLOWCHART



- After an earthquake, MRD takes 3 steps to technically evaluate tsunami danger for Fiji:
 - (a) Verifies earthquake strength & position
 - (b) Measures whether tsunami is generated
 - (c) Assesses the tsunami threat for Fiji.
- MRD then issues notices and warnings by email to NDMO, Key Responding Agencies and Media.
- All Key Responders then activate their Tsunami SOPs for staff and people within responsibility (e.g. Students, patients, passengers, guests, visitors, contractors, communities at large).
- Standardised public warnings and updates will be issued via radio, TV, community radio, and SMS blasts.

TSUNAMI WARNING SYSTEMS

Step 1: NDMO Activation of NEOC and Divisional EOCs	Step 2: Agency Warning Systems	Step 3: Tsunami Warning Sirens in Suva
<p>When a Tsunami Threat Message is received from the MRD, the NDMO Director will immediately order activation of the National Emergency Operations Centre (NEOC) and Divisional Emergency Operation Centres (EOCs), which in turn will notify District Officers, Provisional Administrators, Turaga ni Koro and Advisory Councilors and communities of tsunami warnings. In case where the NDMO Director is not available, the Principal Disaster Management Officer will be responsible.</p>	<p>When Agencies receive a Tsunami Threat Message from the MRD, each Agency is responsible for warning subsidiary or associated Agencies, departments, staff, students, and people under its duty of care in accordance with its respective Tsunami Response Plan, and in alignment with the National Disaster Response Plan</p>	<ol style="list-style-type: none"> 1. NDMO is responsible for the operation, site selection, installation and maintenance of Tsunami 2. Warning Sirens in places of high coastal density. In Suva, has installed 15 tsunami siren are installed. Sirens will be progressively installed in other locations of high population density. 3. When the NDMO receives a Tsunami Threat Message from the MRD, the NDMO Director will assess the situational threat to Suva and activate Tsunami Warning Sirens if required. 4. The NDMO Director will de-activate the Tsunami Warning Sirens once a final Tsunami Threat message has been received and in accordance with other disaster management considerations, such as the coordination of population movements with other agencies or the need for movement restrictions. 5. NDMO will activate the tsunami warning sirens at least twice annually for maintenance, testing, public drill or educational purposes, provided that prior notification of maintenance or drill has been given to Agencies 6. Siren activation will not to exceed 10 minutes



Tsunami Response Coordination

- MRD is responsible for the technical assessment of tsunami threats and issuing Earthquake Threat Messages and Tsunami Information Messages.
- However, NDMO is the lead agency in all aspects of tsunami response.
- MRD and NDMO will collaborate closely during tsunami threat periods to ensure optimal co-ordination of required public evacuations by NDMO and other agencies in accordance with this Plan.
- When a Tsunami Threat message is sent by email to NDMO outside normal government office hours, MRD will also immediately phone the NDMO Director for acknowledgment that the message has been received.
- During periods when the NDMO Director will not be contactable, an alternative contact point within the NDMO may be assigned and contacted by phone.
- The Directors of the MRD and the NDMO are personally responsible to ensure that the mobile contact details of the NDMO Director and the alternative contact point are current at all times.
- When evacuations have occurred as a result of a tsunami threat, the final 'All Clear' Message will not be released without express authorization of the NDMO Directors or delegate.
- This is to ensure NDMO to coordinate orderly public returns or to activate additional national emergency measures if required in accordance with prevailing conditions.



TSUNAMI SIRENS LOCATION MAP



Tsunami Extension Project

- Through the Government of Japan's Grant Aid the Ministry is able to extend the tsunami siren coverage to cover the western Viti Levu coastline.
- A total of 26 additional tsunami sirens will be installed from the southernmost point of Nasamila District School in Tailevu, to Lautoka City
- Site selection is based on the following three criteria:-
 - **Population density:** All homes within the 20m tsunami hazard zone in Fiji were mapped, then the high-density areas were identified. These gave high density hazard zones;
 - **Key infrastructure location:** _such as schools, hospitals, community halls that would present a high-density population; and
 - **Tourism locations:** concentration of tourism activity

SRL	SITE	SRL	SITE
1	Nasamila Primary School Compound, Nasilai/Kiuva, Tailevu	14	Korolevu Government Station Compound, Baravi, Nadroga
2	Rewa Provincial Council Office Compound, Lomanikoro, Rewa	15	Maui Bay Compound, Baravi, Nadroga
3	Nadawa Garment Factory Compound, Nadawa, Nasinu	16	Vatukarasa Village Compound, Baravi, Nadroga
4	Fiji Navy HQ Compound, Nakula Street, Lami	17	Outrigger Resort Compound, Korotogo, Nadroga
5	Muaivuso Village Compound, Navakavu, Lami	18	TFL Tower, Sigatoka Town
6	Kalokolevu Village Compound, Navakavu, Lami	19	Fijian Resort Compound, Cuvu, Nadroga
7	Navua Hospital Compound, Namelimeli, Navua	20	Natadola Golf Club Compound, Nadroga
8	TFL Tower, Navua Town	21	InterContinental Resort Compound, Momi, Nadroga
9	Deuba District School Compound, Deuba, Serua	22	Rendezvous Resort Compound, Nabila, Nadroga
10	TFL Tower, Pacific Harbour, Deuba	23	Sonaisali Resort Compound, Nadi
11	Ministry of Fisheries Office Compound, Lomary, Serua	24	Denarau Island Resort Compound, Nadi
12	Serua Island Village Compound, Serua	25	Vuda Top Veiseisei
13	Namatakula Village Compound, Baravi, Nadroga	26	Lautoka City TFL Tower

SIREN COVERAGE SUMMARY MAP

SUMMARY

APPROXIMATE HOUSEHOLD SUMMARY - 70,429
APPROXIMATE POPULATION COVERED - 311,603
SCHOOLS COVERED - 307
RESORT COVERED - 144
HEALTH FACILITY COVERED - 24

NATADOLA - LAUTOKA WHARF

MAUI BAY - SOFTEL

KIUVA - KOROLEVU

Legend

ZONES SUMMARY

ZONES

- VERY HIGH RISK ZONE
- HIGH RISK ZONE
- SAFE ZONE
- Hotels
- Schools
- Health_Facilities
- FRA_Roads
- Fiji_Islands





NDMO

ITS ALL ABOUT GOVERNANCE



@FijiNDMO



@FijiNDMO



@ndmo_fiji

Vinaka

