



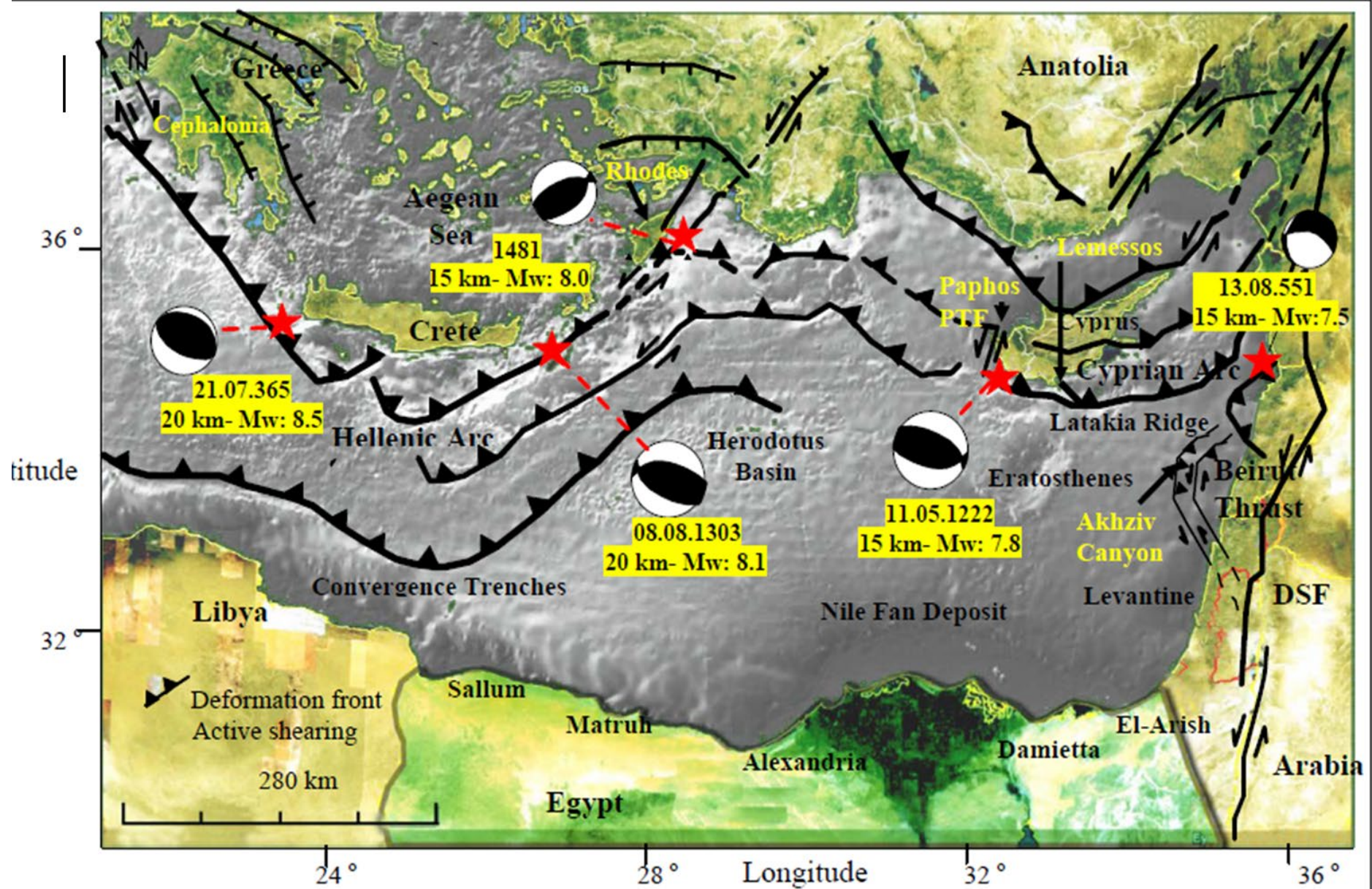
IOC-UNESCO EU DG-ECHO CoastWave Project Workshop

National Tsunami Warning Chains and SOPs

Prof. Amr Hamouda

President of NIOF - Egypt

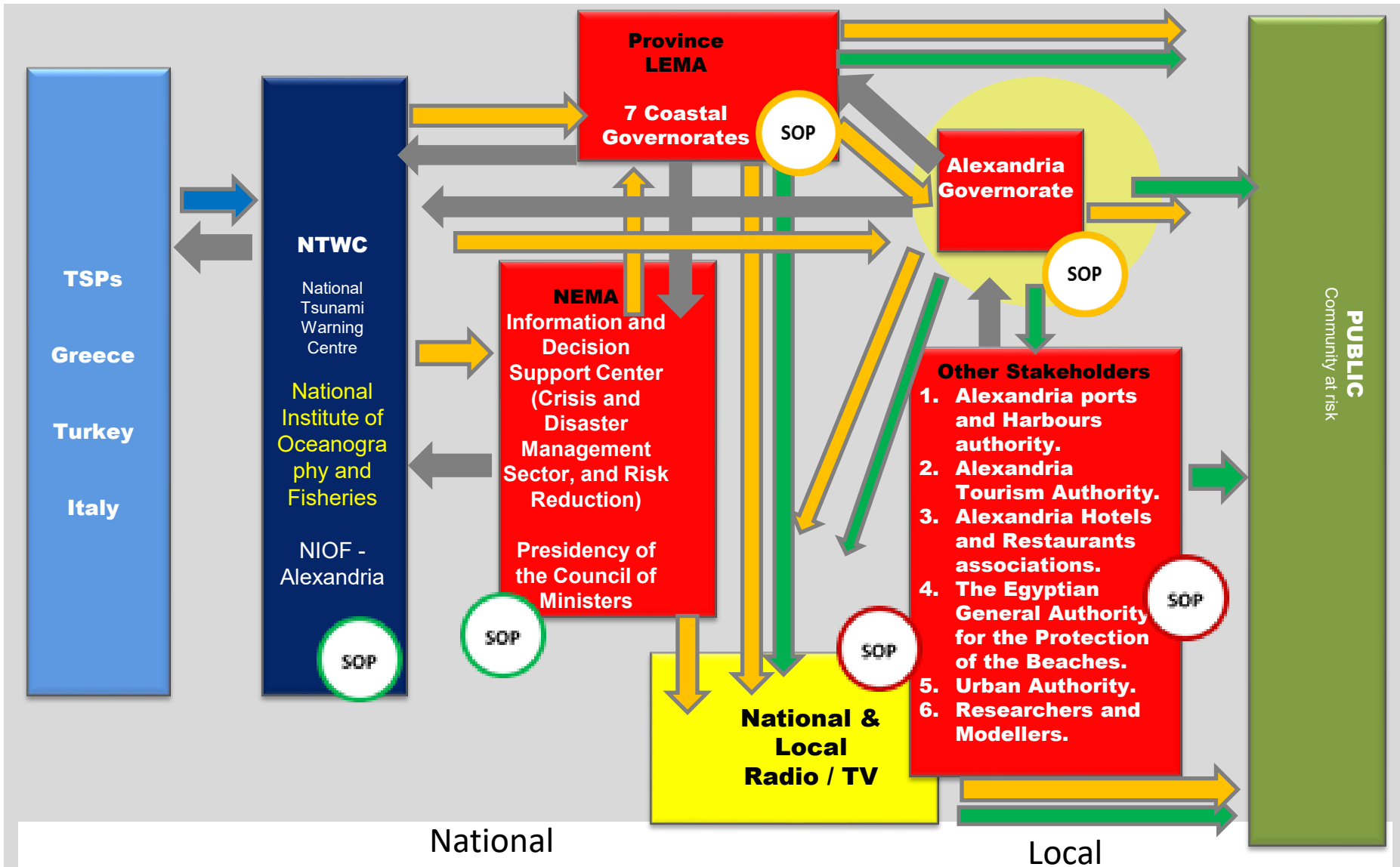




5 Min

7 Min

Timeline for the first warning message in case of near-field threats (Minutes after EQ)



Information

Warning

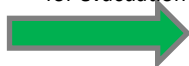
Warning and Advice

Official call for evacuation

Feed Back

National

Local

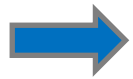




Colour Codes and Definitions

Colour code

Definition



TSP Information to NTWC



Warning by NTWC (without advice attached): seems that this is currently not practised in the NWIO countries



Warning and Advice issued by NTWC: ideally agreed upon with NDMO. Content of advice depends on the respective warning level



Official call for evacuation issued by mandated authority: this implies a separate decision making process by the respective authority and issuing a specific message which includes warning information and a call for evacuation in case it is required



Feedback information between NTWC and TSP or between other institutions involved in the warning chain

The **Timeline** indicates the targeted deadline to send out the **first warning message** by NTWC and the time when it should arrive at the community at risk **in case of a near-field threat**

SOP legend

- SOPs complete and tested



- SOPs partially complete



- SOPs not started

