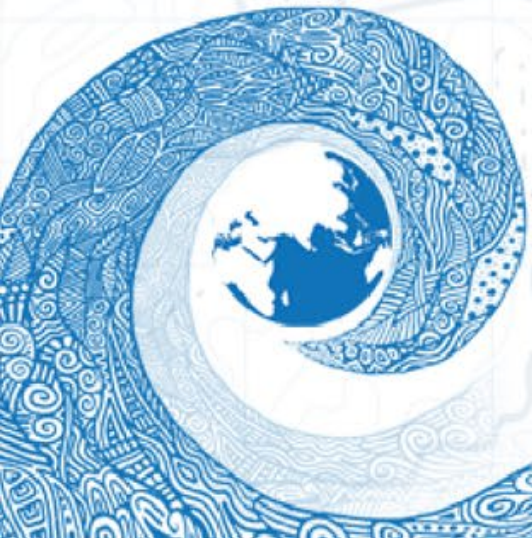


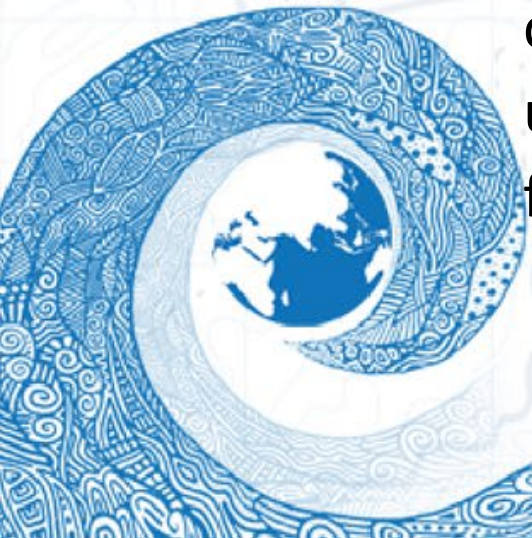
# First regional Workshop On Tsunami Inundation Mapping (TIM)

*Jörn Lauterjung, International Consultant*



# Objectives

- Through this regional workshop it is intended to kick-off a joint working process among the five partner countries and the project team to identify the requirements for tsunami inundation modeling and mapping in the region. During the workshop the following shall be achieved:
  - Getting to know each other and develop partnership arrangements. The establishment of a Regional Working Group on Tsunami Inundation modelling and mapping has been proposed as a mechanism to facilitate national implementation of the project activities. National working groups could be formed and should involve representatives from agencies, universities and research institutions, but also the local level, preferably from the community Pilot Areas.



# Objectives

- Discussion and sharing of knowledge on concepts, methodologies and approaches for tsunami inundation modeling in order to build a common understanding and joint strategy among the participants. Partner countries are invited to share their experiences and skills of tsunami inundation modelling.
  - Discussion of an approach for a gap analysis in each of the five countries.
  - Outlook on further activities to be undertaken under the framework of the project and agreements on next steps.

