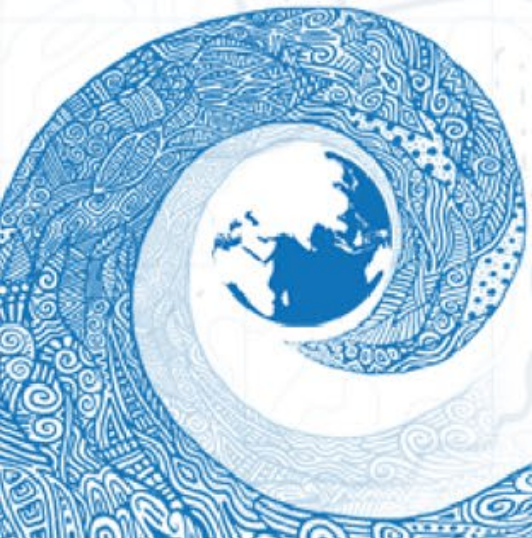


First regional Workshop On Tsunami Inundation Mapping (TIM)

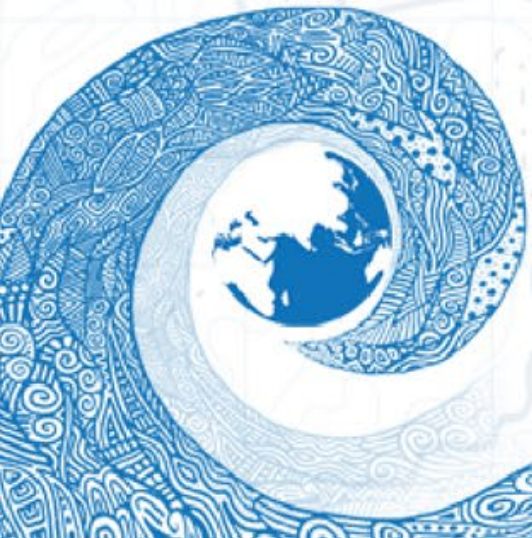
Jörn Lauterjung, International Consultant



Background

Tsunami inundation mapping has been identified as one of the priority topics to be addressed in the five partner countries in the NWIO region in order to improve evacuation planning and tsunami preparedness.

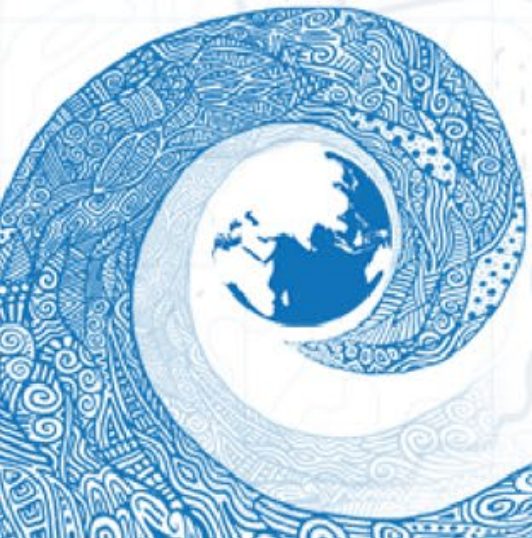
- The Project will support the finalisation of the PTHA model (V1.0).
- Scientific Meeting to share the PTHA results with the region for adoption
- Report on latest regional/international studies on the tsunami hazard in the Makran subduction zone.
- Establishment of a NWIO Regional Working Group on Inundation Modelling to foster ongoing regional cooperation and exchange of knowledge on inundation modeling and mapping.
- A gap analysis of tsunami inundation mapping capabilities in the region.
 - The regional group should develop a unified methodology for tsunami inundation modelling in order to assure inter-comparable results throughout the region.



Questionnaire

First and rough overview on the prerequisites and conditions in the participating countries

- Two main groups:
 - Input data for modeling/mapping
 - Other Information
- First group:
 - Shallow water bathymetry
 - Digital Elevation Models
 - Digital land use information, development information, zoning maps
 - Hazard information for pilot regions



Questionnaire

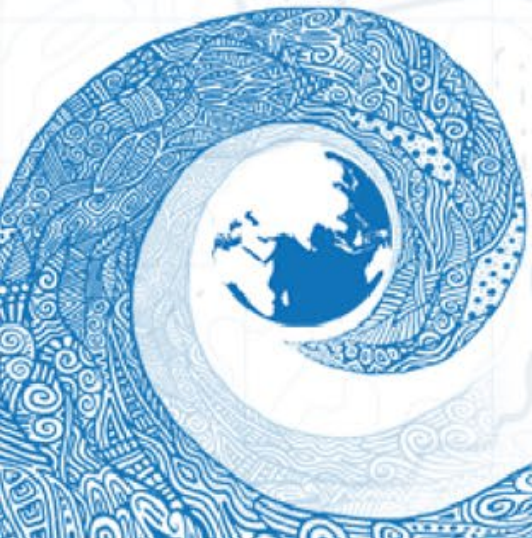
Received questionnaires from India, Iran, Pakistan and UAE
First quick results

Shallow water bathymetry

GEBCO used in most countries plus local
(higher resolution) data in some regions

Digital Elevation Models

Available in most places, resolution 5-10m



Questionnaire

Received questionnaires from India, Iran, Pakistan and UAE

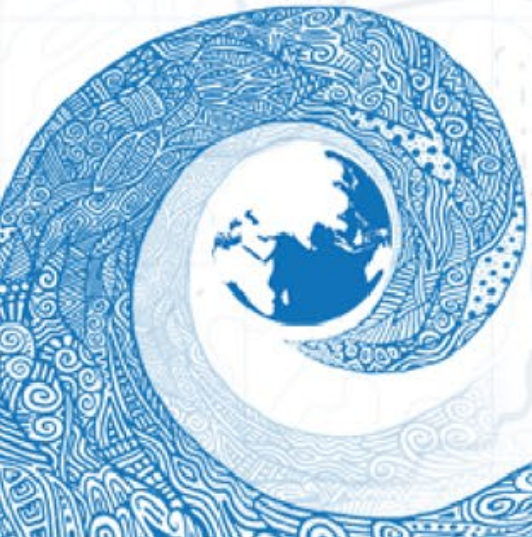
First quick results

Digital land use information Heterogenous availability

Development information

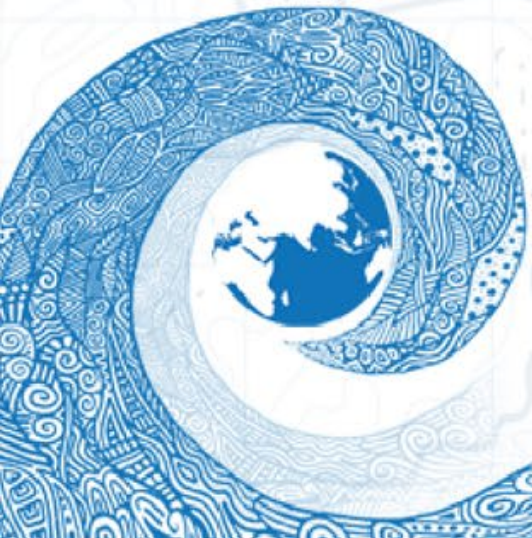
Zoning maps

Hazard information for pilot regions Heterogenous, wait for PTHA



Next Steps

- Close cooperation with the Tsunami Evacuation Planning (TEP) Group
- Definition of pilot areas in the frame of the UNESCAP project for Evacuation planning and Inundation Mapping/Modeling
- Definition of the requirements to perform the respective inundation modeling in the pilot areas. Gap analysis on the basis of the requirements.
- Discussion and definition of tools
- Science Workshop with international experts
- Strategies of Inundation modeling for Tsunami Risk assessment



Timeline

Regional Science Exchange Meeting

End of October

Tsunami Ready Symposium (Bali)

22-25 November

UNESCAP Evacuation Planning Workshop (Bali)

23 November

ICG Meeting (Bali)

28 Nov-1 Dec

