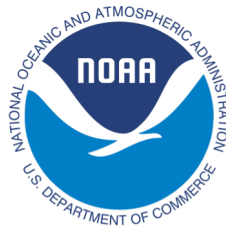


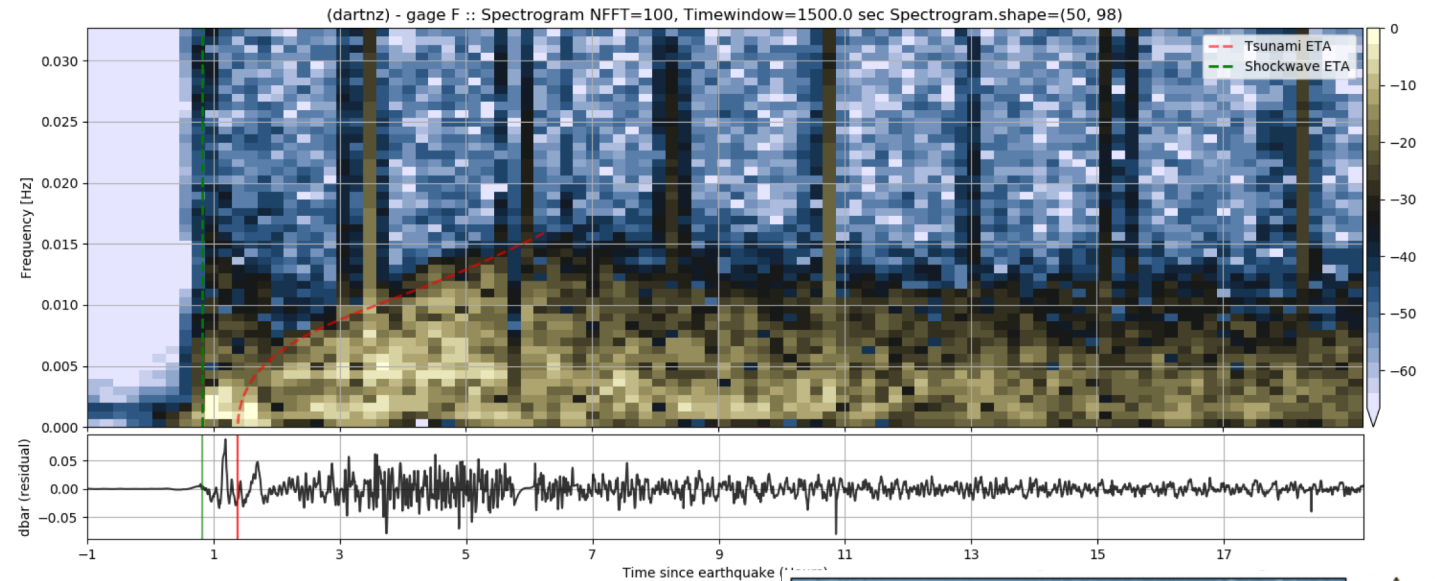
Volcano activity update

Bill Fry, Charles McCreery (WG2) and Geoff Kilgour

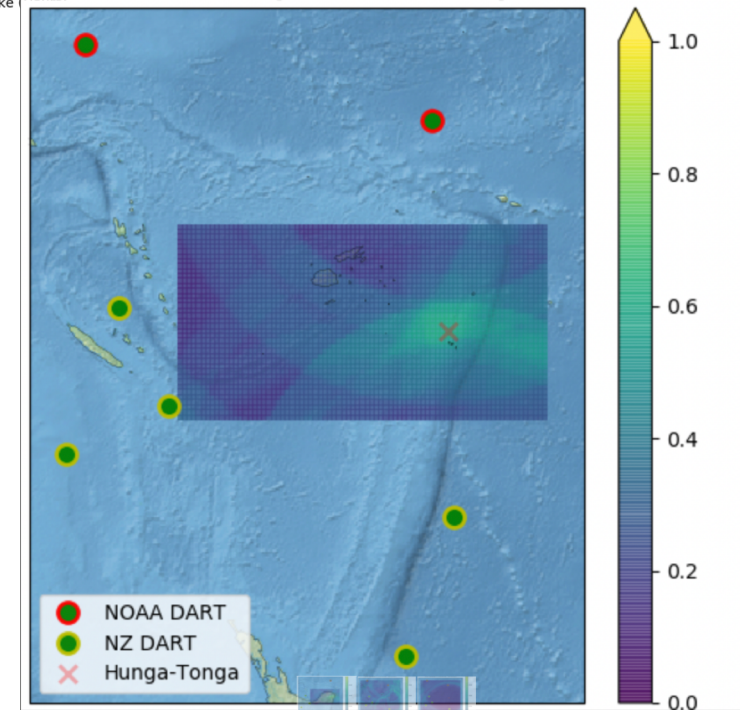


Te Whakaahuatanga Tere o ngā
R-CET
Rū Whenua me ngā Parawhenua

15 January tsunami, new insights

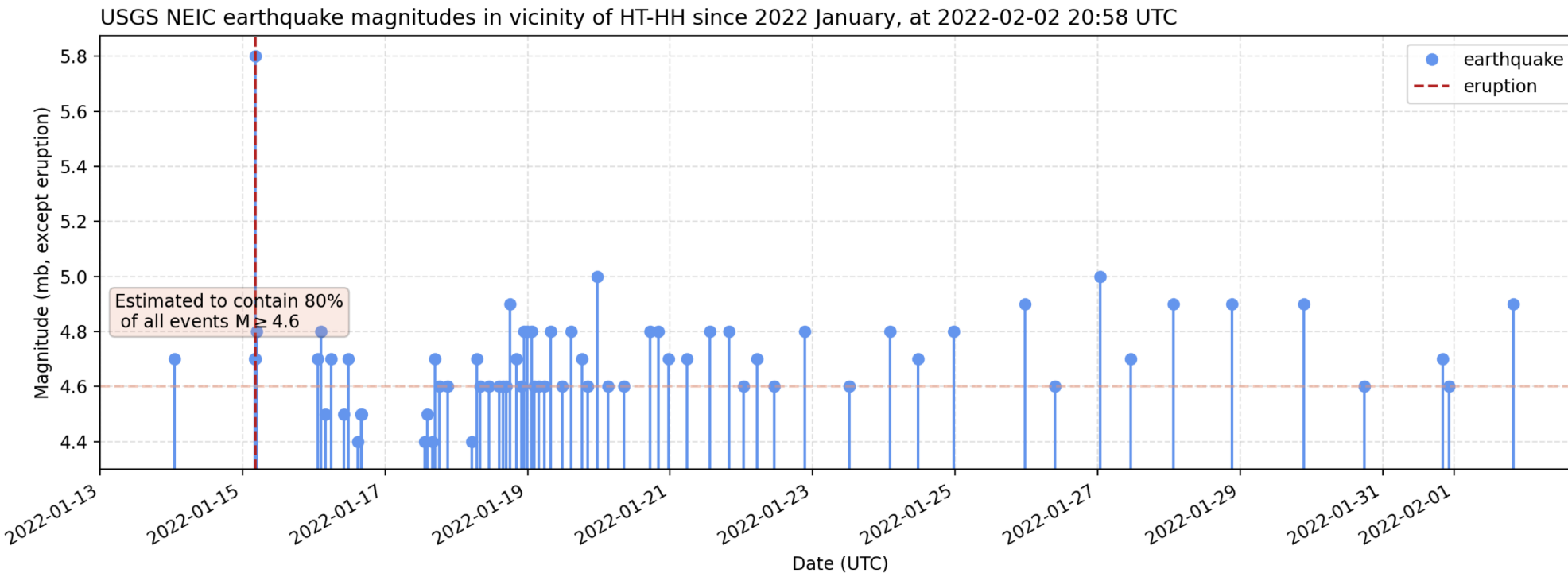


- There were likely multiple causes of the tsunami and these are not still fully understood
- The atmospheric pressure wave contributed to the measured tsunami
 - Affected regional and trans-Pacific coastlines more than local (<1 hour travel times) ones.
 - Volcanic evidence cannot be used to predict whether or not there will be another explosive eruption



Figures courtesy A. Jamelot (CPPT)

- No evidence of further volcanic eruptions has been observed **in the last 21 days**
- ~80 shallow earthquakes $>M4.5$ in the area since beginning of January
- Volcanic ash chemistry from 15 January samples suggest a very recent source with implications for possibility of continued explosive eruptivity



Volcanic
update

Summary of volcanic update

- No change in advice from Debrief II
- No evidence to suggest heightened volcanic unrest since January 19.
- Further tsunamis originating from HTHH are possible and not predictable
- Regional TWS should maintain heightened awareness
- Remote monitoring continues both for deformation, gas, and visual via satellites