



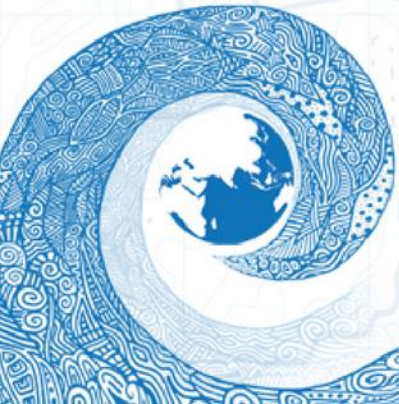
United Nations
Educational, Scientific and
Cultural Organization



Intergovernmental
Oceanographic
Commission

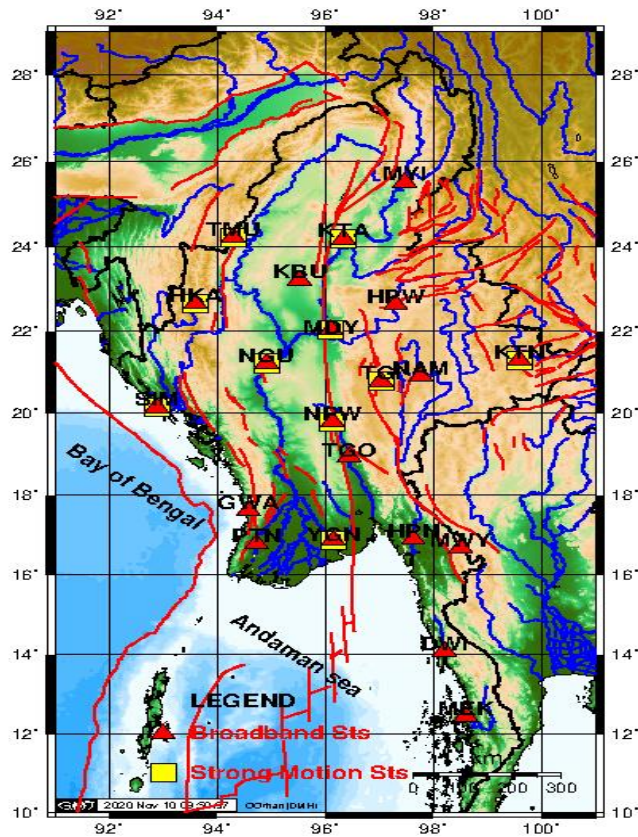
Member State Report for *Country Myanmar*

Intersessional Meeting of the ICG/IOTWMS November 2021



Activities

Seismic Network in Myanmar

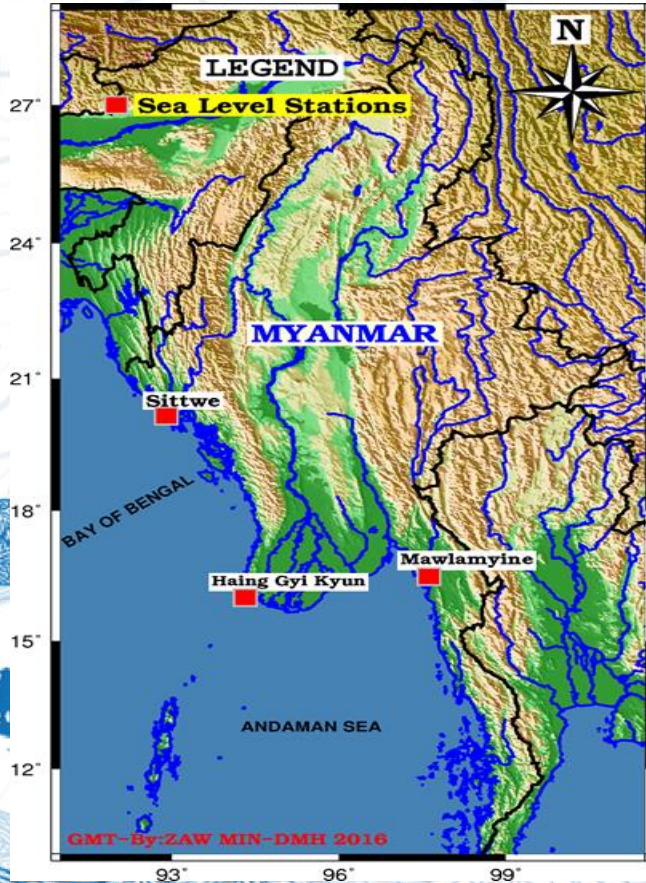


- 2 – Analog Stations
- 21 – Broadband Stations
- 10 – Strong Motion Accelerograph

Activities

Tide Gauge Stations

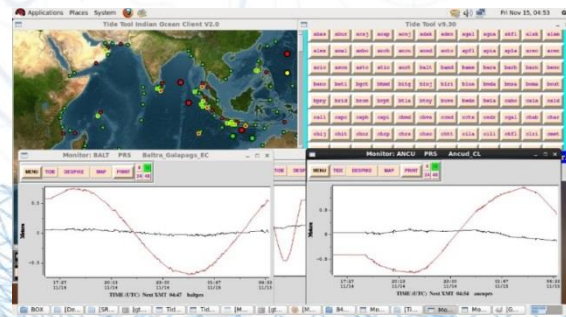
Two sea level tide gauges were installed at **Sittwe** and **Mawlamyine** during 2006 from UNESCO/IOC project with Myanmar.



Mawlamyine



HaiGyiKyun tide gauge was installed in October, 2014. (JICA)

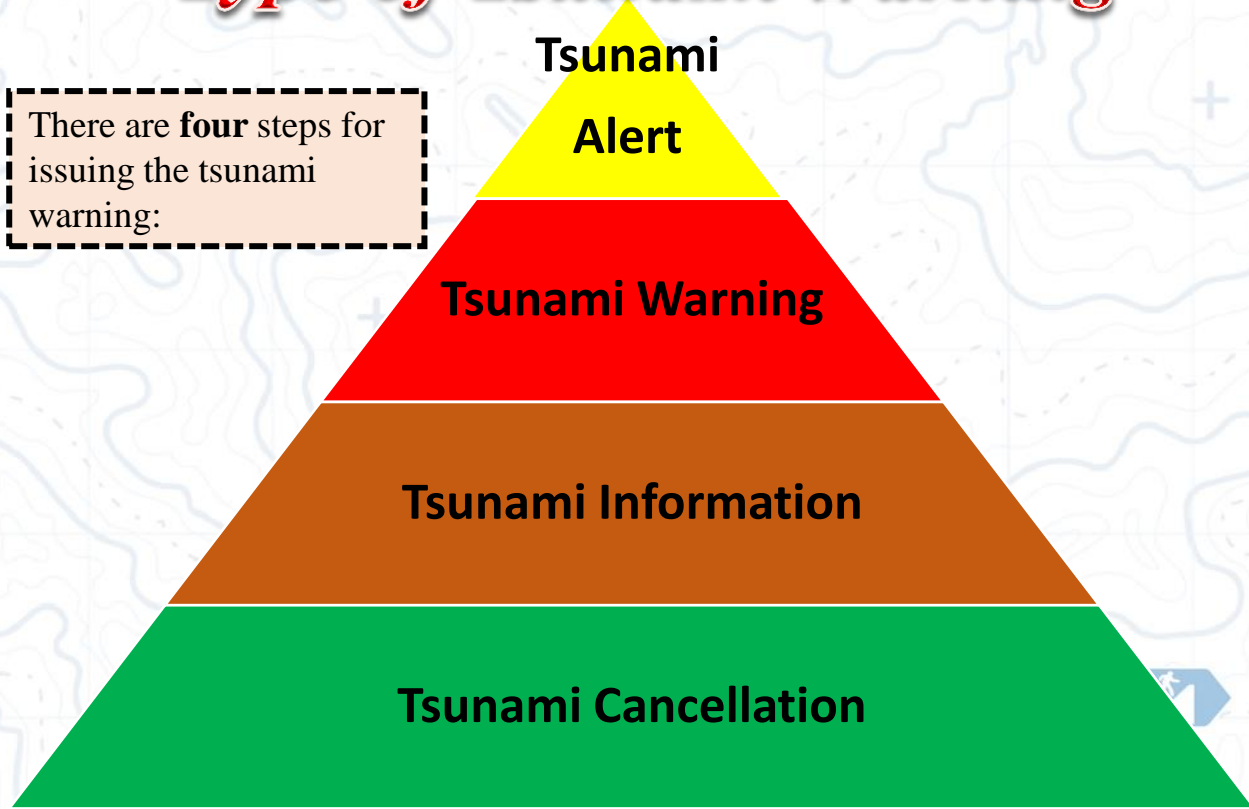


Tide Tool Software

Activities

Type of Tsunami Warning

There are **four** steps for issuing the tsunami warning:



Tsunami

Alert

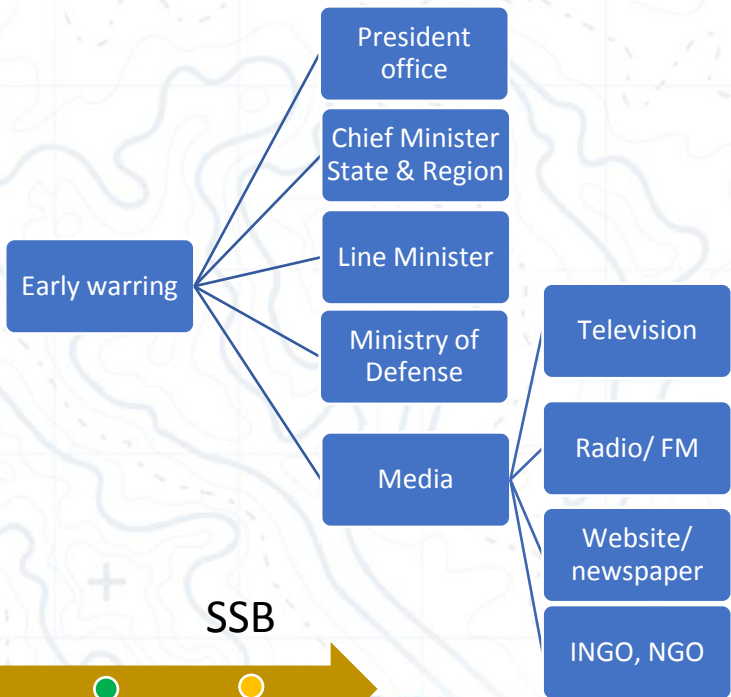
Tsunami Warning

Tsunami Information

Tsunami Cancellation

Activities

EARLY WARNING DISSEMINATION



- City FM
- Mandalay FM
- Pyinsawadi FM
- Thazin FM
- Cherry FM
- Padamya FM
- Shwe FM



Official Facebook

Activities

To Reduce Tsunami Disaster in Myanmar

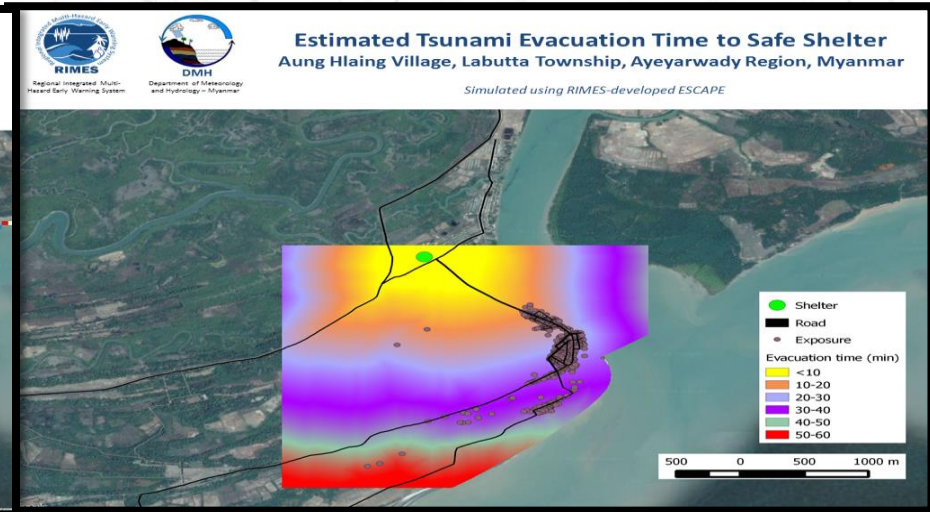
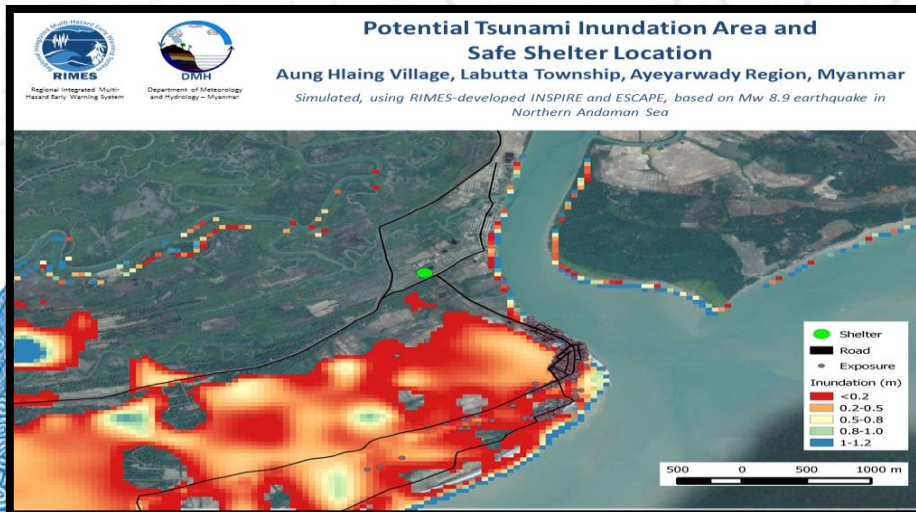
- Conducted IOWave09 Exercises with UNESCO/IOC and also conducted all of IOWave Exercises.
- Two Times per year of communication test for Tsunami Warning with other Indian Ocean Countries since March 2011.



Activities

To Reduce Tsunami Disaster in Myanmar

- Successfully done the “Tsunami Risk Assessment Project” for Aung Hlaing Village, Labutta Township, Ayeyarwady Region with RIMES (supported fund from UNESCAP).



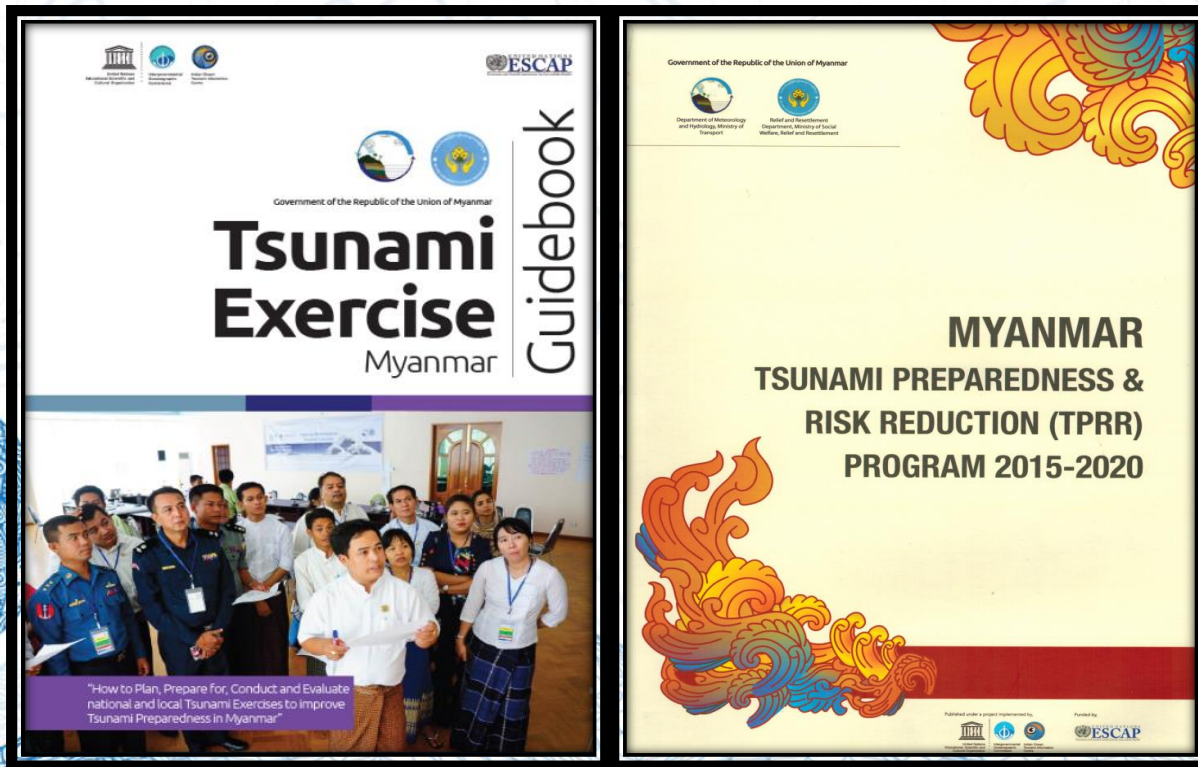
Activities

Tsunami drill was held in Aung Hlaing village, Labutta Township, Ayeyarwaddy Region by using the tsunami risk assessment map of Aung Hlaing on 26 December 2014.



Activities

Tsunami Exercise Guideline and TPRR Program 2015-2020



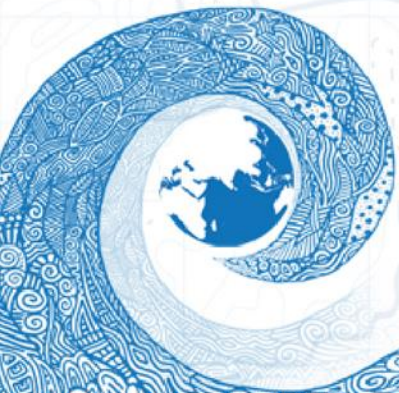
Future Plans

- Need to install more new seismic stations and sea level stations.
- Need to do more cooperation research works with other international organizations.
- Need to get more scholarship and technical training for new staffs.



Issues

- Need technical support to set up Tsunami Database, specially to issue timely warning for local Tsunami
- Need to get technical support to develop Tsunami Risk Assessment Maps for Tsunami Risk Reduction



THANK YOU FOR YOUR KIND ATTENTION!

