

# **NATIONAL WEATHER AND GEOPHYSICS OPERATION CENTRE**

Experiences during Covid-19

**ICG/PTWS Regional WG SCS-X  
28 & 30 September 2021**



# NATIONAL WEATHER AND GEOPHYSICS OPERATION CENTRE

Formerly known as the Malaysian National Tsunami Early Warning System (MNTEWS) was established in 2005



To provide early warning on tsunami generated in the Indian Ocean, South China Sea or the Pacific Ocean that may affect Malaysia.

## DATA COLLECTION

Seismic Stations



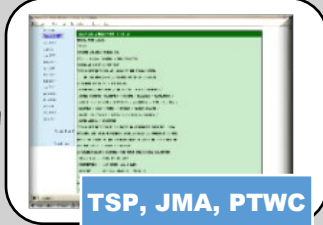
Tide Gauge Stations



Coastal Camera System



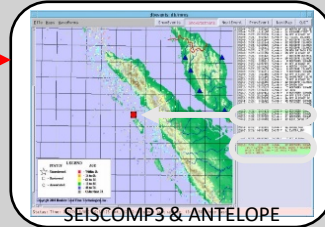
Linkage to international tsunami watch centers



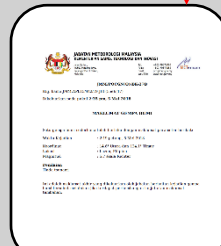
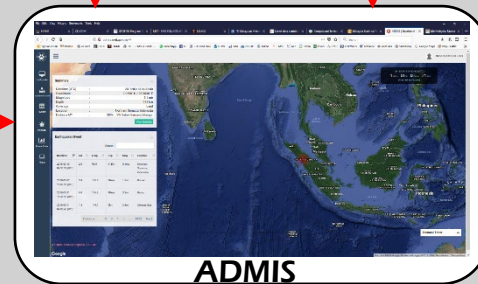
Communication System (VSAT)

## PROCESSING

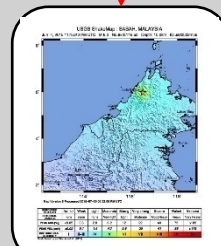
Software Processing



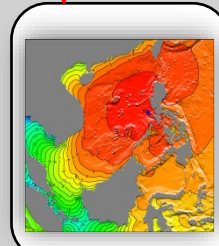
Tsunami Database



Information



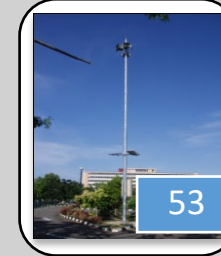
ShakeMap



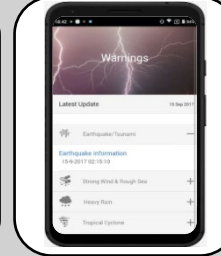
Warning

## DISSEMINATION

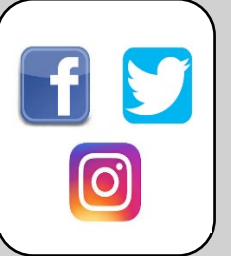
Tsunami Siren



myCuaca app



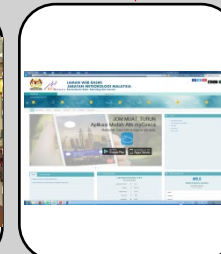
Social Media



Earthquake Information & Tsunami Warning



Mass Media & TV Crawler



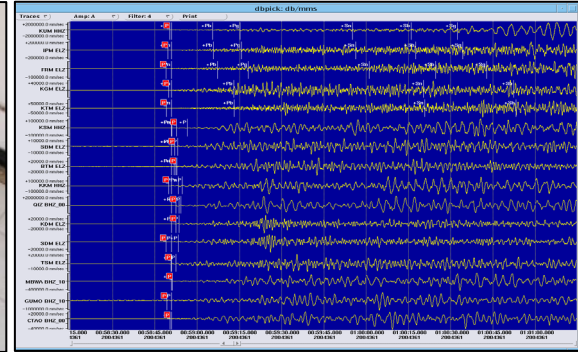
Website & mygempa



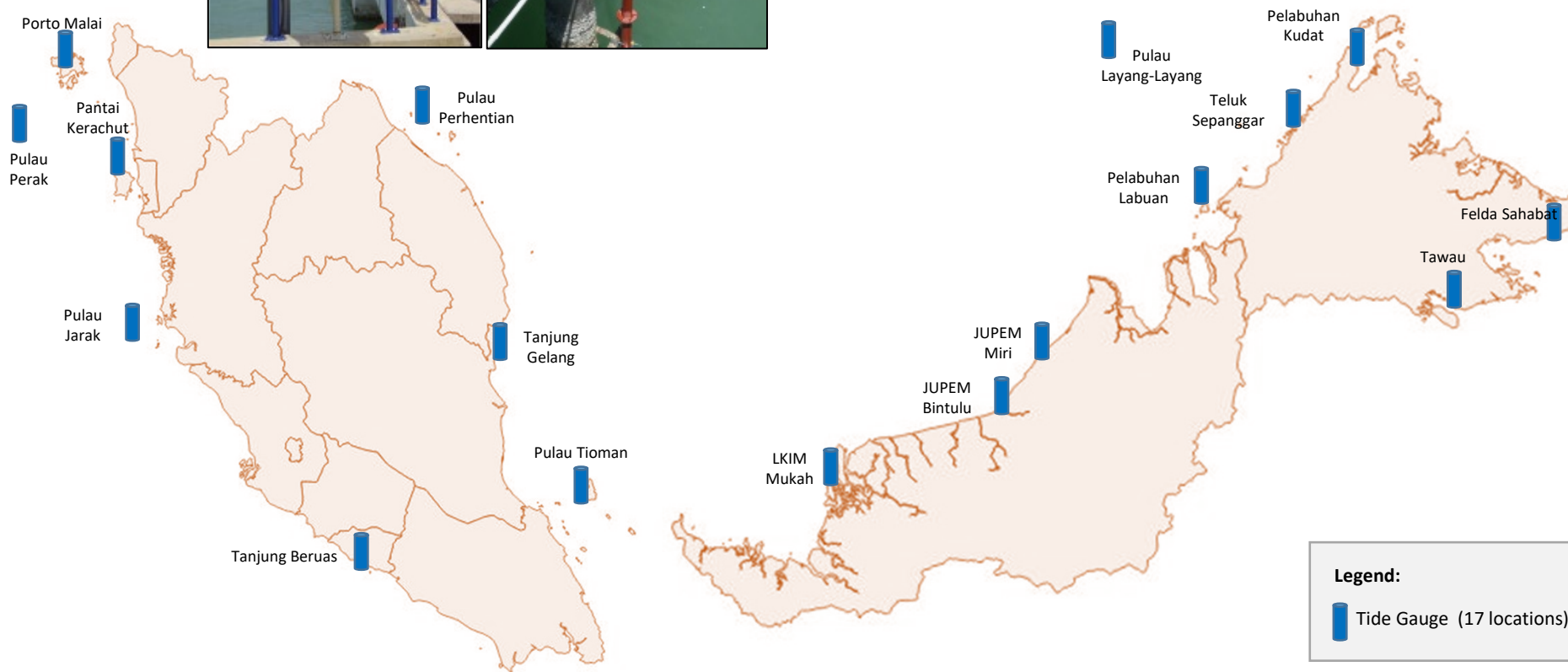
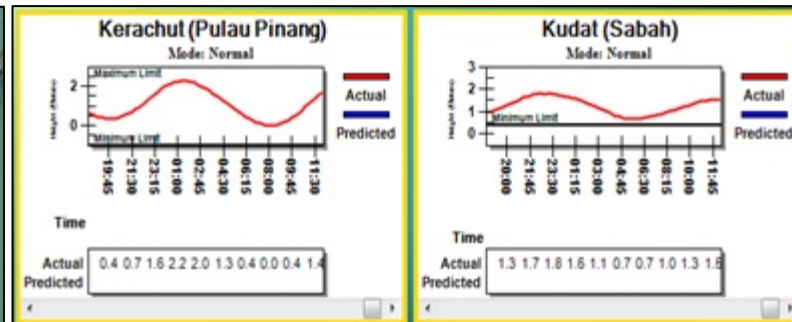
SMS, E-mail & Fax

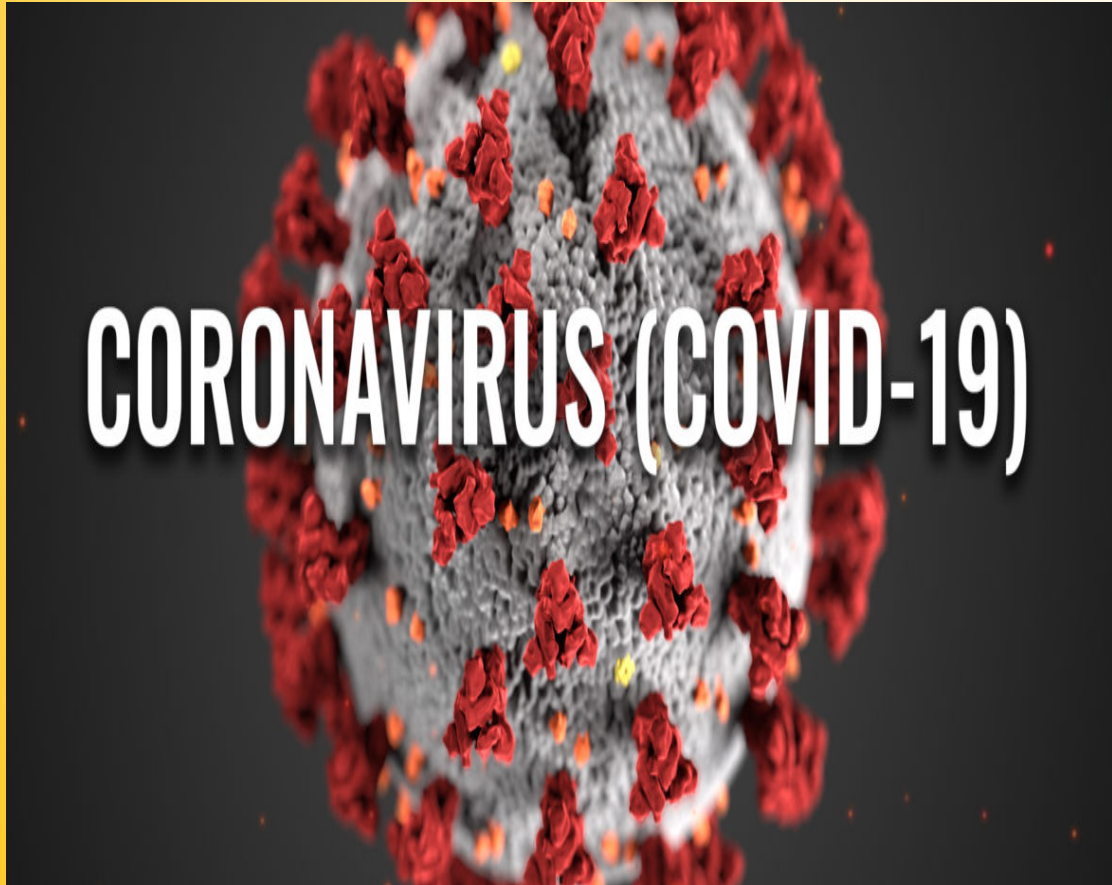


# SEISMIC STATION NETWORK



# TIDE GAUGE NETWORK





The World Health Organization (WHO) on March 11 declared COVID-19 a pandemic, pointing to the over 118,000 cases of the coronavirus illness in over 110 countries and territories around the world and the sustained risk of further global spread.

In response to the surge of cases in March 2020, the Malaysian government imposed a nationwide lockdown known as the Movement Control Order (MCO), which came into effect on 18 March 2020

However, under the Federal Government Gazette, MET Malaysia is under the schedule essential service dan its operations continues throughout.

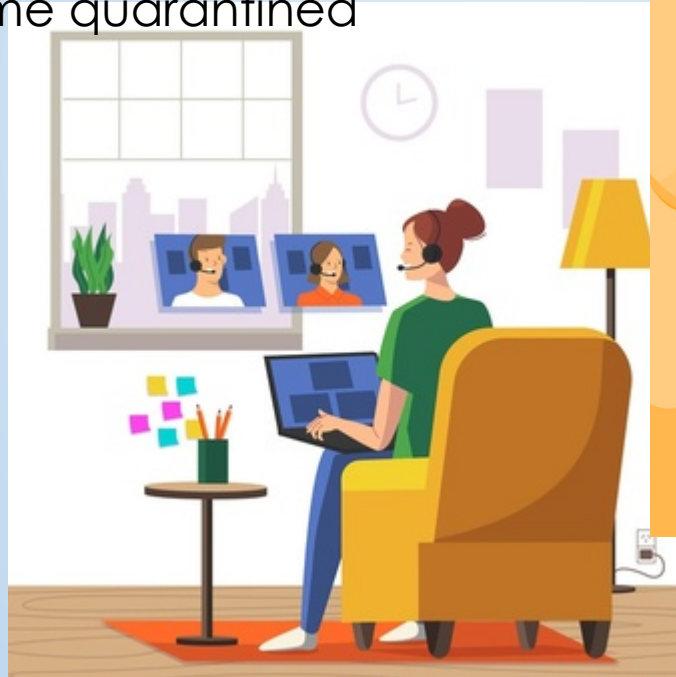


# CHALLENGES

- Operation centre was fortunately able to run continuously until now, however it can be stretched to its limit if any officers were infected and/or quarantined
- Any repair or replacement parts for seismic equipment was deferred especially to Sabah and Sarawak as quarantine of 14 days upon arrival was mandatory at the time
- Any activities that involved groups of people (e.g. Tsunami Drill Exercises or Public Awareness Campaign) was prohibited or deferred. However, Public awareness campaign was conducted via infographic in the Social Media

Under the **Business Continuity Plan (BCP)** through its **Disaster Response Plan (DRP)** a simulation was done for a **SCENARIO** that involved the **closure of the NATIONAL WEATHER AND GEOPHYSICS OPERATION CENTRE** on the **15th October 2020** with the **Work From Home Mode** activated

This simulation was done in order to find if it is feasible for operators to operate from home using a home pc/laptop and a working internet at home especially to the operators who were not infected but suspected and thus home quarantined



This simulation will be repeated for the DRP in the near future



# FINDINGS

- Any WFH needs a stable internet
- Online meetings is still needed even if the pandemic becomes endemic
- WFH is viable for the operations centre if certain conditions are met

**Thank You**

