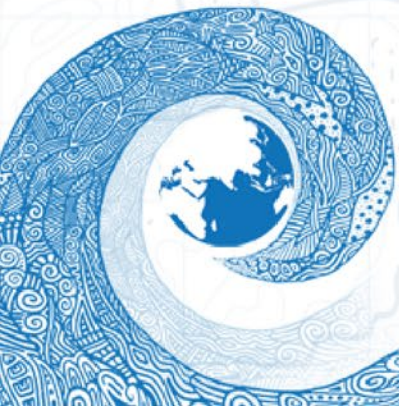


National Tsunami Warning Chains and the role of the Media

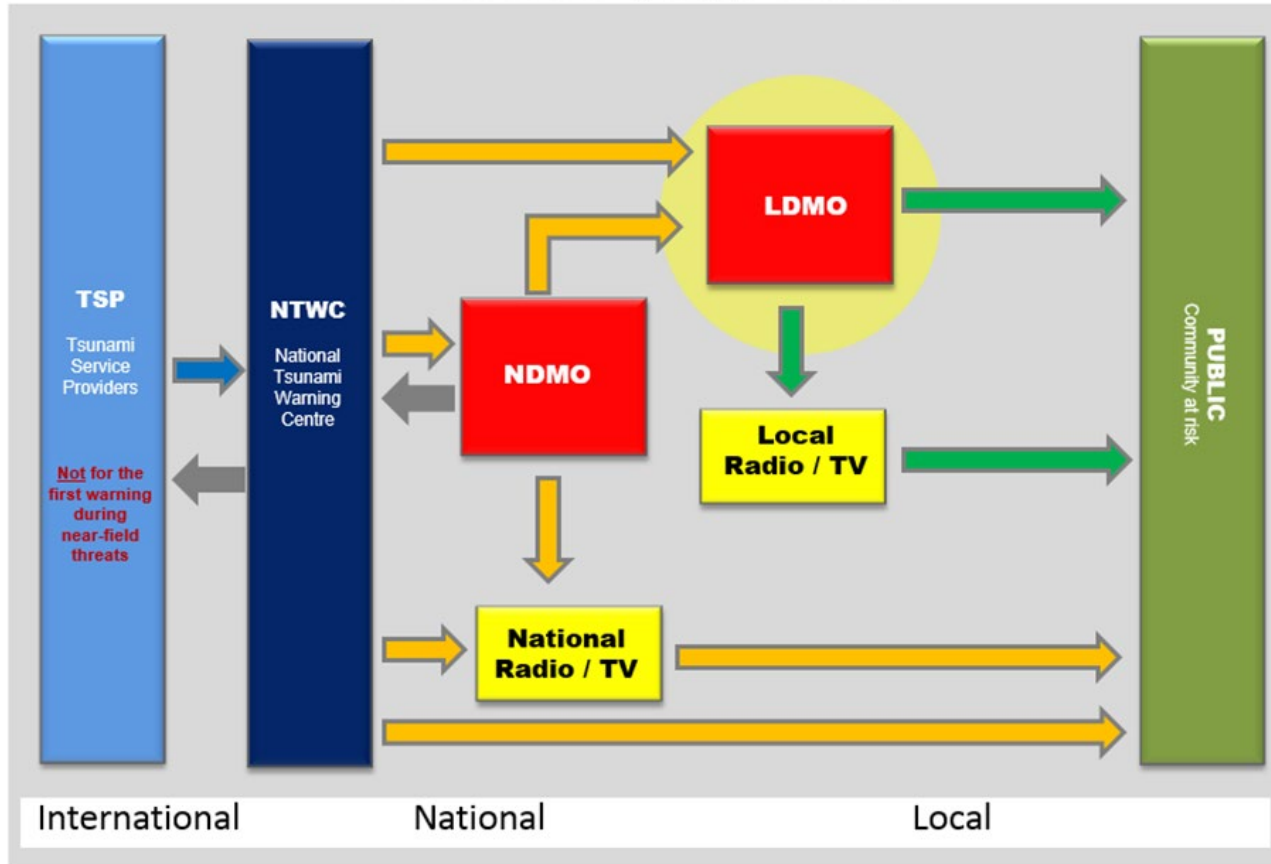
Harald Spahn



5 Min

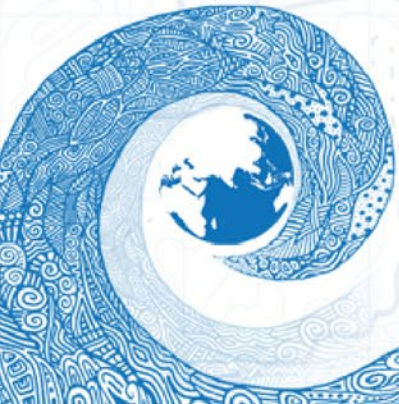
7 Min

Timeline for the first warning message (Minutes after EQ)



The importance and strengths of broadcasting Media in the Tsunami Early Warning Chain

- Can reach large parts of the population
- Can act quick (Breaking News), 24/7
- Reliable, recognized and trusted
- Skilled human resources
- Established infrastructure
- Familiar with (broadcasting) SOPs
- Can provide guidance
- Live Updates



Limitations & Challenges

- Possible power outage in disaster situations
- Remote areas with no (regular) power supply
- Not effective in night times when people are asleep and TV / Radio is off

