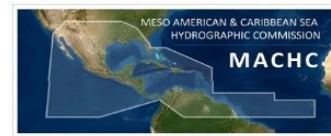


# Sixteenth Intergovernmental Session of the IOC Sub-Commission for the Caribbean and Adjacent Regions

## MACHC-IOCARIBE Seabed 2030 Project Work Plan for 2021

Ms. Cecilia Cortina (Mexico)  
MACHC Coordinator to Seabed 2030 Project



# MACHC – IOCARIBE Seabed 2030 Work Plan for 2021

## GOALS:

1. **Contribute Existing Non-Public Bathymetric Data to the IHO DCDB and GEBCO Grid**
2. **Increase data coverage**
3. **Build Capacity for mapping contributions**



United Nations  
Educational, Scientific and  
Cultural Organization



Intergovernmental  
Oceanographic  
Commission



## IOCARIBE XVI

Sixteenth Session of the IOC (of UNESCO) Sub-Commission  
for the Caribbean and Adjacent Regions



@IOCARIBEOCEAN

[iocaribe.ioc-unesco.org](http://iocaribe.ioc-unesco.org)

# GOAL 1 - Contribute Existing Non-Public Bathymetric Data to the IHO DCDB and GEBCO Grid

## ACTIONS FOR COASTAL STATES:

- Assemble information about existing non-public bathymetric data.
- Look at existing regulatory requirements, legislation, bilateral, contractual or other arrangements for surveying within national waters of jurisdiction to reassess what bathymetric data can be made publicly available.
- Contribute multibeam, single-beam and ENC data to the IHO DCDB.
- Contribute national bathymetric data products to the Seabed 2030 Project.
- Identify ways to promote or to support bathymetric data sharing.



United Nations  
Educational, Scientific and  
Cultural Organization



Intergovernmental  
Oceanographic  
Commission



IOCARIBE XVI

Sixteenth Session of the IOC (of UNESCO) Sub-Commission  
for the Caribbean and Adjacent Regions



@IOCARIBEOCEAN

[iocaribe.ioc-unesco.org](http://iocaribe.ioc-unesco.org)

# GOAL 2 - Increase data coverage

## ACTIONS FOR COASTAL STATES:

- Assemble information about upcoming surveys and data acquisition opportunities in national waters of jurisdiction.
- Explore with national authorities expanded permissions for opportunistic data acquisition via research and survey vessels during transits, consistent with national policy.
- Consider carrying Crowdsourced Bathymetry field trials in the region to provide data to the IHO DCDB.



United Nations  
Educational, Scientific and  
Cultural Organization



Intergovernmental  
Oceanographic  
Commission



IOCARIBE XVI

Sixteenth Session of the IOC (of UNESCO) Sub-Commission  
for the Caribbean and Adjacent Regions



@IOCARIBEOCEAN

[iocaribe.ioc-unesco.org](http://iocaribe.ioc-unesco.org)

# GOAL 3 - Build Capacity for mapping contributions

## ACTIONS FOR COASTAL STATES:

- Identify technical and other challenges to data collection, assembly and sharing and look for solutions.



United Nations  
Educational, Scientific and  
Cultural Organization



Intergovernmental  
Oceanographic  
Commission



## IOCARIBE XVI

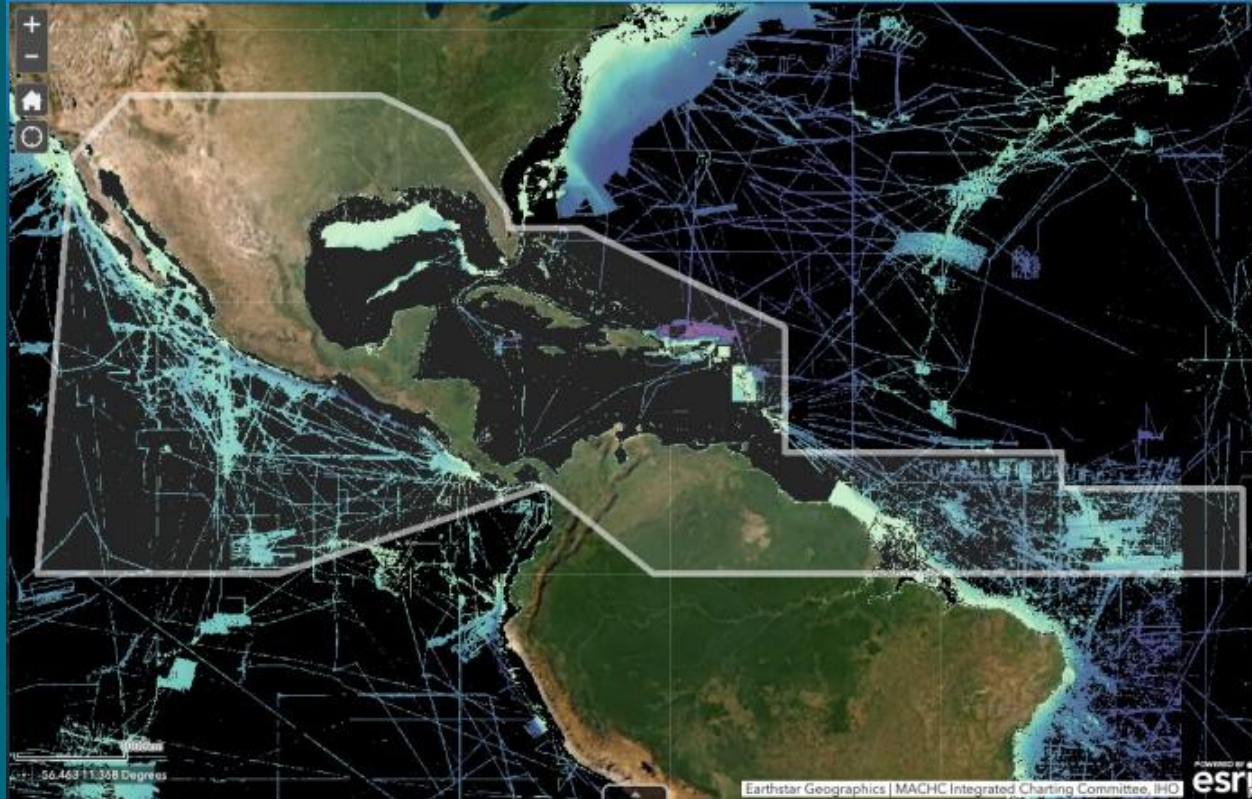
Sixteenth Session of the IOC (of UNESCO) Sub-Commission  
for the Caribbean and Adjacent Regions



@IOCARIBEOCEAN

[iocaribe.ioc-unesco.org](http://iocaribe.ioc-unesco.org)

# Status of Mapping in the Region: GEBCO 2020



## IOCARIBE XVI

Sixteenth Session of the IOC (of UNESCO) Sub-Commission  
for the Caribbean and Adjacent Regions



United Nations  
Educational, Scientific and  
Cultural Organization



Intergovernmental  
Oceanographic  
Commission

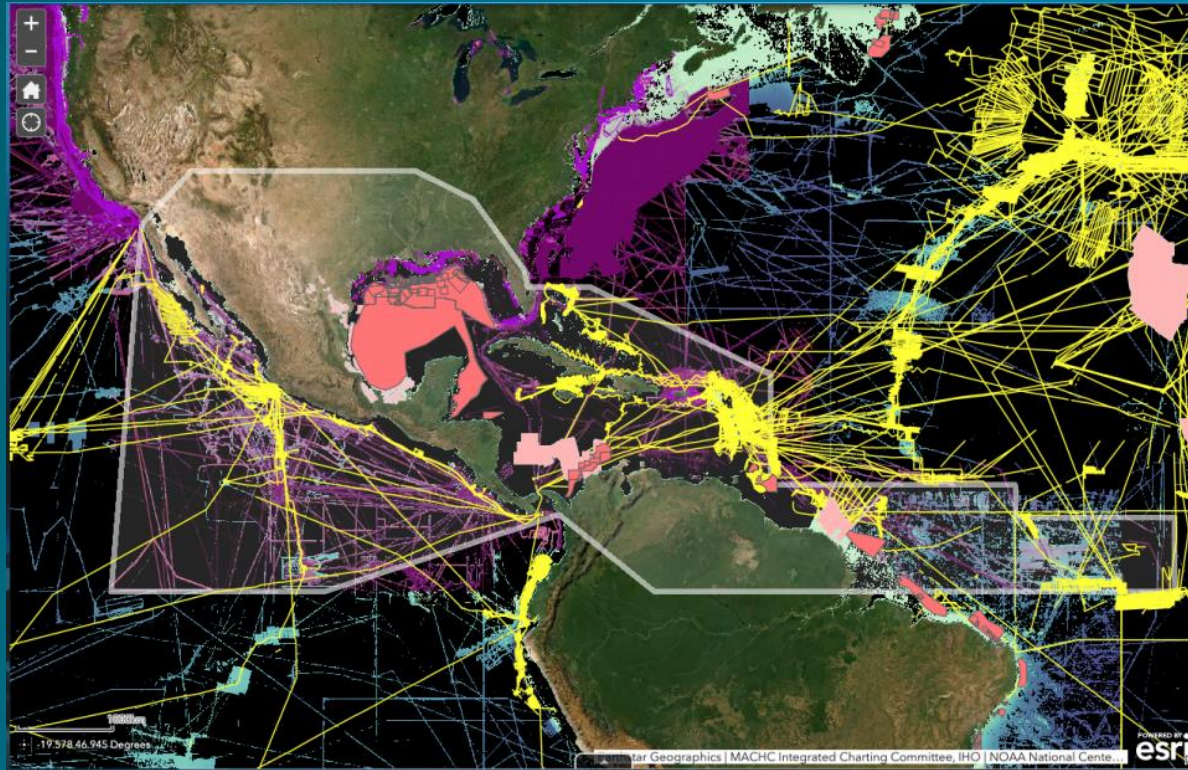


@IOCARIBEOCEAN

[iocaribe.ioc-unesco.org](http://iocaribe.ioc-unesco.org)



# MACHC Seabed 2030 Web App



<http://bit.ly/Seabed2030-MACHC>

## IOCARIBE XVI

Sixteenth Session of the IOC (of UNESCO) Sub-Commission  
for the Caribbean and Adjacent Regions



United Nations  
Educational, Scientific and  
Cultural Organization



Intergovernmental  
Oceanographic  
Commission



@IOCARIBEOCEAN

[iocaribe.ioc-unesco.org](http://iocaribe.ioc-unesco.org)

# How Can You Contribute ?

- Please explore the MACHC - Seabed 2030 Web App  
<http://bit.ly/Seabed2030-MACHC>
- Work closely with your National Maritime Administration and/or your National Hydrographic Office.
- Assemble information about technical challenges that we might be able to help you address.
- Send questions and correspondence to: [cecilia.cortina@gmail.com](mailto:cecilia.cortina@gmail.com)



United Nations  
Educational, Scientific and  
Cultural Organization



Intergovernmental  
Oceanographic  
Commission



IOCARIBE XVI

Sixteenth Session of the IOC (of UNESCO) Sub-Commission  
for the Caribbean and Adjacent Regions



@IOCARIBEOCEAN

[iocaribe.ioc-unesco.org](http://iocaribe.ioc-unesco.org)





## How to Contribute Data to the IHO DCDB

Contact [bathydata@iho.int](mailto:bathydata@iho.int) for more information on contributing data or sharing web services to the IHO DCDB.

Refer to [Submitting Marine Geophysical Data to the IHO DCDB](#) for how to package and submit data.

Governments, organizations, academia, industry and individuals are encouraged to contribute data to the IHO DCDB.

Bathymetric data and metadata can be submitted via File Transfer Protocol (FTP), email, or mail (hard drive) in the formats listed below.

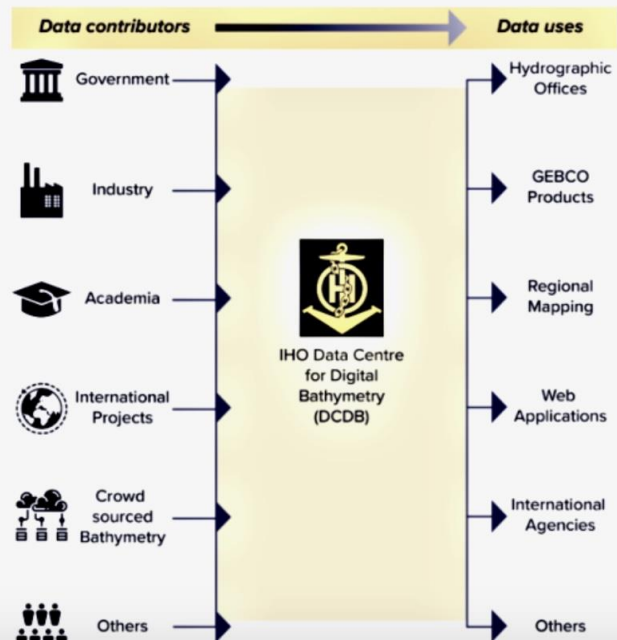
- **Raw sonar data:** MGD77T or the original manufacturer's format
- **Processed data:** gsf, BAG, NetCDF, tiff, xyz, sd, asc, etc.
- **Metadata:** XML or text

Other formats and products will be considered on a case-by-case basis.

Learn more about contributing [crowdsourced bathymetry](#).

IHO Member States are invited to provide sounding data extracted from their Electronic Navigational Charts (ENC). Only soundings from ENC cells in navigational purpose bands 2 and 3 are requested. For more information, please refer to [IHO Circular Letter 11/2016](#).

<https://www.ngdc.noaa.gov/iho/>





# Contributing Data



[Home](#) » [About](#) » [Contributing data](#)

## How to contribute data

Please use the form below to make contributions of multibeam and/ or single-beam survey data, individual soundings or existing grids to help update our gridded data sets and products. If you have any problems in completing the form, then please email this information to the Global Center ([gdacc@seabed2030.org](mailto:gdacc@seabed2030.org)).

### Jump to

- > [Our data contributors](#)
- > [Join the Crowdsourced Bathymetry initiative](#)

### Share this



## GEBCO Data Contribution Form

GEBCO's aim is to provide the most authoritative, publicly-available bathymetry of the world's oceans. It operates under the joint auspices of the International Hydrographic Organization (IHO) and the Intergovernmental Oceanographic Commission (IOC) (of UNESCO). GEBCO is continually working to improve its data products and gratefully acknowledges all data contributions to help map the gaps.

[https://www.gebco.net/about\\_us/contributing\\_data/](https://www.gebco.net/about_us/contributing_data/)

**GRACIAS**

**THANK YOU**

**MERCI BEAUCOP**