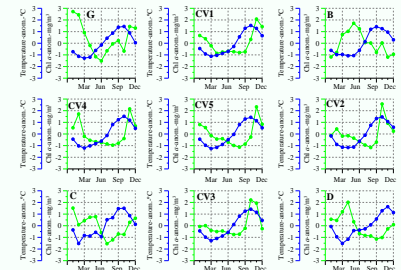
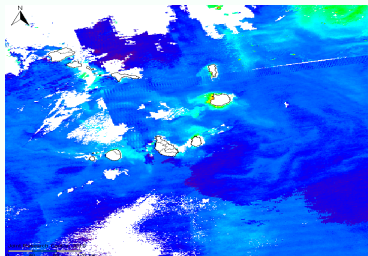


# OCEANOGRAPHICAL STUDY AND MODELING PELAGIC FISHING PRODUCTION AND PRIMARY PRODUCTION IN THE CABO VERDE REGION

*(Thesis project)*

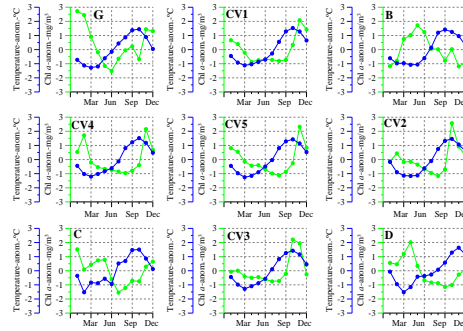
Vito Ramos – OSCM/IMar  
[vito.ramos@oscm.cv](mailto:vito.ramos@oscm.cv)

Doctoral Program in Oceanography and Marine Resource Management



## Background

- ✓ Many studies relationship between PP and availability of schools of fish
- ✓ Few studies conducted in CV
- ✓ For us is importante for the monitoring

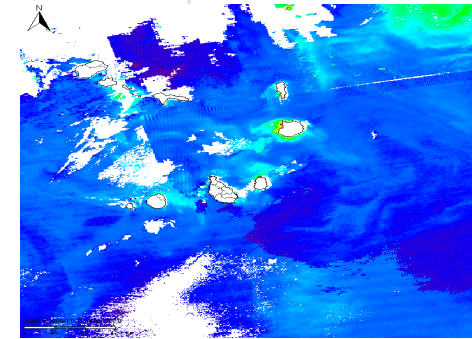


## Goals

- ✓ To make a parallel bet/ PP and palagic fishery production
- ✓ Seazonal and interannual variations of T, S, Chl and O

## Methodology

- ✓ RS data for synoptic vision
- ✓ Analyzes located in predefined squares – data from observations systems and from campaigns
- ✓ Databases of national and international institutions for Fishery Production



## Result

A parallel bet/ PP *et all* and Fishery Production in the Cabo Verde zone